



WaSim User Manual

This manual is an output of Project R6879, funded by DFID under the Knowledge and Research (KAR) Programme. The work was undertaken by HR Wallingford and Cranfield University (at Silsoe), with the active participation of the International Waterlogging and Research Institute (IWASRI), Pakistan.

The DFID KAR Project details are:

Theme:	W5 – Improved availability of water for sustainable food production and rural development.
Project title:	Aids to Improved Agricultural Development
Project No:	R6879

This document is an output from a project funded by the UK Department for International Development (DFID) for the benefit of developing countries. The views expressed are not necessarily those of DFID.

Authors; Chris Counsell (HR Wallingford)
Tim Hess (Cranfield University)

19 October 2000

HR Wallingford
Howbery Park
Wallingford
Oxfordshire
OX10 8BA
UK

Institute of Water and Environment
Cranfield University
Silsoe
Bedford
MK45 4DT
UK

<http://www.hrwallingford.co.uk/>

<http://www.silsoe.cranfield.ac.uk/>

© HR Wallingford, 2000

Visit: <http://www.hrwallingford.co.uk/projects/WASIM.html> or
<http://www.silsoe.cranfield.ac.uk/iwe/wasim/>

Contents

1.	Introduction.....	1
1.1	How to use this manual.....	1
1.2	Attributes	1
1.3	On-line help	2
2.	Main Screen.....	2
2.1	Menu / icons:	3
2.2	Status grid	3
2.3	Status bar.....	4
3.	User Levels/Access Permissions	4
3.1	Setting/clearing passwords.....	4
4.	WaSim Database.....	4
4.1	Crop / irrigation relationship.....	5
4.2	Record selection form	6
4.3	Sorting available records.....	6
4.4	Resizing columns	6
4.5	Viewing and editing a record.....	7
4.6	Define a new record.....	7
4.7	Deleting records.....	7
4.8	File operations.....	7
5.	Data Input.....	8
5.1	Common features	8
5.2	Soil data entry form	9
5.3	Drainage data entry form	11
5.4	Climate data import form.....	12
5.5	Crop data input form.....	19
5.6	Irrigation data input form.....	21
5.7	Initial run settings	26
6.	Simulation.....	28
6.1	Analysis options.....	28
6.2	Running a simulation	29
7.	Results Visualisation.....	33
7.1	Overview	33
7.2	Daily/Cumulative Results table	34
7.3	Seasonal/Annual/Monthly Summaries.....	37
7.4	Export Results As CSV.....	38
7.5	Plotting results	39
8.	Technical Issues	43
8.1	WaSim Specification	43
8.2	Year 2000 Compliance	44
	Acknowledgements.....	44

1. Introduction

WaSim is a computer-based training package for the teaching and demonstration of issues involved in irrigation, drainage and salinity. WaSim enables simulation of the soil/water/salinity relationships in response to different management strategies and environmental scenarios.

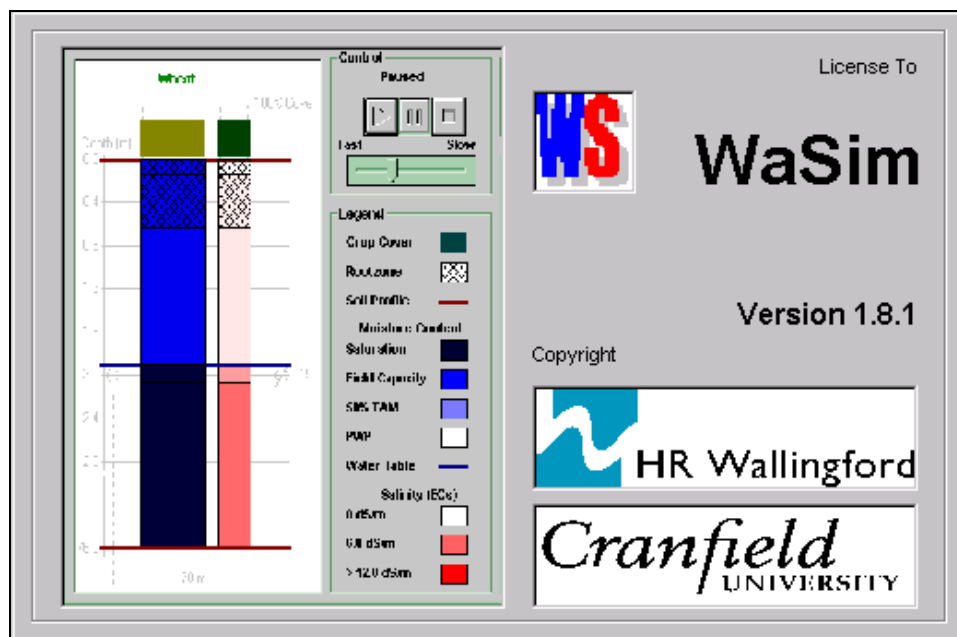


Fig. 1 The WaSim training package

1.1 How to use this manual

This user manual complements a Technical Manual, which sets out the theoretical bases for the program and a Tutorial Manual that leads you through a case study.

We suggest that you work through the Tutorial Manual first to get an overview of how the program works. The User Manual should then be used as a reference document. The Technical Manual contains details of the underlying assumptions in the model and equations used.

1.2 Attributes

- WaSim is principally aimed at simulating the effectiveness of sub-surface tile (pipe) drains.
- The simulation algorithm adopts a mass-balance approach, calculating results for a unit area of land at the mid-drain spacing. Calculated results include water contents and salt concentrations at different

points in the soil profile, along with drainage flows and water table depths.

- WaSim runs on a daily time-step using actual rainfall and reference evapotranspiration data (an associated WaSim-ET program is provided to calculate reference evapotranspiration from weather station data)
- Simulation runs of up to 30 years in duration can be undertaken
- A sequence of up to three crops in a cropping pattern (+ fallow) can be specified, with each crop season lasting up to 2 years
- Only single layered soils can be simulated
- WaSim can also be run as an unsaturated water balance simulation with irrigation, drainage/watertable and salinity options selected/deselected independently as required

1.3 On-line help

There is context-sensitive on-line help provided with the program which can be accessed by using the on-screen menus or *pressing <F1>* at any point.

2. Main Screen

From the main screen all the screens within WaSim can be accessed. The main screen has a number of features that are described below. The status grid and toolbar can be switched on/off via the *Options* sub-menu.

The icon buttons below the menu bar or the appropriate row of the status grid can be used as shortcuts to the data input screens.

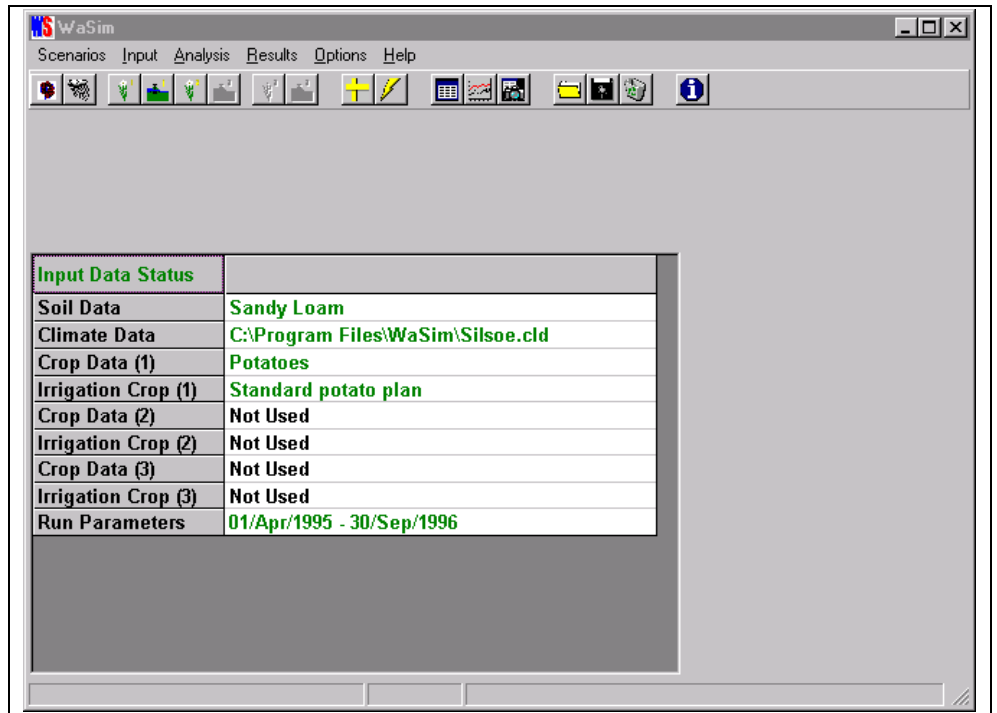


Fig. 2 WaSim main screen

2.1 Menu / icons:

A menu is provided at the top of the screen that provides links to all the input and output screens. The icons below the menu provide “shortcuts” to the screens. By holding the mouse cursor over an icon, an appropriate description (‘tooltip’) will appear.

Double-clicking the underlying bar can customise the toolbar itself, with buttons added, removed or repositioned as required.

2.2 Status grid

The status grid details the current state of the input data. If the top left cell, *Input Data Status*, is displayed in green a simulation can be undertaken. Otherwise, some of the input data need to be completed.

Each line of the status grid details the record or file selected for each of the required sets of input data. The dates of the simulation run, selected under the initial run settings, are displayed alongside *Run Parameters*. If data are missing or changes are required the corresponding line in the status grid will be displayed in red

The associated data input screen can be accessed directly by *clicking* the appropriate row of the status grid.

2.3 Status bar

The status bar at the bottom of the screen provides “progress” information during the importing/exporting of files, and when a simulation is undertaken without a graphical display - see Section 6.

3. User Levels/Access Permissions

WaSim can be set to operate at three levels, with each level allowing permissions as detailed below. A password may be required if previously specified.

User Level Access	Permissions
Full Access	Edit/Delete All Records, Create New Records, Access to Climate File Import Utility
Normal Access	Edit/Delete non-protected Records, Create New Records, Access to Climate File Import Utility
Restricted Access	Only View Records. No Access to Climate File Import Utility

Fig. 3 User level access descriptions

The password is stored in the Windows Registry. If the password is forgotten the user level cannot be changed.

3.1 Setting/clearing passwords

To set a password to prevent users from altering the user level, *click Set Password* in the operations mode screen (accessed from the *Options* menu item on the main screen). WaSim will request the new password twice to ensure no typing errors have been included.

To clear the password *click Clear Password* from the operations mode screen.

4. WaSim Database

WaSim uses a database to store created soil, drainage, crop, and irrigation records, along with allowing simulation run configurations, including the initial run settings, to be saved and recalled at a later date for subsequent simulations.

The database has a simple structure as shown below:

The WaSim database also enables model configurations (combinations of soil, drainage, climate, irrigation and initial run settings data) to be saved and reloaded when required.

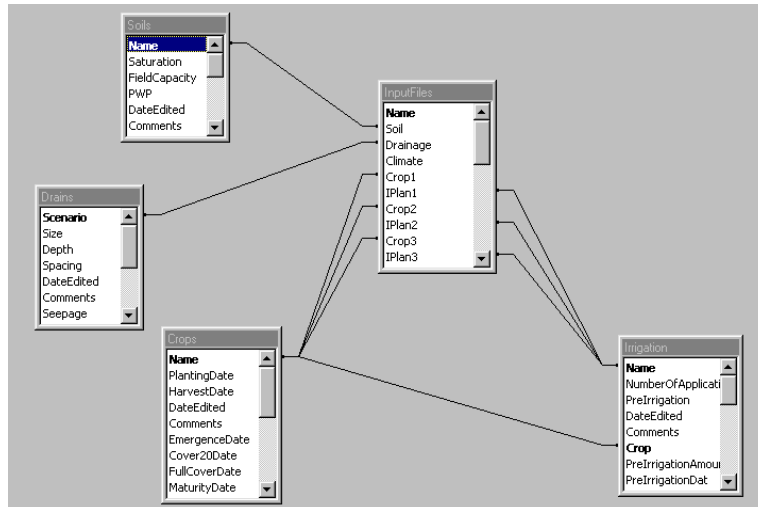


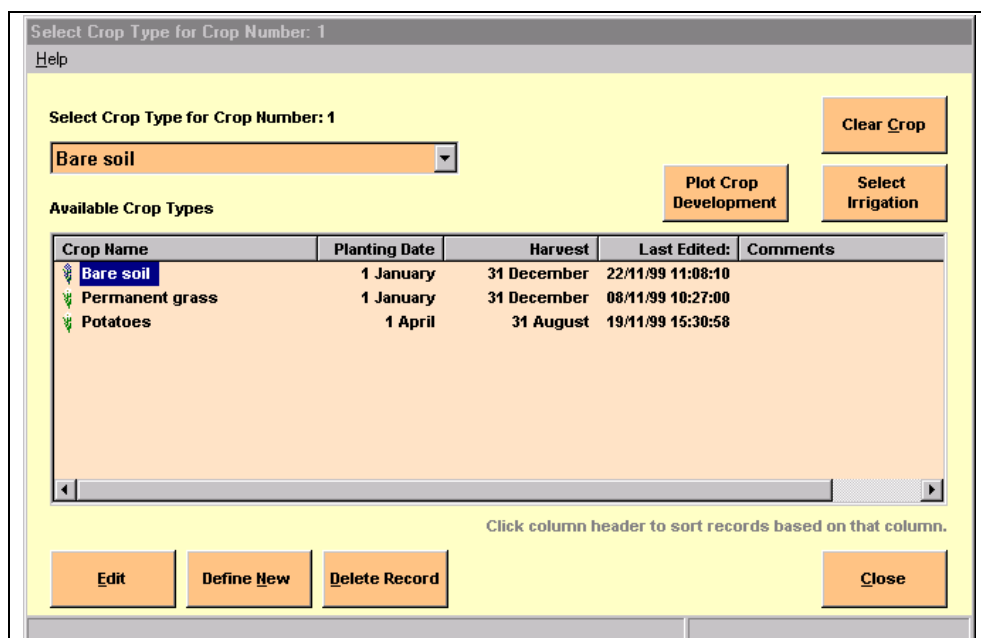
Fig. 4 Schematic diagram of the WaSim database

4.1 Crop / irrigation relationship

Each irrigation record is related to a crop through the crop's name. This allows a number of different irrigation schedules to be created and saved for each crop and selected as appropriate for different simulation runs. If a crop record is deleted, all associated irrigation records are also removed from the database.

4.2 Record selection form

The record selection screen is used to define and select specific crop, irrigation, drainage and soil records.



Crop Name	Planting Date	Harvest	Last Edited:	Comments
Bare soil	1 January	31 December	22/11/99 11:08:10	
Permanent grass	1 January	31 December	08/11/99 10:27:00	
Potatoes	1 April	31 August	19/11/99 15:30:58	

Fig. 5 Record selection screen

The record selection screen highlights the available records along with some key information about each record. When the irrigation records are displayed, only those irrigation schedules that have been defined for the currently selected crop will be displayed.

4.3 Sorting available records

To sort the records, simply click the column heading of the field by which you wish to sort the records. Records are sorted in ascending order.

4.4 Resizing columns

To enlarge (or reduce) column widths within the table, position the mouse at the right-edge of the column header of the column to be widened and *click and drag* the mouse horizontally to adjust the column to the required width.

4.5 Viewing and editing a record

Once a record has been selected, the data can be viewed/edited by *clicking* the **Edit** key or double-clicking the record name itself. This will lead to the appropriate data input form.

4.6 Define a new record

To define a new record, *click* **Define New Record**. The program will then prompt you for a name for your record, which must be unique, 20 characters or less and **not** contain the apostrophe character. After entering the name, the program will create the new record with default values and display the appropriate data input screen.

4.7 Deleting records

Records can be **permanently deleted** by firstly selecting the record to be deleted from the record selection screen and *clicking* the **Delete** key. There is no way of restoring any deleted records.

4.8 File operations

Simulation run configurations can be saved, loaded and deleted by using the appropriate option on the **File** sub-menu on the main screen.

4.8.1 Save Input File

WaSim allows model configurations to be saved and reloaded at a later date. At any stage during the setting-up of a simulation, the input status can be saved, including references to any selected soil, drainage, crop and irrigation records and climate files, along with any specified initial run settings.

To save an input file, select **Save Input Data** from the **File** sub-menu. The name for the input file will be requested, which must be unique and less than 20 characters.

4.8.2 Load Input File

To reload a previously saved model configuration, select **Load Input Data** from the **File** sub-menu. To load a file, *click* the file name in the table displayed, or select the appropriate name from the drop-down list box and *click* **Load Data**.

Deleting a crop record will also delete any associated irrigation schedules defined for that crop.

4.8.3 Delete file

To delete input file stored in the database, select the record to be deleted and *click **Delete***.

4.8.4 Clear Input Data

To remove any selected records previously selected, *click **Clear Input Data***.

5. Data Input

The required input data has been divided into 6 main areas, soil, drainage, climate, crop, irrigation and initial run settings, each with their own data input form.

5.1 Common features

The data input forms have common features, which are discussed below.

5.1.1 Comments

The *Comments* text box allows the user to include a description about the record. This information is stored in the database but is not used by the program. A description of up to 255 characters is allowed.

5.1.2 Last edited

The *Last Edited* date records the last time any changes were made to the record (or when the record was created). This is only included for user information.

5.1.3 Confirm

To confirm any changes made to the record *click **Confirm***. This will update the record within the database. Once completed, the original details cannot be restored.

5.1.4 Cancel changes

To abort any changes to the record *click **Cancel Changes*** and the original data will be maintained in the database.

To prevent overwriting an existing record a different name/scenario will need to be entered before clicking Save As on the data input screen.

5.1.5 Save as New record

To retain the original record and create a new record containing the new details, click **Save As New Record**. The original data and the new data will be recorded in the database as individual records.

5.1.6 Record/Scenario Name

The record (or scenario) name must be unique, less than 20 characters, and must **not** include the apostrophe character. This is the field by which the database organises and references each record.

5.2 Soil data entry form

5.2.1 Soil definition

The soil input form enables different soil types to be defined and saved within the database. Guidance values for parameters can be obtained by clicking **Help Values** from the Help Menu.

Note: multi-layered soils are not included within WaSim.

Fig. 6 Soil data input form

5.2.2 Drainage constant, τ ,

The Drainage Constant, τ , is used in the calculation of drainage when the water fraction volume is between Field capacity and Saturation. For further details refer to the Technical Manual (Section 6.1).

5.2.3 Curve number

The Curve Number is used in the calculation of surface run-off, and is adjusted during the simulation to take into account the relative saturation of the top layer of soil. The value entered is assumed to be the Curve Number for average antecedent moisture conditions.

5.2.4 Soil guidance values

Clicking **Help Values** from the soil input screen will display the table of help values shown below. These are for guidance only - refer to the Technical Manual for more information.

Texture Class	Water Fraction at			Drainage T
	Saturation	Field Capacity	Permanent Wilting t	
Sand	0.437	0.115	0.033	0.
Loamy Sand	0.437	0.168	0.055	0.
Sandy Loam	0.453	0.245	0.095	0.
Loam	0.463	0.279	0.117	0.
Silt Loam	0.501	0.324	0.133	0.
Sandy Clay Loam	0.398	0.241	0.148	0.
Clay Loam	0.464	0.321	0.197	0.
Silty Clay Loam	0.471	0.350	0.208	0.
Sandy Clay	0.430	0.311	0.239	0.
Silty Clay	0.479	0.371	0.250	0.
Clay	0.475	0.368	0.272	0.

See Manual for further information on these guideline values

Plot Water Fractions OK

Fig. 7 Soil guidance values

5.2.5 Typical hydraulic conductivity values

The table below lists typical values for hydraulic conductivity - for guidance only.

Soil Class	Range for Hydraulic Conductivity (m/d)
Coarse, Gravelly Sand	10 - 50
Medium Sand	1 - 5
Sandy Loam/Fine Sand	1 - 3
Loam/Clay Loam/Clay (well structured)	0.5 - 2.0
Very Fine Sandy Loam	0.2 - 0.5

Fig. 8 Typical hydraulic conductivity values - source Smedema & Rycroft, 1983

5.3 Drainage data entry form

Drainage data is only required if calculation of watertable position is to be included in the simulation (refer to Section 6 for more details).

5.3.1 Drainage dimensions

To specify that a drainage system is present ensure that the "Drainage system installed and operating" checkbox is checked. This activates the horizontal scroll bars that enable the drain depth, spacing and diameter to be specified. If this check box is not selected then the program assumes that there is **no drainage system** present or that it has been permanently closed.

The depth to the impermeable layer needs to be defined regardless of whether a drainage system is specified.

The drainage diameter is assumed to be the effective diameter (including the effects of envelopes etc).

Fig. 9 Drainage data screen

The Tubewell Extraction is assumed to be taken directly from the groundwater zone, with the salinity assumed to be equal to the salinity of the groundwater.

5.3.2 Tubewell extraction

If Tubewells are installed then a daily extraction rate, in mm/day, can be specified by selecting the "Tubewell Extraction" checkbox and adjusting the rate as required.

5.3.3 Canal seepage

If there is significant canal seepage present then this can be included by selecting the "Canal Seepage" checkbox and specifying the seepage rate, in mm/day, by adjusting the associated scroll bar.

Canal Seepage is applied to the groundwater zone below the depth of any drainage system present, with the salinity assumed to be equal to the salinity of the irrigation water.

5.4 Climate data import form

5.4.1 WaSim climate files (*.cld)

Before a simulation can be undertaken the climate data needs to be loaded into the program. WaSim uses specific WaSim climate files (*.cld) which can be saved and recalled at a later date.

The climate data is stored within climate files (.cld) and these can be saved for future use.*

WaSim incorporates a Climate Import Utility which enables text-based files (for example, with comma separated values) to be imported, validated and converted to the WaSim format. To launch the Climate Import Utility *click **Import*** from the ***File*** menu.

To load an existing WaSim format climate file (*.cld) *click* **Select New Climate File**.

Once loaded, the data can be displayed in a table and plotted by clicking **View Data** and **Plot** respectively.

5.4.2 Climate file import utility

The Import Utility can convert text-based files, such as comma separated values (*.csv) files into WaSim compatible climate files (*.cld).

WaSim requires both daily rainfall and reference evapotranspiration. Other data are ignored, both within the simulation and during the importing process.

Import Settings

Help

File Details

Data Start from Row	3	
Number of Columns	5	
Column Deliminator	<input checked="" type="radio"/> Comma	<input type="radio"/> Tab
Date Format	<input type="radio"/> Single Column	<input checked="" type="radio"/> Separate Columns

Location of Data

Date Column	1	
Day Column	1	
Month Column	2	
Year Column	3	
Evapotranspiration	5	
Rainfall	4	

Data Limits

Evapotranspiration	Maximum (mm)	20	
	Minimum (mm)	-2	
Rainfall	Maximum (mm)	500	

Cancel Changes Import File

Fig. 10 Climate import utility

A maximum file length of 30 years can be imported. Any files longer than this will be terminated at this point, and the data saved.

5.4.2.1 *File details*

Firstly, the import utility needs to be told the number of columns, the column delimiter (for *.csv files this will be a comma) and the row at which the data values themselves begin (not the column headers). Also the number of columns used to define the date (ie either a single column for the complete date or separate columns for day, month and year) also needs to be specified.

The second box is used to inform the utility which columns contain the required data, with the third box used to set allowable data limits. During the importing process, rainfall and reference evapotranspiration data exceeding these limits is highlighted.

5.4.2.2 *The Importing process*

The utility will highlight any errors or missing values within the data, and if a number of errors are encountered, it will offer the option of aborting the importing process. Missing values will be completed with 'zero' values, erroneous data will be highlighted and will need to be corrected using the File Editor component of the utility.

If any problems are encountered during this process please ensure the Import Settings are set correctly.

5.4.3 *Climate file editor*

Once the importing process has been completed, the data will be displayed within the File Editor within which any necessary editing can be undertaken.

Any erroneous values (data exceeding limits) will need to be corrected before the file can be exported as a WaSim climate file (*.cld) and used within a simulation.

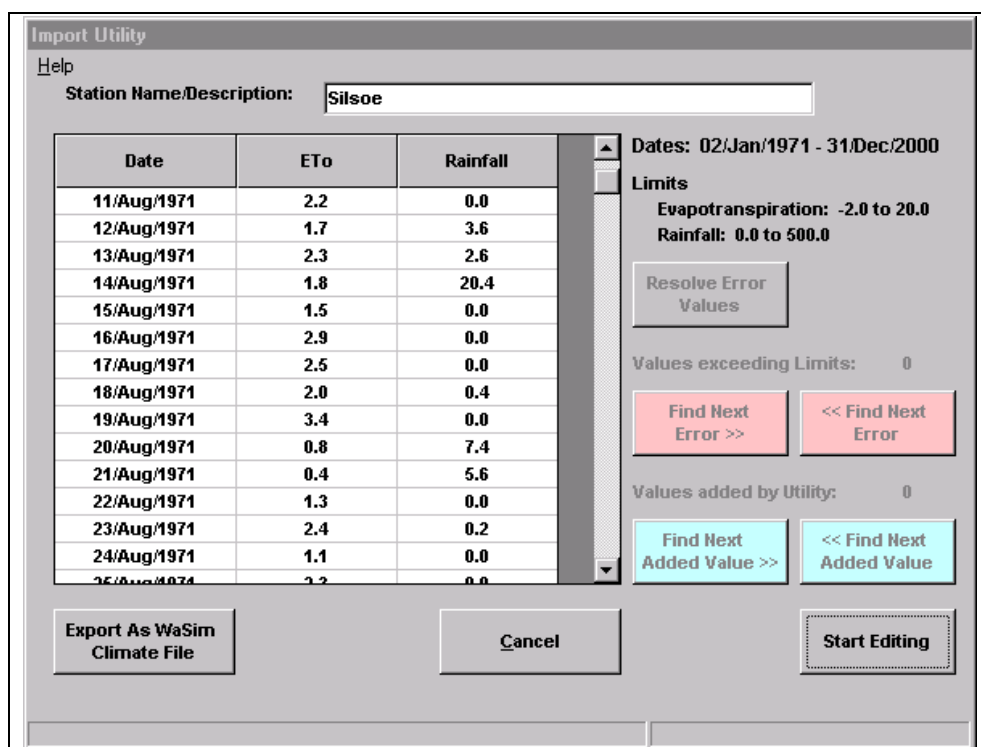


Fig. 11 Climate file editor

5.4.3.1 *Export as WaSim climate file*

Once any errors have been resolved, *click **Export as WaSim Climate File*** to make the data available for use within WaSim. Once this has been completed, the climate data screen will be displayed and the data can be viewed or plotted as necessary.

5.4.3.2 *Erroneous/missing data*

To the right of the table, the number of erroneous or missing values (added by the utility) is highlighted. Any erroneous values encountered during the importing process will be highlighted in red and any values supplemented (missing data encountered) will be highlighted in blue. To highlight each error in turn *click* the appropriate option (i.e. ***Find Next Error >>*** will search forwards through the data from its current location until it encounters the next erroneous value).

5.4.3.3 *Editing*

To begin editing the data, *click **Start Editing***. Use the key on the keyboard to remove characters from a cell and <ESCAPE> to leave the cell and restore the original value. Once the cell has been edited press <RETURN> on the keyboard to finish the editing. *Click **Stop Editing*** once all the changes necessary have been made. Corrected values will be shown in green.

5.4.3.4 *Resolve all errors*

To fix all the errors in one process *click **Resolve Error Values***, and the following options, highlighted in the picture below will be presented. Select the appropriate options, and corresponding replacement values and *click **OK***.

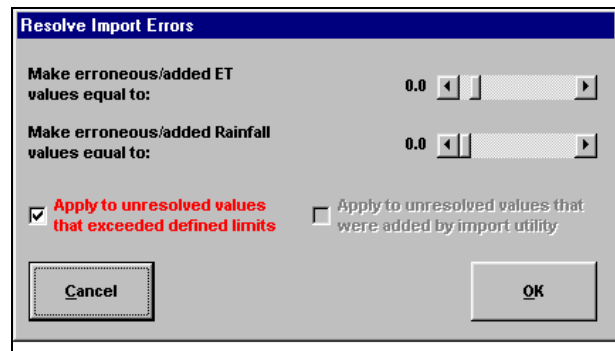


Fig. 12 Resolving import file errors

5.4.4 *View/plot climate data*

To view a WaSim climate data *click **View Data*** or ***Plot*** on the climate data screen to display a table and graph respectively.

Climate File

Help

Date	ETo	Rainfall
02/Apr/1989	0.9	6.4
03/Apr/1989	1.5	0.0
04/Apr/1989	2.2	8.9
05/Apr/1989	0.7	3.3
06/Apr/1989	0.7	6.5
07/Apr/1989	1.8	1.8
08/Apr/1989	1.6	0.0
09/Apr/1989	1.8	1.9
10/Apr/1989	1.5	1.2
11/Apr/1989	1.5	2.9
12/Apr/1989	1.9	5.1
13/Apr/1989	1.7	0.0
14/Apr/1989	2.1	0.0
15/Apr/1989	2.3	0.0
16/Apr/1989	1.1	1.8

Close

Fig. 13 Viewing imported climate data

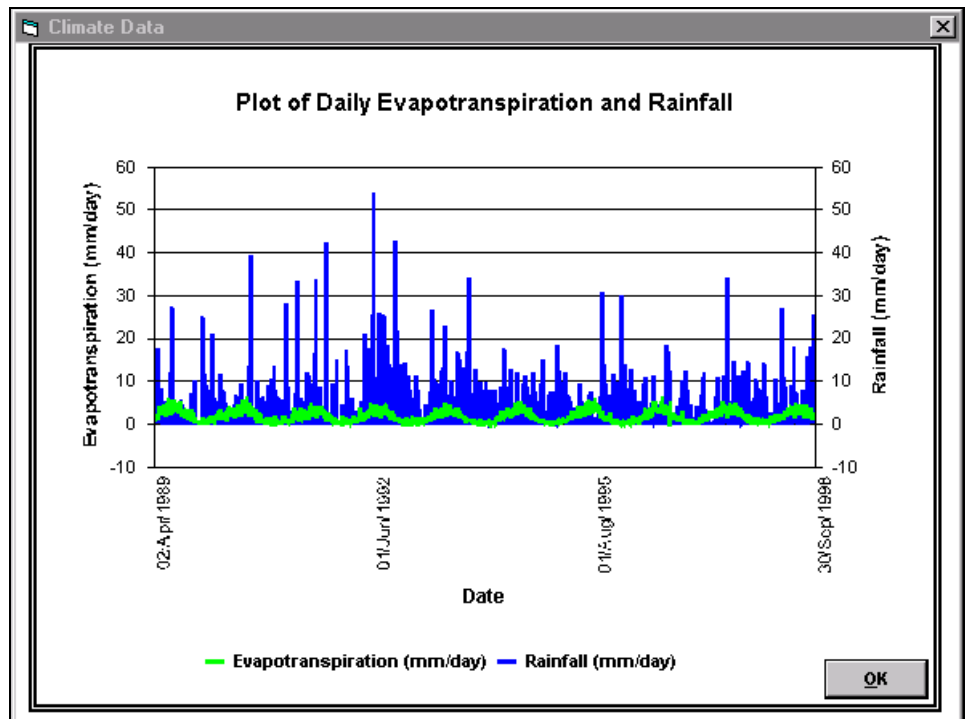


Fig. 14 Graph of imported climate data

5.5 Crop data input form

Fig. 15 Crop data input form

5.5.1 Crop Development

The crop canopy development is assumed to follow the following stages:

Period	Cover (%)
Planting to Emergence	0%
Emergence to Date of 20% Cover	Linearly increase from 0% to 20%
Date of 20% Cover to Date of Max Cover	Linearly increase from 20% to Maximum Cover
Date of Max Cover to Maturity	Maximum Cover
Maturity to Harvest	Linearly decrease from Maximum Cover to 0%

Fig. 16 Crop Development

The root development is assumed to increase from the Planting Depth to the Maximum Depth following a sinusoidal curve between the Planting Date and the Maximum Root Date.

5.5.2 Plot crop development

During the selection of a Crop type, the canopy and root development can be displayed by clicking **Plot Crop Development**.

The reduction from maturity to harvest is to simulate senescence.

The maximum cover must be greater than 20%.

Typically, the maximum root date corresponds with the date of maximum cover.

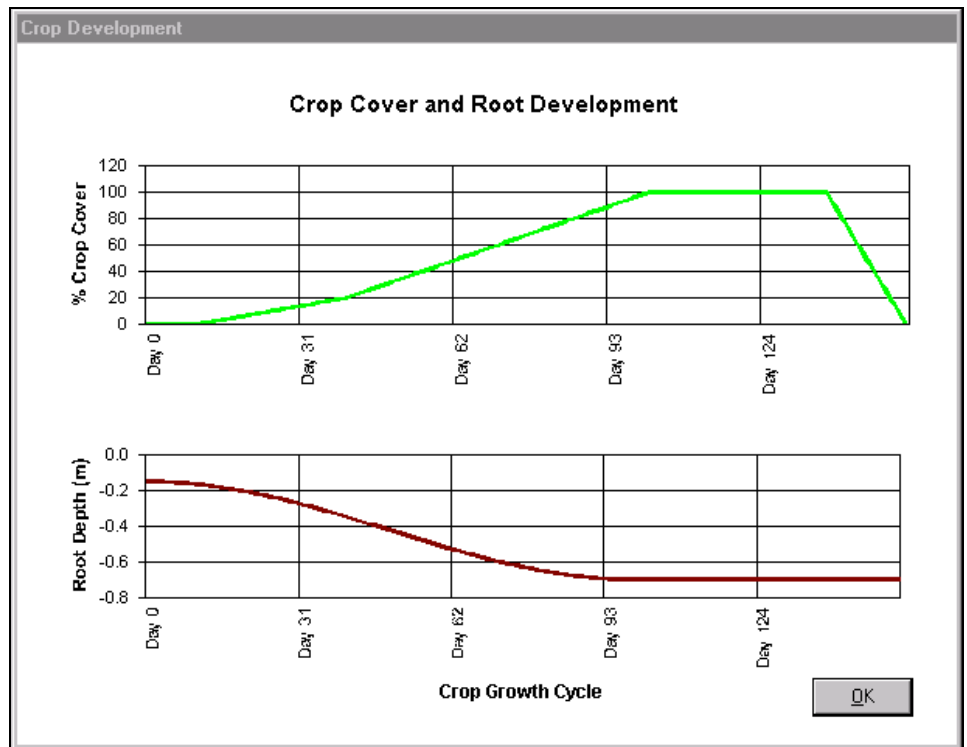


Fig. 17 A crop development plot

If crop 2 is removed and crop 3 is activated, WaSim will automatically update crop 3 to crop 2, along with any associated irrigation record

5.5.3 Remove a crop from Model Set-up

At least one crop must be defined before a model run can be undertaken. To remove any crops selected for crops 2 and 3 click **Remove Crop**. Any associated irrigation schedule will also be removed.

5.5.4 Mulch Cover

The fraction of ground covered by mulch can be specified. The crop cover is assumed to expand over the mulch.

5.5.5 Interception

Specifying an adjustment for interception enables losses from rainfall due to canopy interception to be included, and the effective rainfall (that which enters the soil) to be calculated (refer to Section 4.2, Technical Manual for more information). For example if it is to be assumed that the first 5 mm of any daily rainfall and 10% of subsequent rainfall is lost to interception then parameters a and b would be set to .9 and 5 respectively.

Interception losses to irrigation (in the case of sprinkler irrigation, for example) can be included with the formula defined within the irrigation screen (Section 5.6) used to calculate the effective irrigation application.

5.5.6 Tolerance to salinity

During a simulation the display will indicate days when the root zone salinity exceeds the salinity threshold of the current crop. Any values exceeding this threshold value are also highlighted within the results table (refer to Section 6).

5.5.7 Ponding

During a simulation a maximum ponding depth and a corresponding crop coefficient during ponding can be specified. If the crop transpiration is reduced during waterlogging then the *Reduce ET due to Excess Water* option box should be checked.

5.6 Irrigation data input form

The irrigation input screen enables irrigation schedules to be prepared. The top half of the screen (see Figure 18) has tabs that provide information about the crop, pre-irrigation, rainfall, salinity and controlled drainage.

The bottom half of the screen provides two procedures for defining of irrigation schedules, the Rule-Based Scheduling method and the Grid-Based Scheduling method.

Fig. 18 Rule-Based irrigation scheduling method

5.6.1 Crop data

A summary of the crop is displayed on the front tab of the top section of the screen.

5.6.2 Pre-Irrigation

Pre-irrigation can be defined on the second tab on the top section, and can be applied up to 30 days before planting. Three different options for calculating the amount to apply are available:

1. Fixed Amount
2. Fixed Wetting Depth
3. Target Salinity

The objective of the third option, *Target Salinity*, is to apply enough irrigation to bring the salinity back to the specified target value.

5.6.3 Rainfall / interception

The third tab enables Irrigation to be aborted if the rainfall exceeds a specified amount over a defined period. For example, irrigation could be suspended if the rainfall over the previous five days exceeds 50 mm. This tab also enables losses due to canopy interception (appropriate to sprinkler irrigation) to be included.

5.6.4 Water salinity and flow rate

The next tab enables the salinity of the irrigation water to be defined and, if *Rule-based* scheduling is adopted, enables an additional leaching requirement to be specified when a threshold salinity is reached. In this case, three options to increase the amount of irrigation for leaching purposes are available:

1. Increase by a fixed amount
2. Increase by a fixed percentage
3. Target Salinity

The objective of the third option, *Target Salinity*, is to apply enough irrigation to bring the salinity back to the specified target value.

If there is a limited water supply, the maximum flow rate can be fixed. This will limit any planned irrigation events that would exceed this rate.

5.6.5 Controlled drainage

The final tab allows simple controlled drainage options to be included. This option can be used if drainage has been installed and the drains are to be closed for a period during the crop season to maximise the contribution from groundwater.

5.6.6 Irrigation scheduling

Two procedures are available for defining irrigation schedules; Rule-Based Scheduling or Grid-Based Scheduling.

5.6.7 Rule-Based irrigation scheduling

Rule-Based scheduling (Figure 18) enables up to twelve combinations of frequencies and amounts of irrigation between selected dates. If any timing rule other than No Irrigation is selected then the amount rule options will become enabled.

Timing	Example
Fixed Interval	Every 10 days
Fixed Deficit (mm)	Irrigate at 50 mm Deficit
Fixed Depletion (%)	Irrigate at 50% TAM* Depletion
No Irrigation	No Irrigation
Irrigate at Deficit Below Saturation	Irrigate at 50 mm Deficit below Saturation
Irrigate at Fixed Ponding Depth	Irrigate at 10mm Ponding Depth

*TAM = Total Available Moisture in Rootzone

The start date of each Irrigation Scheduling Period is assumed to be the date at which the previous period is finished. In the case of the first period the start date is assumed to be the Crop Planting Date.

Fig. 19 Timing rules

Amount	Example
Fixed Amount	100mm
Return to Fixed Deficit (mm)	Return to 0mm Deficit
Return to Fixed Depletion (%)	Return to 0% Depletion
Return to Fixed Saturation Deficit	Return to 50 mm Saturation Deficit
Return to Fixed Ponding Depth	Return to 30 mm Ponding Depth

Fig. 20 Amount rules

5.6.7.1 Finish date

To complete an irrigation schedule period, the finish date needs to be specified. This date will also be used as the start date for the next period. The range of period start dates available is between the finish date of the previous period and the crop harvest date.

Scheduling periods can be added and removed by *clicking* the **Remove Period** button and all periods can be cleared by *clicking* **Clear All Schedules**. Additional periods are positioned at the end of the sequence, and if a period is removed all subsequent periods are updated accordingly.

Once removed, the details of the deleted period cannot be recovered.

To restore the irrigation record to the condition it was in before any changes were made, *click* **Cancel Changes**.

5.6.8 Grid Based irrigation scheduling

Grid based scheduling enables specific irrigation quantities to be applied on specific dates during the crop season. At the far right of the grid the total amount applied during the season is displayed.

Plot	Irrigation 1	Irrigation 2	Irrigation 3	Irrigation 4	Irrigation 5	Irrigation 6	Total (mm)
Day Number	11	31	51	71	91	111	
Amount	20	20	20	30	30	30	150

Fig. 21 Grid-Based irrigation scheduling method

5.6.8.1 *Editing the grid*

Any irrigation events specified within the grid can be manually edited by *clicking* the appropriate cell. Use the key on the keyboard to remove characters from a cell and <ESCAPE> to leave the cell and restore the original value. Once the cell has been edited *press* <RETURN> on the keyboard to finish the editing.

5.6.8.2 *Add irrigation*

To add an irrigation event adjust the *Day of Application* value to the appropriate day and *click Add Irrigation*. An irrigation event will be added to the grid and both the day and amount can be subsequently edited.

5.6.8.3 *Remove Irrigation*

To remove an irrigation event (or a range of irrigation events) highlight the irrigation(s) to be removed and *click Remove Irrigation*. Once completed there is no way to restore the applications.

To restore the irrigation record itself to the condition it was in before any changes were made, *click Cancel Changes*.

5.6.8.4 *Clear all irrigation events*

To remove all the irrigation events specified in the grid *click Clear All Irrigations*. There is no procedure for restoring these applications once they have been removed.

5.6.8.5 *Define schedule (complete grid)*

To complete the grid with a “Fixed Frequency-Fixed Amount” schedule *click Complete Grid*. This will display the Define Schedule screen, which will allow a frequency and associated fixed amount to be defined. The grid will then be filled with irrigation events derived from this schedule.

5.6.8.6 *Plot cumulative irrigation*

To plot the cumulative amount of irrigation applied through the season (including any pre-irrigation) *click Plot* at the top left of the grid.

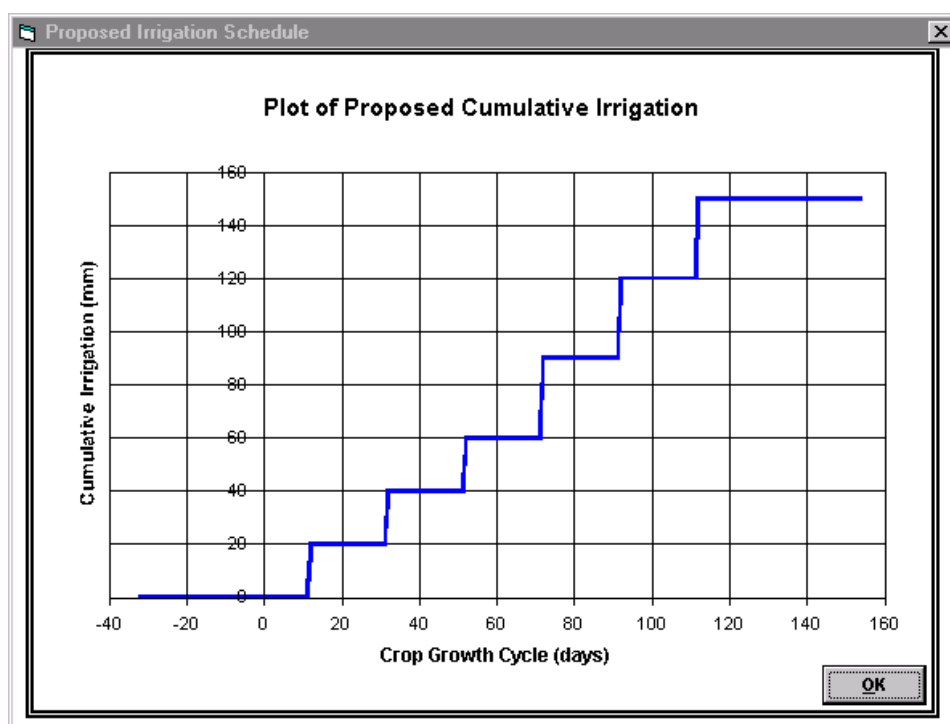


Fig. 22 Plot of cumulative irrigation

5.6.9 Irrigation Dates Conflict

If *Irrigation Dates Conflict* is indicated in the status grid (or detailed in a message box) after editing of a crop or irrigation record then there is a conflict between the specified crop and irrigation data.

This can occur when a new crop type is specified along with an irrigation plan. If the crop record is subsequently altered so that an irrigation event falls outside the crop season a conflict is created.

The error can be resolved by returning to either the crop or irrigation data screens and amending the record. On returning to the irrigation form WaSim can automatically remove any irrigation applications that fall outside the crop season.

5.7 Initial run settings

Once all the necessary input data (soil, drainage, climate, crop, and irrigation) have been specified, the initial run settings need to be specified. These include the start and finish dates of the simulation, the initial water moisture content and water table depth, and the initial salinity levels. Once these have been specified *click OK*. A simulation can now be undertaken.

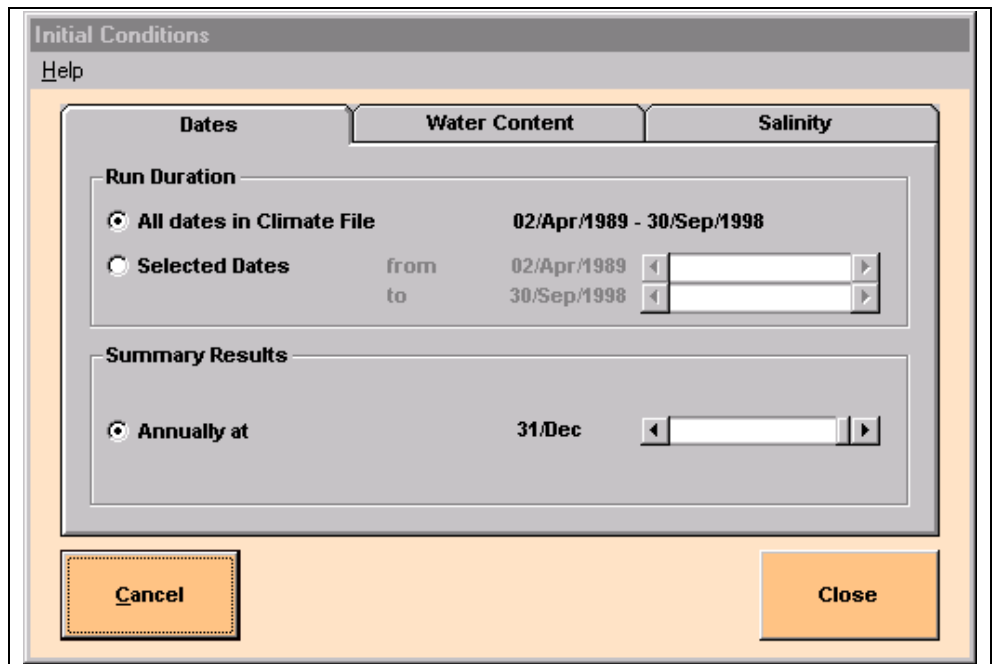


Fig. 23 Specifying the initial settings

5.7.1 Dates

The start and finish dates of the simulation run need to be within the date range of the climate data. The date at which annual summary results are calculated can be altered if necessary.

5.7.2 Water content

The initial moisture content can be specified by either setting all unsaturated compartments to Field Capacity, or by specifying a water content for each of the unsaturated layers individually by *clicking **Define Profiles***. If this option is selected, salt concentrations for each of the compartments can also be defined.

5.7.3 Salinity

If the initial moisture content of the unsaturated zones has been set at Field Capacity, the initial salinity in the root-zone, the saturated zone and the groundwater can be defined on the third tab. Otherwise, the initial salt concentrations should be entered by *clicking **Define Profiles*** on the second tab.

6. Simulation

6.1 Analysis options

WaSim can be configured to operate in a variety of different ways, with watertable, salinity and irrigation analyses optional. Also, with the watertable analysis option selected, WaSim can be run with or without a drainage system included. By switching all these options off, WaSim can be used as a simple unsaturated zone water balance model for calculation of potential recharge to a groundwater system.

WaSim can be used with or without the watertable, irrigation and salinity options activated

To change which analysis options are selected, *click **Operation Mode*** from the menu on the main screen. - a password may be required if previously specified.

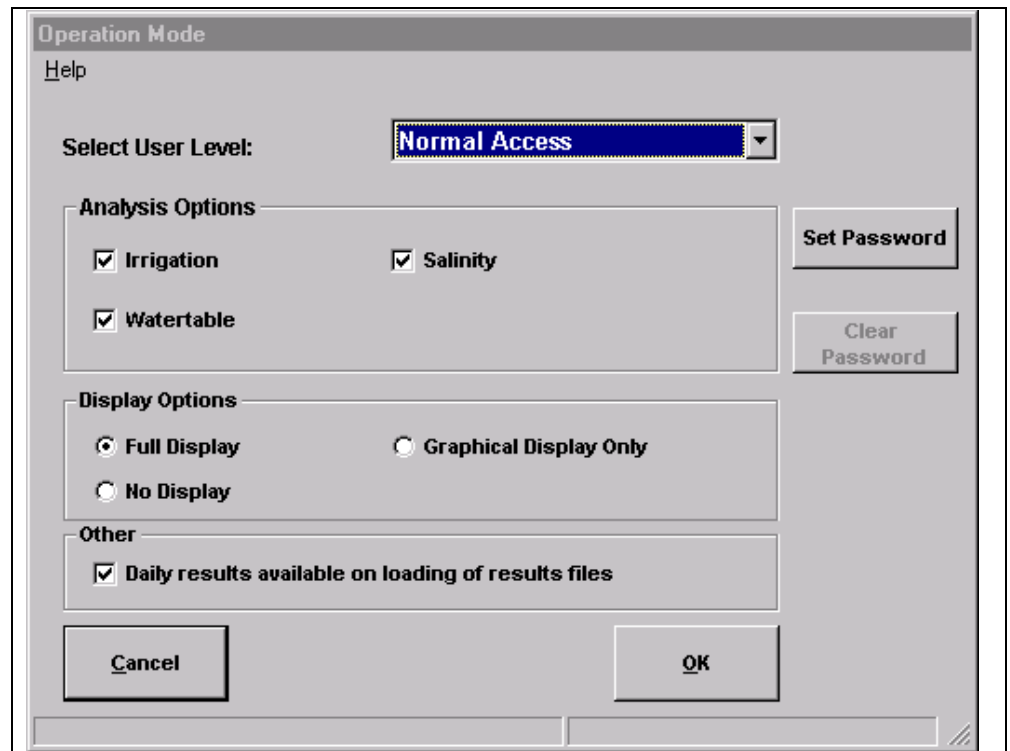


Fig. 24 Selecting the analysis options

When loading a results file, only those results with the same analysis option settings as currently selected can be loaded. WaSim will provide a warning and prevent a file with different analysis configurations from being loaded.

If a daily results record table is required, the ***Daily Results available on loading of results files*** option should be checked. If this option is left

unchecked, daily results can still be reviewed through the plotting facilities, or the daily results can be exported as a text file.

6.2 Running a simulation

WaSim enables a simulation run to be displayed in three different modes:

- 1) full display (Figure 25) with both a graphical representation and tabulation of daily results;
- 2) graphical display only (no tabulation);
- 3) with no display, (as a batch run). A progress bar on the main screen indicates the percentage of the simulation run that has been completed.

Simulations can be undertaken without using the display screen to speed up calculation

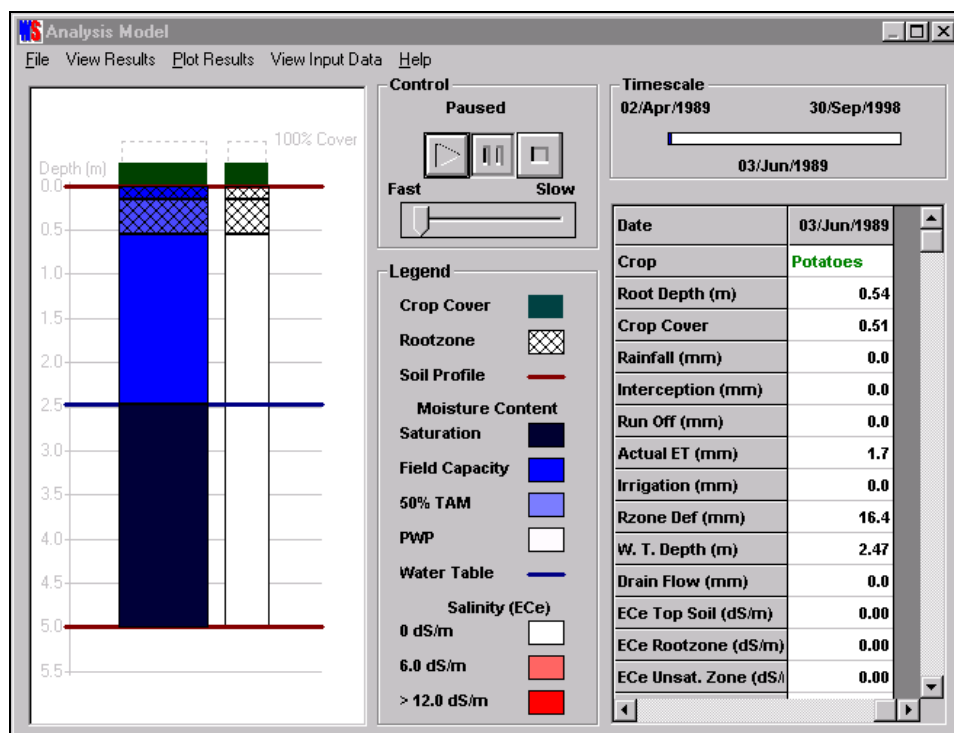


Fig. 25 A simulation using the full display - option (1)

These options allow a ‘trade-off’ between the level of detail/information displayed and performance speed during a simulation, although the algorithm used to calculate the results is the same in each case. If a graphical display is selected (options 1 and 2), the calculation speed can be adjusted as required on the display screen. To change the display option, click **Operation Mode** from the **Options** sub-menu of the main screen.

6.2.1 Starting a simulation

Once all the data have been input a simulation can be undertaken. To start a simulation run, *click Analysis >> Run* from the menu on the main screen. Alternatively, *click* the appropriate icon on the toolbar.

6.2.2 Control - starting/pausing/aborting simulations (Display Options 1 and 2)

To start the simulation, *click* the **Play** button on the display screen. At any time during the simulation, the analysis can be paused or aborted by *clicking* the **Pause** or **Stop** buttons. There is also a speed control provided, and this can be altered at any time to adjust the calculation speed.

Simulations can be paused or aborted at anytime, with the results analysed up to that point

6.2.3 Visual display and legend (display options 1 and 2)

The main visual display to the left of the screen highlights the key results. The light-grey background provides a depth-axis (in metres) and provides a visual summary of the drainage system.

6.2.3.1 Moisture and salinity profiles

The left-hand column (blue to white in colour) relates the moisture contents of the different soil profile zones (averaged over each zone) to the soil moisture holding properties (saturation, field capacity and permanent wilting point).

The right-hand column (red to white in colour) indicates the average salt concentrations (electrical conductivity of the saturation extract) in each zone.

6.2.3.1.1 Crop development and crop stress

Above both columns, an indication of the crop cover development is provided. An indication of the root development is also shown using a hatched area below the soil surface. During the season, the colour of the crop cover above either column may change to indicate potential moisture or salinity stress. These details are summarised in the associated legend.

The darker the blue, the wetter the soil. The darker the red, the higher the salinity. Crop stress will be indicated by a yellowing of the crop cover.






Indicator	Column	Explanation
	Both	No stress
	Moisture	Water Content in rootzone limiting crop transpiration (to between 50 and 100% of potential)
	Moisture	Water Content in rootzone limiting crop transpiration (to between 0 and 50% of potential)
	Salinity	Salt Content in rootzone limiting crop transpiration (to between 50 and 100% of potential)
	Salinity	Salt Content in rootzone limiting crop transpiration (to between 0 and 50% of potential)

Fig. 26 Interpreting different crop cover colours

6.2.3.2 Soil profile/watertable

The extent of the soil profile is represented by horizontal brown lines, with the water table indicated by a horizontal blue line across both columns.

6.2.4 Timescale (Display Options 1 and 2)

The timescale details the start and finish dates of the simulation and the current date of the simulation.

6.2.5 Results table (Display Option 1 only):

The results table displays a user-selected range of daily results, with the latest date shown at the far right of the grid. To view earlier results, **Pause** the simulation and use the scroll bar at the bottom of the table to move to the required date.

Right-clicking a row in the results table produces a graph of that row of results

To change which results are displayed, **Pause** the simulation and then select/de-select the appropriate option from the **View Results** sub-menu.

6.2.6 Plot Results to date (Display Options 1 and 2):

Whilst the simulation is paused, any of the calculated results can be plotted up to the current date of the simulation by *right-clicking* the appropriate row of the results table. This can also be done, by ensuring the currently selected cell within the grid is in the row to be plotted and *clicking Plot Results* from the menu.

6.2.7 View Input Data (Display Options 1 and 2):

To view the soil, drainage, crop or irrigation input data, **Pause** the simulation, and then select the appropriate option from the **View Input Data** section of the menu.

6.2.8 Saving and reloading of results:

Once a simulation has been completed, the option to save the results will be presented - note the results are not automatically saved or stored in memory after a simulation has been run.

To review the results they will need to be saved and then loaded into memory. To load a results file, select **Load Results File** from the **Results** menu on the main screen, and use the file browser to locate the file. Once loaded, the results can be displayed in tables (including summary results) or plotted as required. Up to 5 sets of results can be stored in memory at any time to enable results of different simulations to be compared.

7. Results Visualisation

7.1 Overview

WaSim incorporates an extensive results visualisation engine to enable the output from simulations to be displayed, evaluated and compared. The results from up to 5 simulations can be loaded into memory at any one time. The results can be displayed in tables, plotted in charts and summarised (by month, year or season) as required.

The results that can be displayed are shown below:

Results	Daily Values	Cumulative	Max/Min/Ave	Total	Monthly/Annual/Seasonal
Crop Cover	Yes	No	Yes	No	No
Crop Root Depth	Yes	No	Yes	No	No
Rootzone Deficit	Yes	No	Yes	No	No
Irrigation	Yes	Yes	Yes	Yes	Yes
Actual Rainfall	Yes	Yes	Yes	Yes	Yes
Crop Evapotranspiration	Yes	Yes	Yes	Yes	Yes
Run-Off	Yes	Yes	Yes	Yes	Yes
Interception	Yes	Yes	Yes	Yes	No
Water Table Depth	Yes	No	Yes	No	Yes (Max and Min)
Drainflow	Yes	Yes	Yes	Yes	Yes
Drainwater Salinity	Yes	No	Yes	No	Yes (Max & Min)
Water Fraction - All Zones	Yes	No	Yes	No	No
Water Content - All Zones	Yes	No	Yes	No	No
Electrical Conductivity of Saturation Extract (Unsaturated Zones)	Yes	No	Yes	No	Yes (Max & Min, Rootzone only)
Electrical Conductivity (All Zones)	Yes	No	Yes	No	No
Relative Transpiration	No	No	No	No	Yes

Fig. 27 Summary of results calculated

The results can be presented in the following tables:

- Daily Values (all results) between user-selected dates
- Daily Cumulative Values (where appropriate) between user selected dates
- Maximum, Minimum, Average and Total values (where appropriate) between user-selected dates

- Monthly, Annual, and Seasonal Summaries over the time-period of the simulation

In each case, a combination of output parameters can be plotted on a chart, with up to 5 result files displayed at any one time. This enables different strategies and scenarios to be readily compared. Previously saved simulation results can be reloaded at a later date for comparison.

The results can also be exported as comma separated values (*.csv files) to allow further manipulation and analysis within an external spreadsheet package or text editor.

7.2 Daily/Cumulative Results table

The calculated daily results can be viewed by *clicking Results >> View Results* (or the appropriate icon on the toolbar) from the main screen. A list of currently loaded results will be displayed and the appropriate results file can be selected by *clicking* the appropriate row of the table and *clicking* the *View* button.

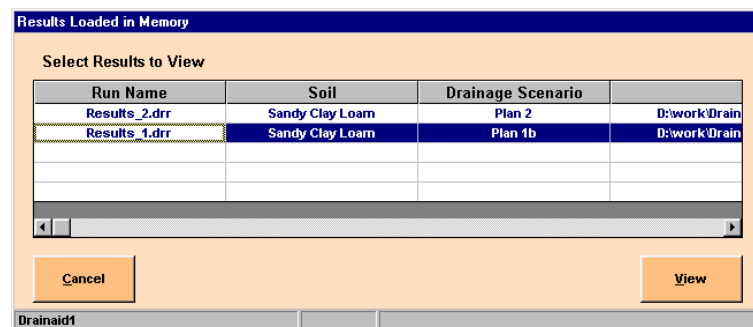


Fig. 28 Results files currently in memory

The title box above the results table (see Figure 29) displays the simulation file name and the range of dates currently on display.

Results Table - (TIM.drr)
View Complete Results File Start/Finish Dates Summary Data Cumulative Results Help

Table of Results for TIM.drr (02/Apr/1989 - 30/Sep/1998)

Date	Crop	Root Depth (m)	Crop Cover	Rainfall (mm)	Interception (mm)	Run
02/Apr/1989	Potatoes	0.15	0.00	6.4	0.0	
03/Apr/1989	Potatoes	0.16	0.00	0.0	0.0	
04/Apr/1989	Potatoes	0.16	0.00	8.9	0.0	
05/Apr/1989	Potatoes	0.16	0.00	3.3	0.0	
06/Apr/1989	Potatoes	0.16	0.00	6.5	0.0	
07/Apr/1989	Potatoes	0.16	0.00	1.8	0.0	
08/Apr/1989	Potatoes	0.17	0.00	0.0	0.0	
09/Apr/1989	Potatoes	0.17	0.00	1.9	0.0	
10/Apr/1989	Potatoes	0.17	0.00	1.2	0.0	
11/Apr/1989	Potatoes	0.17	0.01	2.9	0.0	
12/Apr/1989	Potatoes	0.18	0.01	5.1	0.0	
13/Apr/1989	Potatoes	0.18	0.02	0.0	0.0	
14/Apr/1989	Potatoes	0.19	0.03	0.0	0.0	
15/Apr/1989	Potatoes	0.19	0.03	0.0	0.0	

View Summary Close

Fig. 29 Results table

Other results files that are currently loaded into memory can also be displayed by returning to the results files list (Figure 28) and reselecting another file to display.

7.2.1 Change displayed Result Columns/Hide Column

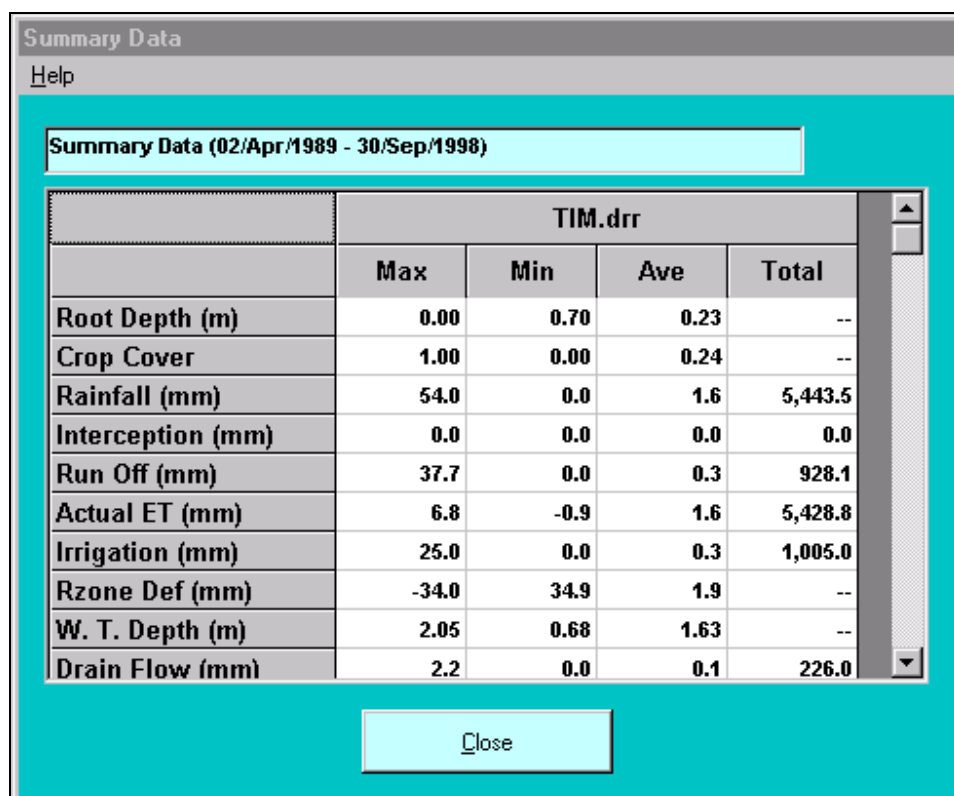
The user can toggle which results to display within the table. For example to toggle between hiding and showing the Irrigation column, *click View Complete Results File >> Irrigation* from the menu. Alternatively, to hide a column, highlight the column(s) to be hidden, *right-click* the mouse button and *select Hide Column* from the pop-up menu that appears. To redisplay the column, *click View Complete Results File >> Irrigation* from the menu.

7.2.2 Change Date Range

To change the dates between which the results are displayed, *click Start/Finish Dates >> Change Date Range* from the menu and the screen will display the change dates screen. Once the dates have been changed, *click OK* and WaSim will update the table. To view the complete results file, *click Start/Finish Dates >> Select All Results* from the menu.

7.2.3 View Summary Data

To view a summary (maximum, minimum, average and, where appropriate, total) of the currently displayed results, *click Summary Data >> View Summary Data (Selected Results)*. To view a summary of the whole simulation *click Summary Data >> View Summary Data (All Results)*.



Summary Data

Help

Summary Data (02/Apr/1989 - 30/Sep/1998)

	TIM.drr			
	Max	Min	Ave	Total
Root Depth (m)	0.00	0.70	0.23	--
Crop Cover	1.00	0.00	0.24	--
Rainfall (mm)	54.0	0.0	1.6	5,443.5
Interception (mm)	0.0	0.0	0.0	0.0
Run Off (mm)	37.7	0.0	0.3	928.1
Actual ET (mm)	6.8	-0.9	1.6	5,428.8
Irrigation (mm)	25.0	0.0	0.3	1,005.0
Rzone Def (mm)	-34.0	34.9	1.9	--
W. T. Depth (m)	2.05	0.68	1.63	--
Drain Flow (mm)	2.2	0.0	0.1	226.0

Close

Fig. 30 Summary of daily results

7.2.4 Cumulative Results

To view cumulative daily results rather than actual daily values, *click Cumulative Results >> View Cumulative Results* from the menu. To return to daily values *click Daily Values >> View Daily Results*.

7.2.5 Plot Column

To plot a column of results, *right-click* the appropriate column and *select Plot Column* from the pop-up menu displayed. Once plotted, the same parameter for any other loaded results file can also be displayed using the menu provided within the plot screen.

7.3 Seasonal/Annual/Monthly Summaries

WaSim enables the calculated results to be summarised either by crop season, by year and by month. To view the results in this form, *click Results >> View Summary Results* (or the appropriate icon on the toolbar) from the menu of the main screen. A list of loaded results files (Figure 27) will be displayed and the appropriate results file can be selected by *clicking* the appropriate row of the table and *clicking* the appropriate summary (annual/monthly/seasonal) button from those available.

Monthly Summary Data [02/Apr/1989 - 30/Sep/1998 - (TIM.drr)]

Edit Help

Results File: TIM.drr

Date		Total (mm)				Maximum	Minimum	Maximum
From	To	Rainfall	Irrigation	Run-off	DrainFlow	W.T. Depth (m)		ECs Ro
Apr/1989	Apr/1989	72.8	0.0	7.1	0.0	1.01	1.00	0
May/1989	May/1989	13.0	0.0	0.5	0.0	1.41	1.00	0
Jun/1989	Jun/1989	32.6	30.0	3.3	0.0	1.67	1.42	0
Jul/1989	Jul/1989	46.2	50.0	16.3	0.0	1.88	1.68	0
Aug/1989	Aug/1989	19.9	100.0	0.4	0.0	1.97	1.88	0
Sep/1989	Sep/1989	11.0	0.0	0.0	0.0	1.98	1.97	0
Oct/1989	Oct/1989	33.0	0.0	0.4	0.0	2.00	1.98	0
Nov/1989	Nov/1989	23.0	0.0	1.8	0.0	2.00	2.00	0
Dec/1989	Dec/1989	144.0	0.0	53.1	0.0	2.00	1.82	0
Jan/1990	Jan/1990	58.2	0.0	3.2	0.0	1.81	1.54	0
Feb/1990	Feb/1990	79.8	0.0	14.2	0.0	1.53	1.19	0
Mar/1990	Mar/1990	15.2	0.0	1.6	0.0	1.26	1.16	0
Apr/1990	Apr/1990	26.0	0.0	0.4	0.0	1.30	1.25	0
May/1990	May/1990	2.8	0.0	0.0	0.0	1.57	1.32	0
Jun/1990	Jun/1990	35.2	15.0	0.5	0.0	1.77	1.58	0

Close

Fig. 31 Seasonal Summary

To access plotting and, in the case of Seasonal Summaries, further summary data, *right-click* a cell to display the following options, where appropriate:

7.3.1 Plot Series

The results within any column can be plotted as a series, with the option of including any other results currently loaded into memory that have the same start and finish dates.

7.3.2 Plot Season/Year/Month

The actual change in a parameter through the course of the summarised season/year/month can be plotted, with the option of including any other

results currently loaded into memory that have the same start and finish dates.

7.3.3 View Further Summary Information

Within Seasonal summaries, further information can be obtained by accessing the *Further Summary Info* option from the pop-up menu.

Season Water Table and Rootzone Salinity Information	
Rootzone Salinity	
Season Info	
Maximum Root Depth	1.00
Water Table Depth at Planting (m)	1.71
Water Table Depth at Harvest (m)	1.97
Date of Minimum Water Table Depth	03/Feb/1966
Minimum Water Table Depth (m)	1.63
Close	

Fig. 32 Detailed seasonal summary info

This additional summary information details the watertable depth at planting and harvest, along with the date and depth of the shallowest water table depth recorded during the season. Also, the rootzone salinity at planting and harvest, along with the date and value of the maximum salinity during the season, is presented.

7.3.4 Relative transpiration (yield indicator)

Within the summary screens, a summary for the seasonal crop transpiration is calculated, and provides an indication of the magnitude of any moisture and salinity stresses present during the season. This information provides an indication of potential effects on crop yield.

7.3.5 Cumulative irrigation

The cumulative irrigation values recorded within seasonal summaries do NOT include any pre-irrigation applied prior to planting of the crop.

7.4 Export Results As CSV

To export a set of results currently loaded into memory *click Results >> Export Results As CSV File* (or the appropriate icon on the toolbar) from

the main screen. A list of currently loaded result files will be displayed and the appropriate results file can be selected by *clicking* the appropriate row of the table and *clicking* the **Export Results** button. The results will be exported as a comma separated values (*.csv) file which can be imported into any spreadsheet or text editor.

The exported results also contain information regarding the input data and the initial starting conditions specified for the simulation.

7.5 Plotting results

WaSim incorporates comprehensive charting capability, enabling the user to produce a variety of user-defined charts. The user can select any of the calculated results displayed in the result tables, and plot up to three series at once from up to 5 sets of results. The user can also plot maximum, minimum, average and total values for each result (where meaningful) and also plot cumulative results. All of these charts can be plotted over a user-defined range of dates.

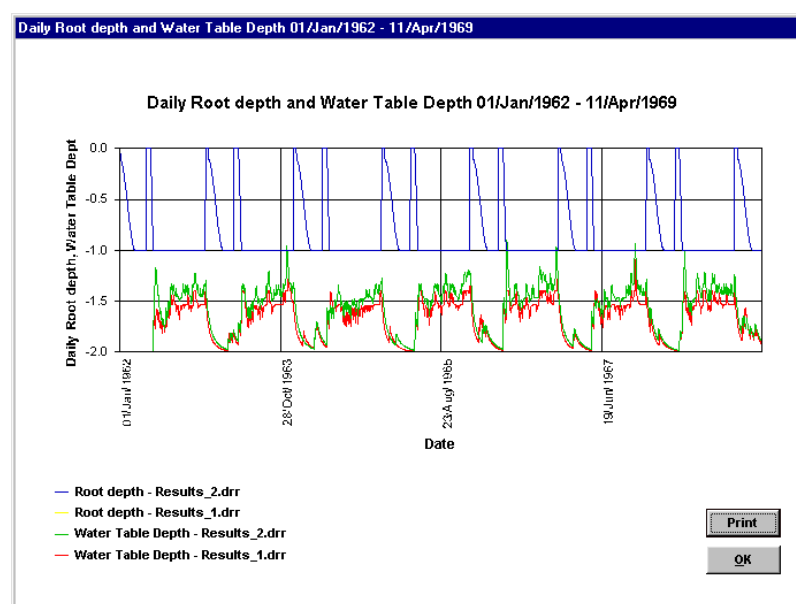


Fig. 33 Example plot

WaSim enables the charts to be “cut-and-paste” into a word-processing package (for inclusion in a report) or plotted to a printer. Direct “cut-and-paste” of the underlying data to a spreadsheet package for further manipulation and analysis is also possible. The individual chart elements can be repositioned/resized as required.

The type of chart to be displayed is determined by the setting of the various options displayed below:

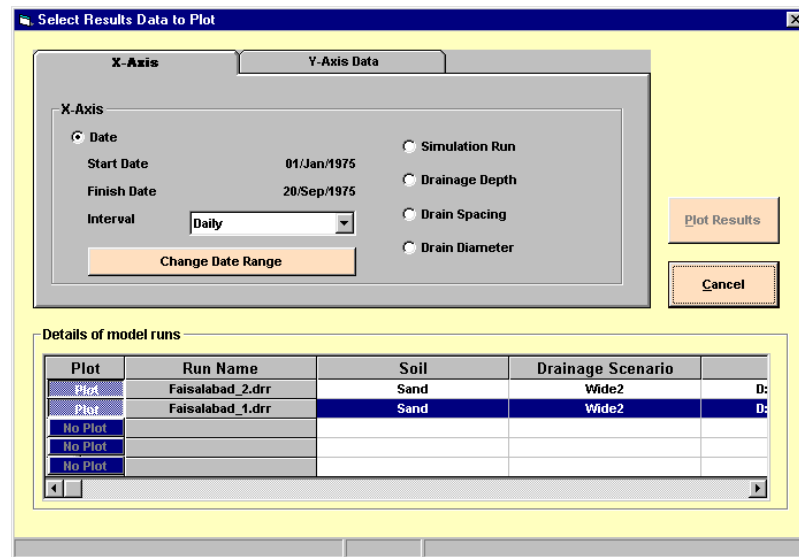


Fig. 34 Defining a plot

7.5.1 Selection of result files to be plotted

WaSim enables up to 5 sets of results to be stored in memory simultaneously, and any combination of these can be included within a chart. To select/deselect a results file from the plot, *click the **plot/no plot** button to the left of the name of the result file*. WaSim will not allow a chart to be produced unless at least one set of results has been selected.

7.5.2 Date Range

To adjust the dates, between which the chart will be plotted, *click **Change Date Range***. This will display the change dates screen and enable the dates to be changed as required.

7.5.3 Interval

WaSim allows simulation runs of up to 30 years in duration, and given that up to 30 results are calculated and stored each day, the number of points to be plotted can become extremely large. On some computers, this may result in a short delay before a chart is produced, and therefore WaSim allows aggregation of data on a monthly basis to reduce the number of points to be plotted. If the difference between start and finish dates is greater than 1 year, WaSim defaults to aggregating the data on a monthly basis before plotting, although the user can override this by use of the drop-down list box.

This option is only applicable when daily or cumulative values are to be plotted.

7.5.4 X-axis series

By default, WaSim assumes the x-axis data series will be the date. However, this can be changed so that charts with the name of the simulation run on the x-axis, or a scale based on a drainage parameter (size, spacing or depth) can be produced. Up to 2 result files need to be selected to produce the latter chart.

7.5.5 Y-axis series

The results available for plotting on the y-axis depend on the option selected for the x-axis of the graph.

7.5.5.1 Daily and cumulative results

With the date selected as the x-axis series, either daily or cumulative values can be plotted.

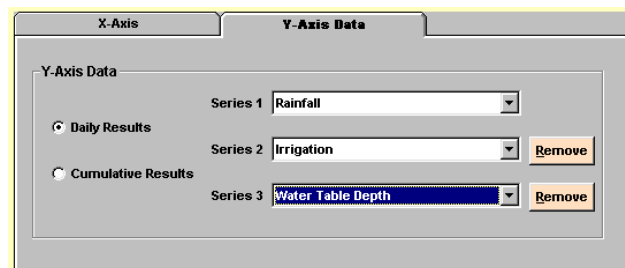


Fig 35(a). Selection of results to be plotted

The choice between actual daily values and cumulative values can be made by use of the appropriate option buttons. To select a series to plot, *click the* arrow at the right of the appropriate dropdown list box. To clear a selection, simply *click* the appropriate **Remove** button.

The choice of available series for the third dropdown list box is dependent upon the choices made in the first two. Only those series that can be plotted on the same y-axis scale as one of the previously selected series can be viewed.

7.5.5.2 Y-axis series - maximum/minimum/average/total results

With the x-axis series not set for dates, maximum, minimum, average and total (where appropriate) values can be plotted.

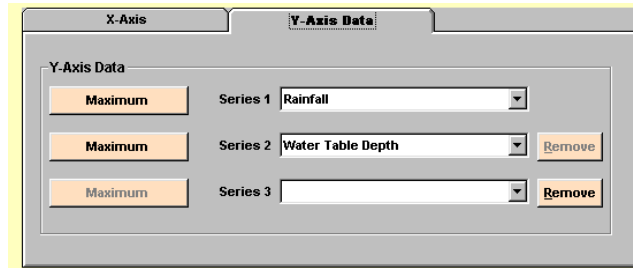


Fig 35(b). Selection of results to be plotted

The choice between maximum, minimum, average or total values can be made by *clicking* the appropriate button until the caption displays the required choice. To select a series to plot, *click* the small arrow at the right of the appropriate dropdown list box. To clear a selection, simply *click* the appropriate **Remove** button.

The choice of available series for the third dropdown list box is dependent upon the choices made in the first two. Only those series that can be plotted on the same y-axis scale as one of the other two series can be viewed.

7.5.6 Plotting chart

Once all the above selections have been made, *click* the **Plot** button.

7.5.7 In-chart options

Once a chart has been displayed (see examples below) there are a number of features available to the user as described below:

- *Pressing* **<CTRL + C>** on the keyboard copies both the chart and its underlying data to the clipboard. Either of these can then be pasted into a word processor or spreadsheet package
- *Clicking* a point on a chart and *holding* the mouse cursor over this point will display the value at that point
- Once a point has been selected (see above) the currently selected point can be changed as follows:
 - **<F12>** - move forwards one point
 - **<F11>** - move back one point

- <F9> - move up one series
- <F8> - move down one series
- Any of the chart elements can be repositioned or resized by using standard “drag-and-drop” methods (*select* the element to be repositioned/resized and *hold-down* the left-mouse button and drag/resize the element as required)
- *Clicking* the **Print** button will output the chart to a printer, if one is connected.

8. Technical Issues

8.1 WaSim Specification

WaSim can be supplied on either CD-ROM (recommended) or Floppy Disk.

Minimum Hardware Specification

- A 486 Processor
- 8 Megabytes of RAM
- SVGA Monitor - set at a minimum resolution of 800 x 600

Recommended Hardware Specification

- Pentium Processor
- 16 Megabytes of RAM
- SVGA Monitor - set at 1024 x 768 resolution, and High Colour (16 bit)

Software Requirements

- Windows 95/98/NT, or later, operating system

8.2 Year 2000 Compliance

This topic describes how WaSim conforms to the requirements for Year 2000 conformity as specified in BSI DISC PD2000-1:1998.

General: WaSim uses the Gregorian Calendar and is applicable for dates after 1 January 1900.

Rule 1. General integrity. WaSim will successfully cope with roll-over of dates.

Rule 2. Date integrity. WaSim will correctly calculate, manipulate and represent dates for the purpose for which it is intended.

Rule 3. Explicit / implicit century. Where the original data file contains explicit representation of the year (i.e. four-digits), this is used in WaSim. If the original data file contains two-digit years, then a value greater than 50 implies 19xx (twentieth century) and a value equal to or less than 50 implies 20xx (twenty first century).

Rule 4. Leap years. WaSim successfully identifies leap years (as defined by ISO 8601:1998) and correctly identifies 2000 as a leap year.

Acknowledgements

The assistance of Dr MN Bhutta, Director, and his staff at the International Waterlogging and Research Institute in Lahore, is gratefully acknowledged. Particularly valuable were a series of working meetings arranged by IWASRI with organisations in Pakistan involved in agricultural drainage. The hands-on sessions provided invaluable feedback to the program designers. Thanks is extended to those other organisations concerned: to Professor M Latif (Director), Dr A Tariq, and staff at the Centre for Excellence in Water Resources Engineering, Lahore; staff of the National Drainage Programme, Lahore; Dr SA Prathapar (Director) and staff at IWMI; Dr R Choudrhy (Chairman DWM) and staff at Faisalabad University; Dr M J Khan (Chairman DWM) and staff at NWFP Agricultural University, Peshawar; staff of Pakistan Drainage Consultants, Peshawar.

The support and encouragement of DFID throughout the project period is also acknowledged with thanks.

A water balance simulation model for teaching and learning – WaS

Hess, Tim M.

2008-03-13T00:00:00Z

Tim Hess and Chris Counsell, A water balance simulation model for teaching and learning – WaSim, Paper presented at the ICID British Section Irrigation and Drainage Research Day, 29 March 2000, HR Wallingford

<http://dspace.lib.cranfield.ac.uk/handle/1826/2455>

Downloaded from CERES Research Repository, Cranfield University