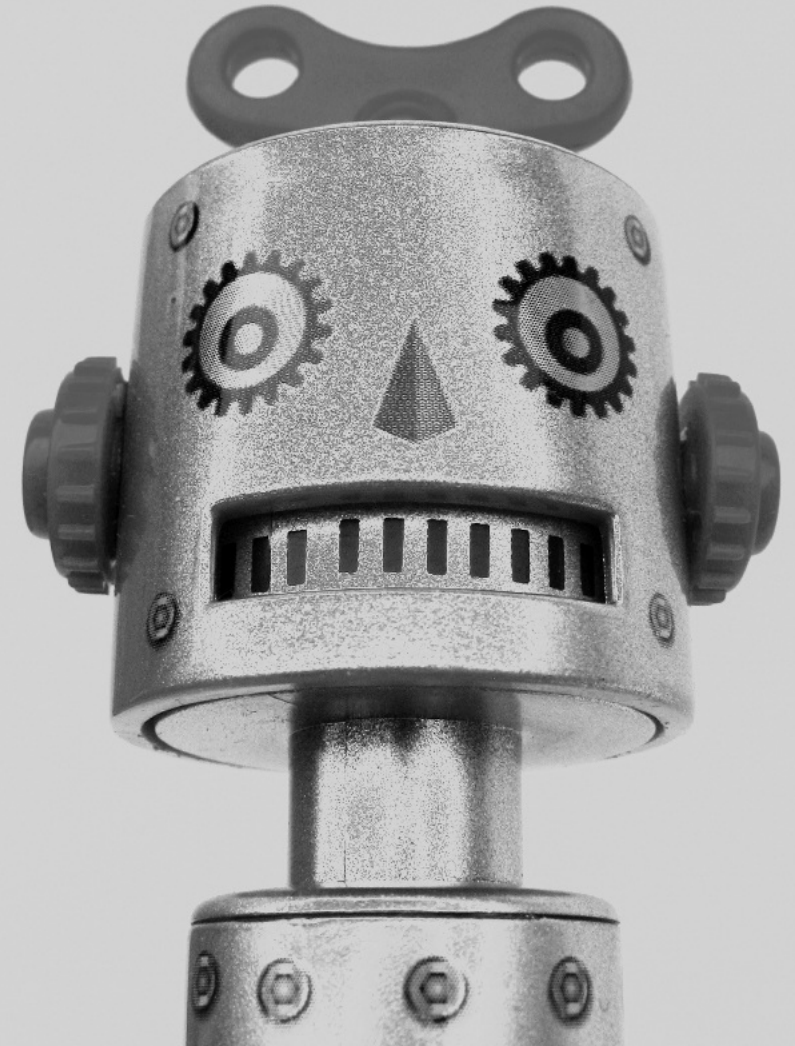


# TRUST IN AUTOMATION

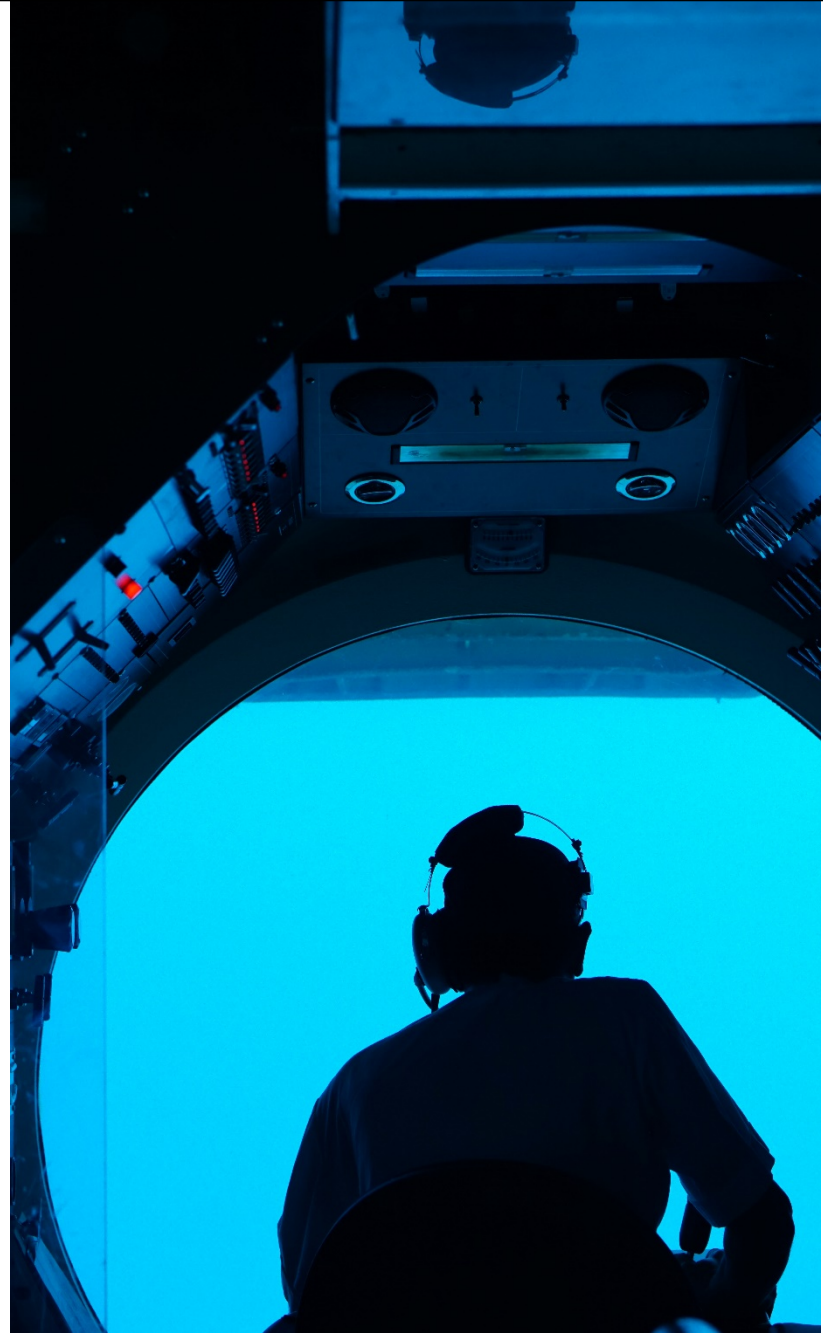
A qualitative study of behaviour and attitudes towards emerging technology in Military culture

MEGAN FIELD, University of Birmingham



# QUICK OVERVIEW

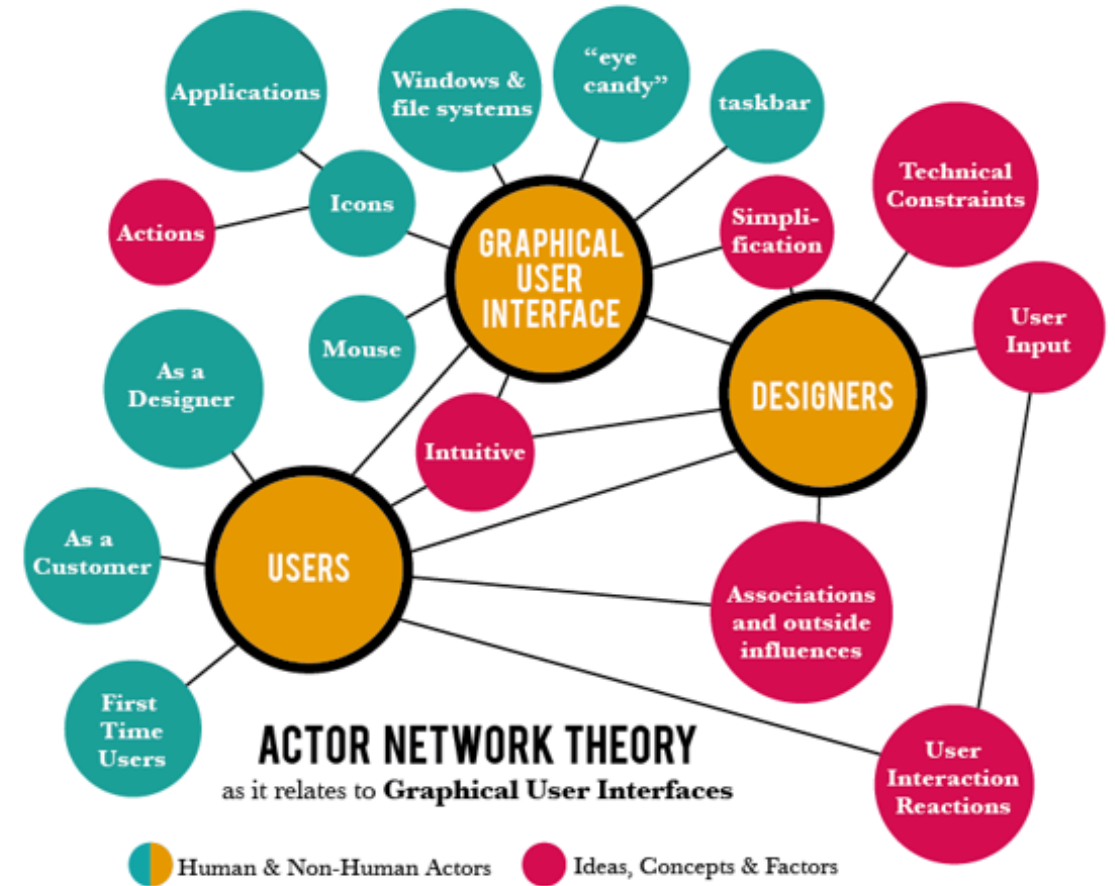
- ❖ Background and Context
- ❖ Utilising Narratives In The Military
- ❖ Systematic Scoping Review Outcomes
- ❖ The Research So Far
- ❖ Future Direction





# OUR EXPLANATIONS OF TECHNOLOGY

- ❖ Socio-technical Systems and Macro-ergonomics
- ❖ Actor-Network Theory

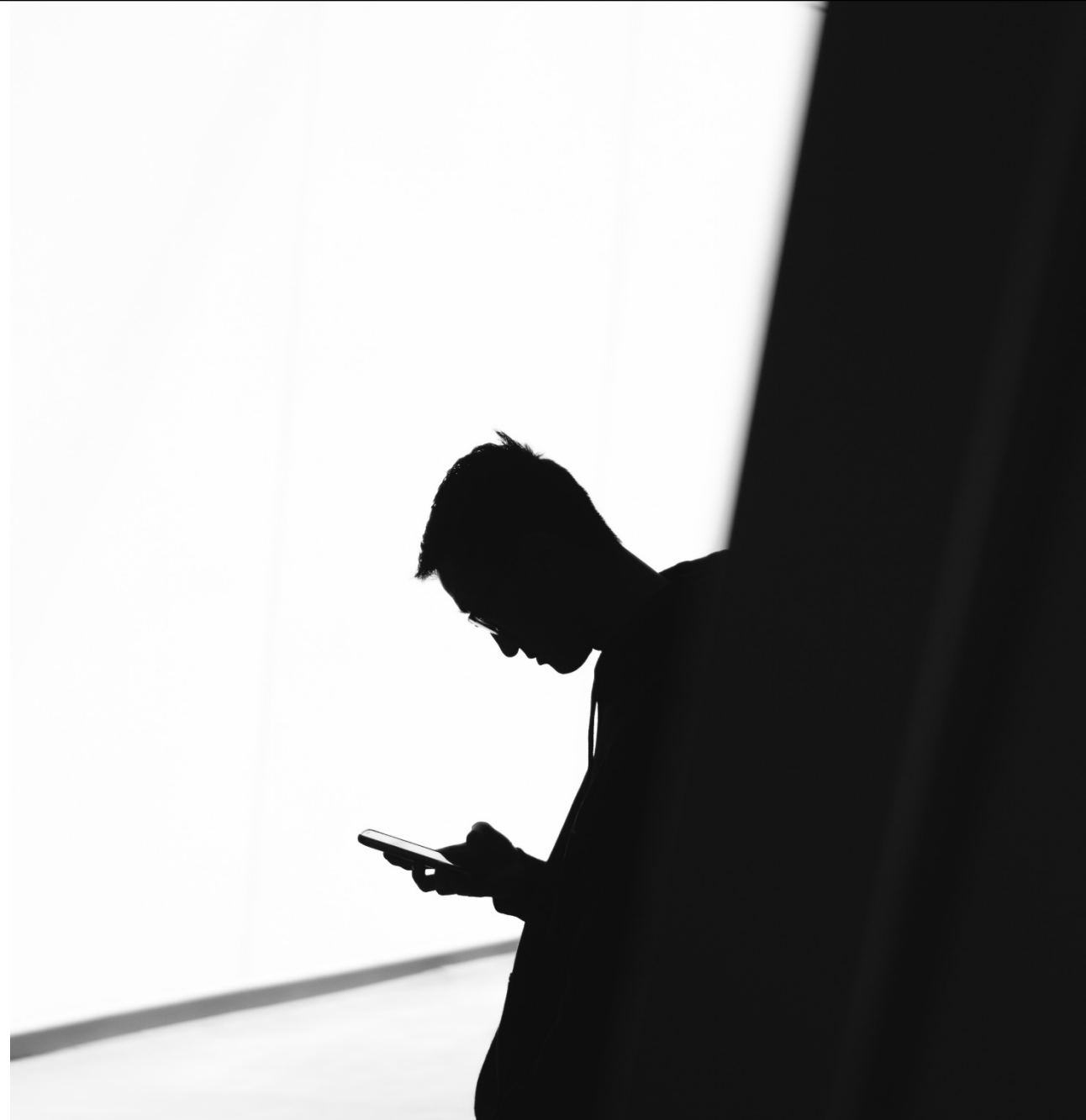


WHEN YOU TAKE A SCIENTIFIC TOPIC YOU  
END UP STUDYING HUMANS AND WHEN YOU  
STUDY HUMANS YOU END UP STUDYING A  
PIECE OF SCIENCE

Bruno Latour (2013)

# HUMAN-SYSTEM INTERACTION

- ❖ The Media Equation
- ❖ Human-Human/Human-System Teaming
- ❖ Category Boundaries and Uncanny Valley
  - ❖ Mental Schema of Robots as More Human (Broadbent et al, 2011)
  - ❖ Uncanny Valley (Mori, 1970/Mori & MacDorman, 2012)





## FRAMING

- ❖ Narrative approach seeks capturing experience
  - ❖ Constructed and mediated between actors to acquire complex, multi-faceted and nuanced views of reality
- ❖ Structuring of experience
  - ❖ Narrative constructs and reconstructs remembered stories of a person's experience.
  - ❖ Values, beliefs and experiences guide interpretations.
- ❖ Narratives are characterised by multiple voices, perspectives, truths and meanings.



# TRUST

- ❖ Trust, Trustworthiness and Trust Propensity
- ❖ Trust and Reliance
- ❖ Trust and Antitrust



# NARRATIVE IN THE MILITARY

- ❖ Storytelling to convey complex technical communication
- ❖ Comprehension, retention and analysis of information
- ❖ Nuances in inter- and intra-personal psycho-socio-cultural differences



## Transparency and Fidelity

Level of Automation issues will continue to have fidelity and accuracy issues inherent to technological limitations.

A crucial factor in both trust and situational awareness is transparency of system/automation actions.

## Qualitative VS Quantitative

Performance measures are the primary metrics for assessing impact of priming for Mental Models. A variety of critically assessed questionnaires were utilised.

Verbal protocol is the main study design for qualitative sources.

## SMM and Team Narrative

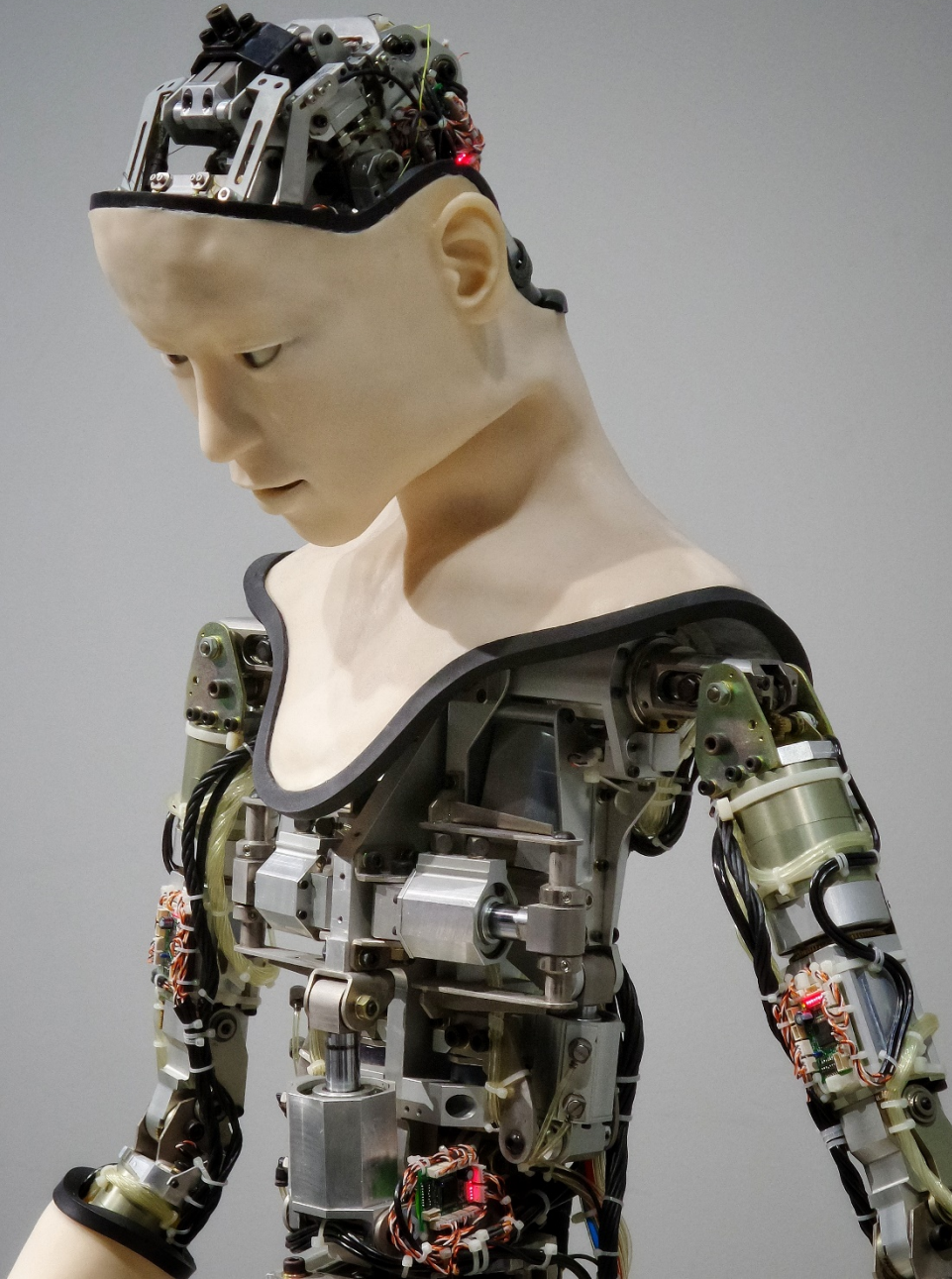
Developing appropriate team mental models is influential in mission success and optimal group performance.

The human-human team narrative has been criticised as inappropriate for human-automation teams.



## RESPONSIVE INTERVIEWING

- ❖ Civilian Cohort: 7 Participants (SME and Non-SME)
- ❖ Military Cohort: 20 Participants (Army, RAF, Surface Navy, Subsurface Navy)
- ❖ Semi-structured responsive interviewing
- ❖ 32 Hours of Transcription // 250,000 words
- ❖ Interpretative Phenomenological Analysis and Hierarchical Content Analysis



## THOUGHTS ON TRUST AND TECH

- ❖ Trust is defined as *positive expectations* but negative experiences are oft used as example interactions
- ❖ Dissonance between verbalised sentiments and underlying expressions
- ❖ Expressions of mistrust and distrust towards technology emerge closer to category boundaries
- ❖ Conflicting narratives within and between military subgroups whether the Military culture primes operators for technology adaptability.
- ❖ Expressed differences in attitudes and behaviours between their individual subcultures across the branches of the military. Attitudes towards trust seem to persist post-service regardless of time elapsed in civilian roles

# FUTURE DIRECTION

## Post-Experiment Analysis and Frameworks

- ❖ Data Frame Theory
- ❖ Sensemaking and Flexecution

## Training Vignettes and Narratives

- ❖ Story based learning and training based upon the dominant narratives concluded from the research.
- ❖ Graphical Narrative and Storytelling as alternative data visualisation technique.



# REFERENCES

Baier, A. (1986). *Trust and antitrust. ethics*, 96(2), 231-260.

Broadbent, E., Lee, Y. I., Stafford, R. Q., Kuo, I. H., & MacDonald, B. A. (2011). *Mental schemas of robots as more human-like are associated with higher blood pressure and negative emotions in a human-robot interaction. International Journal of Social Robotics*, 3(3), 291.

Bok, S. (1999). *Lying: Moral choice in public and private life*. Vintage.

Colquitt, J. A., Scott, B. A., & LePine, J. A. (2007). *Trust, trustworthiness, and trust propensity: a meta-analytic test of their unique relationships with risk taking and job performance. Journal of applied psychology*, 92(4), 909.

Kaplan, F. (2004). *Who is afraid of the humanoid? Investigating cultural differences in the acceptance of robots. International journal of humanoid robotics*, 1(03), 465-480.

Lee, J. D., & See, K. A. (2004). *Trust in automation: Designing for appropriate reliance. Human factors*, 46(1), 50-80.

Mori, M., MacDorman, K. F., & Kageki, N. (2012). *The uncanny valley [from the field]. IEEE Robotics & Automation Magazine*, 19(2), 98-100.

University of Bergen UiB. 2013, June 4<sup>th</sup>. Bruno Latour. Retrieved from <https://youtu.be/ApmtxIO1GvM>

# THANK YOU FOR YOUR TIME

*Funding:*

This research is sponsored by EPSRC and  
BAE Systems

*Contact Information:*

Megan Field (MXF551@bham.ac.uk)



**BAE SYSTEMS**