

# Understanding and communicating deathwatch beetle activity on HMS *Victory*



## BACKGROUND

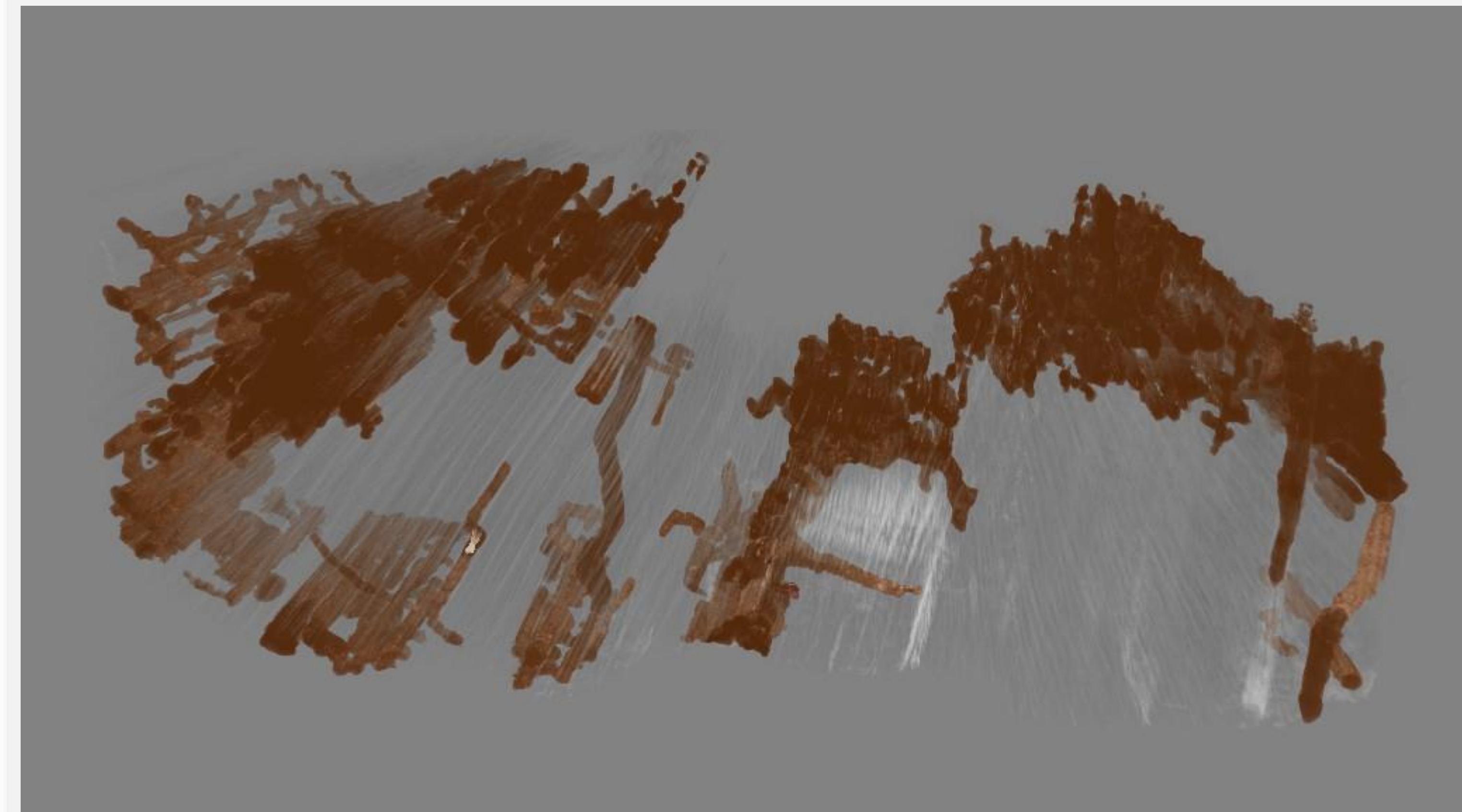
- Infestation on ship first noted in 1932
- Contributes to 15-year conservation programme
- Very little known about the Deathwatch beetle



Copyright © Malcolm Storey, 2012, www.bioimages.org.uk. Some rights reserved



## PROJECT THUS FAR



Tunnel map in sample A7

- Deck plank from HMS Victory with evidence of fungal and deathwatch beetle activity
- $\mu$ CT to map tunnels in 3D and locate larvae and beetles within tunnels
- Beetle and larval activity detected with accelerometer
- 3D models and recordings used to create 2 digital public engagement prototypes

“ This small Beetle, which makes a Ticking or distinct Beating, resembling the Noise of a watch, being rarely heard, and not known, has obtain'd the Name of a Death-Watch ”



Copyright © National Museum of the Royal Navy



## METHODS

- $\mu$ CT of samples to map tunnels
- Non-invasive methods of detection
- Prototypes user tested on ship visitors



## TAKE-AWAY

- Will provide valuable information on Deathwatch beetle behaviour
- Research has many wider applications

## REFERENCES

Allen, Benjamin. 1698. 'VIII. An Account of a Gall-Bee, and the Deathwatch.' *Philosophical Transactions of the Royal Society of London* 20 (245): 375–78. <https://doi.org/10.1098/rstl.1698.0079>.  
'Victory Conservation Management Plan: Volume 1'. 2016. unpublished.

Cathryn Harvey

✉ [Cathryn.Harvey@cranfield.ac.uk](mailto:Cathryn.Harvey@cranfield.ac.uk)

Supervisors: Dr Fiona Brock, Dr Jenny Kidd, Diana Davis, Dr David Errickson, Prof Andrew Shortland