



# Toward a conceptual framework of hyporheic exchange across spatial scales

Chiara Magliozzi<sup>1</sup>, Robert C. Grabowski<sup>1</sup>, Aaron I. Packman<sup>2</sup>, and Stefan Krause<sup>3</sup>

<sup>1</sup>School of Water, Energy and Environment, Cranfield University, Cranfield, Bedfordshire, MK43 0AL, UK

<sup>2</sup>Department of Civil and Environmental Engineering, Northwestern University, Evanston, Illinois, USA

<sup>3</sup>School of Geography, Earth and Environmental Sciences, University of Birmingham, Birmingham, Edgbaston, B15 2TT, UK

**Correspondence:** Robert C. Grabowski (r.c.grabowski@cranfield.ac.uk)

Received: 15 May 2018 – Discussion started: 30 May 2018

Revised: 19 October 2018 – Accepted: 28 October 2018 – Published: 30 November 2018

**Abstract.** Rivers are not isolated systems but interact continuously with groundwater from their confined headwaters to their wide lowland floodplains. In the last few decades, research on the hyporheic zone (HZ) has increased appreciation of the hydrological importance and ecological significance of connected river and groundwater systems. While recent studies have investigated hydrological, biogeochemical and ecohydrological processes in the HZ at bedform and reach scales, a comprehensive understanding of process-based interactions between factors operating at different spatial and temporal scales driving hyporheic exchange flows (HEFs) at reach scale and larger is still missing. Therefore, this review summarizes the factors and processes at catchment, valley, and reach scales that interact to control spatial and temporal variations in hyporheic exchange flows. By using a multi-scale perspective, this review connects field observations and modelling studies to identify the process driving patterns and dynamics of HEF. Finally, the influence of process interactions over multiple spatial scales is illustrated in a case study, supported by new GIS analyses, which highlights the importance of valley-scale factors to the expression of HEF at the reach scale. This conceptual framework will aid the development of approaches to interpret hyporheic exchange across scales, infer scaling relationships, and inform catchment management decisions.

## 1 Introduction

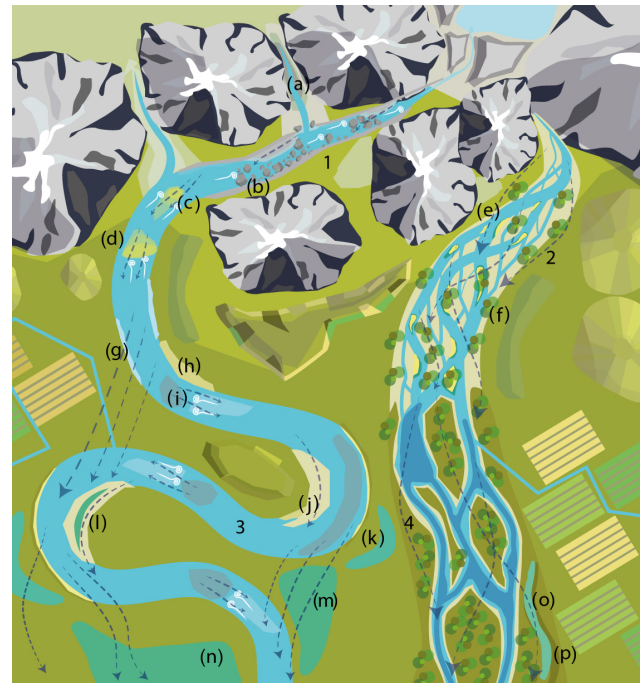
Hyporheic zones (HZs) are unique components of river systems that underpin fundamental stream ecosystem functions (Ward, 2016; Harvey and Gooseff, 2015; Merrill and Tonjes, 2014; Krause et al., 2011a; Boulton et al., 1998; Brunke and Gonser, 1997; Orghidan, 1959). At the interface between rivers and aquifers, hyporheic zones are the expression of vertical and lateral connection of rivers with floodplains and the underlying aquifers and are defined by the interchange of surface and ground waters through hyporheic exchange flows (HEFs) (Malard et al., 2002; Elliott and Brooks, 1997).

HEF plays a significant role in biogeochemical cycling (e.g. carbon and nutrient availability and transformation), ecological food webs, and habitat for diverse organisms (Krause et al., 2011a; Boulton et al., 1998; Brunke and Gonser, 1997). HEF is driven by potential and kinetic energy gradients near the streambed that change hydraulic head and force surface water to flow into, through, and out of the bed (Boano et al., 2014; Cardenas et al., 2004; Elliott and Brooks, 1997). Both hydrostatic (i.e. elevation head) and hydrodynamic (i.e. velocity head) forces of the hydraulic head contribute to HEF variations within rivers and floodplains (Boano et al., 2014; Harvey and Gooseff, 2015). Turbulence (i.e. gravel bed substrate) and biological processes (i.e. bioturbation) also can drive HEFs, but are less studied in streams and rivers (Boano et al., 2014). The hierarchical and heterogeneous nature of river and floodplain systems creates complex spatial and temporal patterns of exchange flows (Cardenas, 2008; Wörman et al., 2007).

Catchment and river characteristics vary markedly along river networks affecting the groundwater and surface water flows that drive HEF. These variations include (i) the differences in hydraulic potential created by topography-driven groundwater flows (i.e. discharge patterns follow topographic lows) and the temporal and spatial scales of the stream system from upstream to downstream, vertically and laterally, i.e. flood spates, overbank flows, etc. (Minshall et al., 1985; Newbold et al., 1982, 1981); (ii) continental groundwater flows and local discharge areas on rivers depend on both large- and small-scale topography as demonstrated by spectral analysis (Marklund et al., 2008; Wörman et al., 2007, 2006); and (iii) complex geomorphological structures (armouring, bedforms, bars and other lateral variability within channels, braiding, meanders, floodplain deposits etc.). Therefore, understanding and predicting HEF dynamics requires consideration of the hydrological, topographical, hydrogeological, anthropogenic, and ecological processes operating across a spectrum of spatial and temporal scales (Ward, 2016).

Previous work has identified multi-scale processes affecting HEF, but has focused primarily on individual processes and controls within river corridors (Ward, 2016; Harvey and Gooseff, 2015; Boano et al., 2014). Existing information has not been sufficiently synthesized to assess the multiple factors and characteristics that control HEF at catchment scales across geographic regions (Table S1, S2, S3 in the Supplement). Similarly, earlier reviews have furthered our understanding of the ecological and functional significance of HZs (Krause et al., 2011a; Boulton et al., 1998; Brunke and Gonser, 1997), the range of mechanisms and biogeochemical implications that influence HEF (Boano et al., 2014; Merrill and Tonjes, 2014; Dent et al., 2001), and the perspectives on and challenges to interdisciplinary river research (Datry et al., 2017; Ward, 2016; Harvey and Gooseff, 2015). Despite this intensive investigation of HEF processes, there has been little investigation of hyporheic processes at the catchment scale rather than at individual geomorphic units (Ward, 2016; Harvey and Gooseff, 2015; Krause et al., 2011a). Recently, Ward (2016) recognized that hyporheic science is still facing the challenge of enabling cross-site comparisons of findings. One of the reasons is the absence of conceptual frameworks to translate patterns of hyporheic flows across scales, enable multi-scale assessment of process controls, and enable identification of common variables.

Therefore, this paper reviews the state of knowledge of HEF: drivers of HEF and process interactions. For the drivers of HEF, Sects. 3–7 discuss five main drivers, hydrological, topographical, hydrogeological, ecological, and anthropogenic, and how spatial and temporal variability in these drivers controls HEF. In the context of multi-scale interactions, Sect. 8 discusses how these drivers interact to create spatial and temporal heterogeneity in HEF direction and magnitude. Both sections highlight knowledge gaps that are important in terms of fundamental understanding and man-

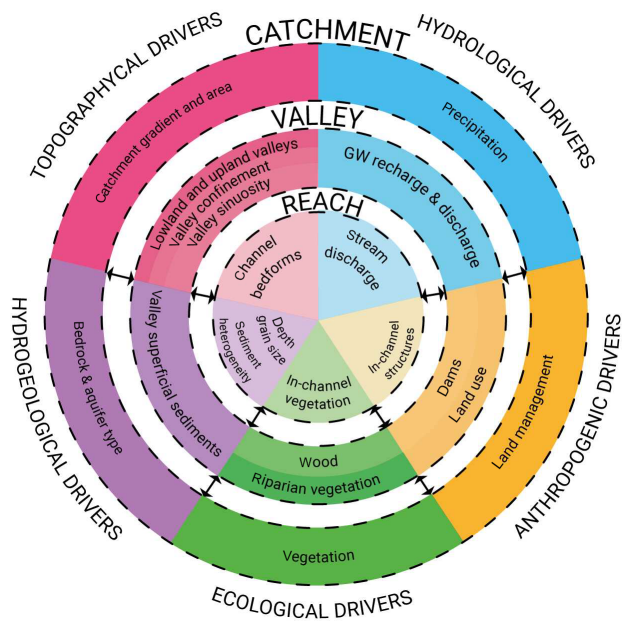


**Figure 1.** Illustration of catchment complexity: scales and features that influence hyporheic exchange flows. Spatial changes in surface topography, land use and vegetation drive geomorphological and hydrological changes at valley and reach scale. At catchment scale, variations in surface topography shape valleys and channel types. Feature 1 refers to confined valleys characterized by straight channels, meandered and braided, and the following floodplain features: scour holes and gravel splays (a). The straight channel presents in-channel cascades (b) and geomorphic features. Feature 2 refers to braided channel morphology with multi-thread channels, an undulating floodplain of bars and islands. In-channel geomorphic units are several types of bars (e), such as mid and lateral bars, and vegetated islands (f). Feature 3 represents a sinuous-meandering floodplain with occasional oxbow lakes and backwater swamps (m, n, k) and in the channel: longitudinal bar (c), transverse bar (d), counterpoint bar (h), pond-riffle (i), point bar (l), chute channel (j). Feature 4 indicates an anabranching valley with multi-thread channels including abandoned channels (o) and backwater swamps (p). The channel can be quite deep and includes islands covered with vegetation.

agement of hyporheic zones. The review follows a hierarchical spatial approach, from reaches to catchment, and provides a structure upon which to explore the individual and interaction effects of factors on HEF and to upscale and downscale across spatially and temporally variable hyporheic processes (Figs. 1, 2).

## 2 Concepts and terminology

The term “hyporheic zone” has been defined variously in the literature, and some confusion still exists within the wider research community about the extent and nature of the HZ. To



**Figure 2.** Conceptual diagram of the key drivers of the hyporheic exchange across scales. This diagram can be read from the centre to the outer part and vice versa, as indicated by the black arrows. Dashed lines represent hidden boundaries between scales. Colour gradient, from light to dark, follows the hierarchical approach of this review from the channel scale to the reach scale to the catchment scale.

help facilitate the integration and presentation of results from a large number of studies spanning a range of disciplines in this review, we use a simplified and standardized terminology for the HZ and HEFs.

Herein, we follow the “flexible” definition of HZ, as reported by Ward (2016): “... saturated subsurface including flow paths that originate from and return to surface water where interactions occur within a temporal scale relevant to the process of interest, and processes of interest occur continuously from the stream–subsurface interface to the hyporheic–groundwater continuum.” In terms of hyporheic exchange, we recognize that a continuum of hyporheic flow paths is associated with different hydrologic residence times (Boano et al., 2014; Cardenas, 2008; Wörman et al., 2007).

In the context of multi-scale exchange, HEF is related to large-scale groundwater–surface-water exchange (GSE), but the terms are not synonymous (Ward, 2016). HEF is an interchange between surface and subsurface waters occurring over short timescales (i.e. minutes to weeks), whereas GSE flows occur at much larger spatial scales and with considerably longer timescales for flows to return to the stream (i.e. months to millennia) (Toth, 1980). Consequently, this review considers large-scale GSE in addition to HEF. At the scale of HEF, GSE can be considered as a unidirectional exchange (i.e. losing causes the river to recharge the aquifer, and gaining causes the aquifer to discharge into the river).

HEF and GSE can act in opposite directions (Stonedahl et al., 2012; Cardenas and Wilson, 2006). For example, a reach under losing conditions due to groundwater recharge can have superimposed HEFs occurring simultaneously (Fox et al., 2014; Stonedahl et al., 2012).

Additionally, we refer to hyporheic “extent” when the HZ expands or contracts in the horizontal (“lateral extent”) or vertical (“vertical extent”) directions, respectively, and use the term “bank storage exchange” for the case where lateral HEF between the river and floodplain is induced by the rise and fall of river water levels (Cranswick and Cook, 2015; Pinder and Sauer, 1971). Finally, vegetation (i.e. vegetation density, riparian, and in-channel vegetation) is considered in this review as the main ecological factor that influences HEF (Heppell et al., 2009; Corenblit et al., 2007). Although not reported in this paper, we acknowledge that other ecological factors such as hyporheic freshwater invertebrates and biofilm have a major role in interacting with HEF (Peralta-Maraver et al., 2018).

### 3 Hydrological drivers

Hydrological drivers influence HEF by changing surface water and groundwater flow regimes and the distributions of hydraulic head. In this section, we provide a summary of how groundwater and river-level fluctuations control the spatial and temporal distribution of hydraulic heads to affect HZ and HEF paths at reach (Sect. 3.1), valley, and catchment scales (Sect. 3.2).

#### 3.1 Groundwater and stream discharge at reach scale

HEF responds systematically to changes in hydrological conditions at the reach scale. Together, river flow regime and event-based fluctuations of groundwater levels control reach-scale hyporheic exchange by changing the distributions of hydraulic head (Boano et al., 2014).

Several studies report that seasonal (i.e. spring–summer and summer–fall transition) and event-based changes in the gradient between river water and groundwater levels cause the HZ to expand or contract (Malzone et al., 2016, 2015). In both losing and gaining flow conditions, the volume of the hyporheic zone contracts under a relatively small flux, while hyporheic residence times decrease moderately (Fox et al., 2016). In particular, during gaining conditions, steep stream-ward hydrologic gradients limit the extent of the HZ (Fox et al., 2014; Wondzell and Gooseff, 2013; Cardenas, 2009; Malcolm et al., 2005; Storey et al., 2003). Conversely, the extent of the HZ and the hyporheic residence time increase during floods (Drummond et al., 2017; Zimmer and Lautz, 2014; Swanson and Cardenas, 2010; Wondzell et al., 2010). This enlargement is caused by the increases in stream stage and velocity, which in turn increase the exchange rate during the flood and drive water farther from

the channel (Bhaskar et al., 2012; Malcolm et al., 2004). Conversely, inconsistent patterns of HZ have been observed in response to changes to stream discharge (Ward et al., 2013; Wondzell, 2006). In mountainous streams, the HZ has been found to expand in small streams at lower base flow discharge ( $Q < 0.01 \text{ m}^3 \text{ s}^{-1}$ ) compared to higher-discharge streams (Wondzell, 2011). This behaviour has been interpreted to result from increasing hydrostatic head gradients associated with flow around channel morphological elements at low flow, such as development of lateral channels and flow around bars (Wondzell, 2006).

Consistently with the above findings, HEF paths do not respond uniformly to stream discharge and groundwater flow at reach scale. Groundwater discharge reduces HEF flux and flow path residence time and length, while stream discharge alone does not significantly affect HEF length and residence time (Schmadel et al., 2017; Gomez-Velez et al., 2015; Boano et al., 2008; Cardenas and Wilson, 2007). In spatially heterogeneous reach morphology, these responses are exacerbated by the presence of reach morphological features (Dudley-Southern and Binley, 2015; Zimmer and Lautz, 2014) (Fig. 4 in Schmadel et al., 2017). Schmadel et al. (2017) observed that flow paths generated by large hydraulic gradients (i.e. bedforms) are less sensitive to changes in hydrological conditions than those generated by the larger context of the valley gradient (Schmadel et al., 2017).

Such complex interactions between groundwater and river regimes generally makes it difficult to identify the dominant drivers of HEF without considering multiple spatial scales. To develop frameworks with improved spatio-temporal resolution of HEF, comprehensive understanding of the valley hydrological condition is required.

### 3.2 Reach-scale HEF in the context of the larger landscape

Interactions at the reach scale between the factors described in Sect. 3.1 often results in heterogeneous responses of HEF that require the consideration of processes at a larger scale (i.e. catchment).

HEF and residence time in river reaches are affected by the relationship between hillslope structure and hillslope water table (Hoagland et al., 2017; Torres et al., 2015; Godsey, 2014; Jencso et al., 2010). To date, model simulations have shown that diel fluctuations of hillslope water tables affect both the length and the residence time of HEF. These fluctuations, which occur due to the temporal lag between stream and aquifer responses, produce a wide range of hydraulic gradients (Wondzell et al., 2010, 2007) and affect HEF by several orders of magnitude. Longer hyporheic flow paths result in locations with larger hydraulic conductivity, large stream amplitude, and large hillslope amplitude with respect to the stream (Schmadel et al., 2017, 2016).

Given the diverse geomorphology of river valleys and the seasonal responses of hillslope water table fluctuations to

large-scale controls (e.g. precipitation), the relationship between dynamic hydrological valley conditions and HEF remains an area of active research (Schmadel et al., 2017; Bergstrom et al., 2016; Schmadel et al., 2016; Nippgen et al., 2015; Wondzell and Gooseff, 2013; Jencso et al., 2009). Recent studies have started to consider precipitation inputs to the catchment to enable cross-catchment comparisons of HEFs (Hoagland et al., 2017; Jasechko et al., 2016). The drivers discussed in Sect. 3.1 and 3.2 vary within and among catchments depending on catchment topography, geology, and finally geography (Hoagland et al., 2017; Jasechko et al., 2016). For example, steep headwater catchments respond rapidly to rainfall because of their small storage capacity (Penna et al., 2016; Gomi et al., 2002; Woods et al., 1995). Rainfall is strongly correlated with seasonal groundwater fluctuations in catchments dominated by transmissive soils (Bachmair and Weiler, 2012). Conversely, in headwater catchment with low-permeability soils, rainfall is only a secondary control, after topography, on the response time of groundwater levels (Rinderer et al., 2016). On the other hand, lowland catchments usually have a slower response to rainfall (days to weeks), although heavy precipitation events can cause local flooding (Monincx, 2006).

Finally, the relationship between groundwater, stream discharge and HEF is dynamic in nature, depending on the cross-scale interaction of hydrological gradients. Thus, HEF findings at the reach scale may not be representative when major changes, e.g. seasonal variations, occur in valley- or catchment-scale characteristics.

## 4 Topographical drivers

Topography is one of the primary drivers of spatial HEF variability. From bedforms to catchments, topographic gradients cause nested hyporheic flow paths (Wörman et al., 2007). In order to understand how HEF varies spatially within the catchment and how these variations in turn affect temporal variations, we discuss HEF at scales within the channel topography (individual bedforms and bedform sequences: Sect. 4.1), within a valley hydrological and geomorphological context (bedforms in valley context: Sect. 4.2), and then within the catchment (Sect. 4.3).

### 4.1 In-channel bedforms

Over recent decades, a range of studies have demonstrated that HEF is proportional to the hydraulic head gradients in the streambed. Both hydrodynamic and hydrostatic forces generated by in-channel bedforms have large effects on the variability of HEF from centimetre to metre scale. However, in reaches where stream velocities are low relative to topographic variability, HEF will be mostly driven by hydrostatic head gradients defined by the water surface topography. In this section, we provide a concise summary of the main



effects on HEF by single bedforms (i.e. steps, riffles, and bars) and bedform sequences (i.e. step-pool, pool-riffle). We considered bedforms that induce hydrodynamically driven HEFs, i.e. ripples and dunes (Sect. 4.1.1), and larger topographic features, i.e. steps, riffles, and bars, that contribute to hydrostatically driven HEF (Sect. 4.1.2) (Boano et al., 2014).

#### 4.1.1 HEF generation by in-channel bedforms

Head pressure gradients created by the channel bedforms drive advective pore water flow into, through, and out of the bed (Elliott and Brooks, 1997). Current knowledge of hyporheic fluxes and their spatio-temporal variability in submerged bedforms has been obtained from simulations (Boano et al., 2014; Irvine et al., 2014; Trauth et al., 2014; Stonedahl et al., 2013; Janssen et al., 2012; Cardenas and Wilson, 2007; Elliott and Brooks, 1997), laboratory experiments (Fox et al., 2014; Tonina and Buffington, 2007), and field experiments (Zimmer and Lautz, 2014; Gordon et al., 2013; Lautz and Fanelli, 2008). Bedforms develop characteristic shapes due to the interplay of streamflow and bed sediment transport. Dunes and ripples are characterized by a smooth water surface profile (Packman et al., 2004) implying that the spatial variation of water surface topography is minimized and the pressure profile strongly depends on dynamic pressures (Marion et al., 2002; Elliott and Brooks, 1997).

In the case of hydrostatically driven HEF, the flow is a function of the head gradient, the size, and the hydraulic conductivity around the bedform (Hester et al., 2008; Gooseff et al., 2006). High channel slope will normally result in deeper HEF and higher HZ depth (Hester et al., 2008; Gooseff et al., 2006). Hyporheic flow structure is controlled by spatial relationship of bedforms to high- and low-permeability regions of the streambed (Stonedahl et al., 2018; Pryshlak et al., 2015; Sawyer and Cardenas, 2009; Packman et al., 2004; Salehin et al., 2004). Riffle-scale exchange, for example, is possible only when high permeability materials surround the stream channel. Water upwells where permeability or depth of gravel decreases in the direction of streamflow and where the longitudinal bed profile is concave (Buffington and Tonina, 2009; Elliott and Brooks, 1997; Harvey and Bencala, 1993a). Water downwelling occurs where permeability or depth of gravel increases, in the direction of streamflow, or where the longitudinal bed profile is convex (Buffington and Tonina, 2009; Elliott and Brooks, 1997; Harvey and Bencala, 1993a). Modelling studies have shown that flow paths and exchange rate vary in the alluvium around riffles across seasons and with the extent of groundwater discharge (Stonedahl et al., 2018, 2012; Storey et al., 2003).

Gravel bars are also functionally equivalent to riffle bedforms for HEF; the hydrologic retention in gravel bars is strongly influenced by bar structure and stream water levels (Trauth et al., 2015; Tonina and Buffington, 2007; Marzadri et al., 2010; Boulton et al., 1998). Unlike fully submerged features, recent findings by Trauth et al. (2015) suggest that

HEF in partially submerged gravel bars decreases with increasing stream discharge as the hydraulic head gradients across the bedform decrease, leading to long residence times under low-flow conditions.

In conclusion, an individual in-channel bedform can have significant effects on HEF and on its residence time distributions. More complex interactions occur across the spectrum of topographic features (Stonedahl et al., 2010).

#### 4.1.2 In-channel bedform sequences

The complexity of nested hyporheic flows will increase with the number and diversity of bedforms in the channel. Local-scale variation in bedform size will drive the longitudinal patterns of upwelling and downwelling, along with multi-scale distributions of HEF at reach scale (Stonedahl et al., 2015, 2013, 2010; Gooseff et al., 2006).

Step-pool morphology behaves differently than pool-riffle and dune-like bedforms (Hassan et al., 2015; Marzadri et al., 2010; Tonina and Buffington, 2007). HEF will develop around a pool-riffle sequence only where the lateral hydraulic gradients (i.e. from the banks to the channel center) are less than the longitudinal hydraulic gradient between the upstream and downstream ends of the riffle (Storey et al., 2003). In gravel bed pool-riffle sequences, significant hydrostatic forces across the channel, high permeability of sediment, and low submergence time generate substantial large-scale hyporheic flow (Tonina and Buffington, 2011, 2007; Buffington and Tonina, 2009; Wondzell and Swanson, 1996). A detailed case study on an upland, gravel-bed river with a riffle–pool bedform sequence showed that, although the expected pattern of downwelling and upwelling conditions were generally observed along the bedform sequence, seasonal variations in hyporheic fluxes occurred because of asynchronous local ground water recharge relative to flow regime (Gariglio et al., 2013). At the riffle–pool scale, this is consistent with previous studies reporting seasonal variations in hyporheic temperature dynamics, with stream topography, sediment stratification, and groundwater interaction all affecting local upwelling and downwelling in riffle–pool systems (Krause et al., 2013; Hannah et al., 2009).

Dune–ripple complexes are less influenced by hydrostatic forces than riffle–pool sequences (Tonina and Buffington, 2011); gradients are much lower than for riffle–pool and step–pool sequences and little affected by spatial and temporal changes in water surface elevation. Simulations have also shown that dunes contribute more than meanders and bars to reach-scale HEF (Stonedahl et al., 2013). Further, the volume of water exchanged and the hyporheic residence time across bedforms is not linearly additive (Stonedahl et al., 2013). Instead, hyporheic exchange is maximized when one topographic feature dominates (Stonedahl et al., 2013). In lowland rivers, the lower slope, finer sediments, and more constant flows favour the development of dune–ripple sequences (Elliott and Brooks, 1997; Marion et al., 2002) characterized

by high relative submergence and smooth water surface profiles (Packman et al., 2004). Under these conditions, the spatial variation of water surface topography is minimized and HEF is induced primarily by dynamic pressure variations.

These findings suggest that in-channel bedforms often control HEF, although these local exchange flows are still strongly modulated by stream and groundwater dynamics at reach and valley scale.

#### 4.2 Alteration of in-channel bedform-induced HEF by valley hydrology

The patterns of HEF generated by individual bedforms and bedform sequences are altered by the hydrodynamic conditions of the valley. Longitudinal valley gradients create hydrostatic head gradients that influence water moving across and down valleys and thus HEF (Harvey and Bencala, 1993a).

Schmadel et al. (2016) suggested that valley slope primarily controls the timing of HEF while cross-valley slope and down-valley slope determine net gaining or losing conditions. When bedforms are analysed with respect to channel gradient, it can be seen that gentle slopes of lowland rivers generate slower currents with deeper flows, lower relative roughness, and less valley confinement, resulting in less bedform-induced exchange (Tonina and Buffington, 2007) (Fig. 3). For example, dune–ripple streams that occur in lowland rivers typically exhibit less spatial and temporal variability in water surface elevation than riffle–pool streams (Tonina and Buffington, 2011). In higher-gradient valleys, the flow is predominantly down-valley and spatial variations of hydraulic gradients are paired with changes in cross-sectional areas of the valley and with the hydrodynamic head gradients generated by in-channel bedforms to induce water downwelling into the HZ (Wondzell, 2012; Cardenas et al., 2004). In this setting, hydrogeological properties can have a major role in controlling valley hydrologic exchange: Ward et al. (2012) and Anderson et al. (2005) observed that in steep and constrained sections of their study area, the HEF in step-pool sequences is limited by the underlying bedrock rather than by hydraulic gradients.

In conclusion, both positive and negative relationships between hyporheic zone extent and down- and cross-valley gradients have been reported in the literature, suggesting that detailed resolution of hydraulic gradients and knowledge about the valley setting are necessary to understand controls on HEF (Ward et al., 2012).

##### 4.2.1 Valley confinement

The extent of valley confinement indicates different process domains and determines the capacity of the river to adjust in planform (Table 1). Several studies have linked HEF to valley confinement and shown that HZ depth is restricted, HEF is reduced, and hyporheic residence time is decreased

in highly confined valleys (Buffington and Tonina, 2009; Wright et al., 2005; D'angelo et al., 1993; Stanford and Ward, 1993) (Table 1). While GSE and HEF are both limited in confined valleys, bedrock fractures and fissures may allow some hyporheic exchange, depending on their degree of connectivity with the aquifer (i.e. bedrock and colluvial channels in straight and sinuous planforms) (Gurnell et al., 2016; Graham et al., 2010; Freer et al., 2002; McDonnell et al., 1997, 1996). Certainly, the coupling of small changes in water table elevation and bedrock topography can have a large impact on the hyporheic flows (Oxtobee and Novakowski, 2002). For example, HEF transport is expected to be more uniform in lowland rivers, where the flat land surface and shallow aquifers with low transmissivity favour a topographically controlled water table, than in upland environments where bedrock outcrops may confine HEF and influence cross-valley hydraulic gradients (Ward et al., 2012).

Bedrock outcrops at valley margins can have opposing impacts on HEF. On the one hand, they can limit the infiltration of the stream water into the subsurface and restrict the hyporheic zone (Kasahara and Wondzell, 2003). Indeed, bedrock outcrops can constrain valleys where steep positive vertical hydraulic gradients result from discontinuities of superficial deposits permeability and shallow bedrock (Ibrahim et al., 2010). In this case, the HEF can be limited to superficial layers of the riverbed. On the other hand, the irregularities of bedrock projections favour changes in the alluvium volume (Buffington and Tonina, 2009), thus driving stronger hyporheic exchange from the subsurface to the stream and preventing deeper GSE. In fact, the interchange between bedrock and alluvial valleys favours HEF, because of increased downwelling and upwelling where a thin layer of alluvial deposits overlies shallow bedrock (Ward et al., 2012; Wondzell, 2012).

Conversely, in unconfined valleys, floodplain sediments typically represent a mosaic of coarse and fine sediments that originate from hillslopes, bed material (i.e. bedload), and suspended sediment deposited during overbank flooding, within the context of channel adjustment over time (e.g. migration and avulsion) (Nanson and Croke, 1992) (Table 1). Tonina and Buffington (2009) classified channel types by examining how bedforms generate hydrodynamic pressure variations and drive hyporheic exchange (Fig. 3). Generally, unconfined channels have smaller vertical hydraulic gradients and discharges than confined channels, caused by the lower channel gradients and by the heterogeneity of sedimentary deposits (Ibrahim et al., 2010). We synthesize available information on underlying geology, in-channel sediment, and valley confinement at valley and reach scales in Table 2, where potential HEF response is indicated for different channel planforms, geomorphic units, and floodplain characteristics.

In conclusion, empirical and modelling studies not only suggest the dominance of hydrologic exchange flows by small geomorphic features but also that lateral exchanges of

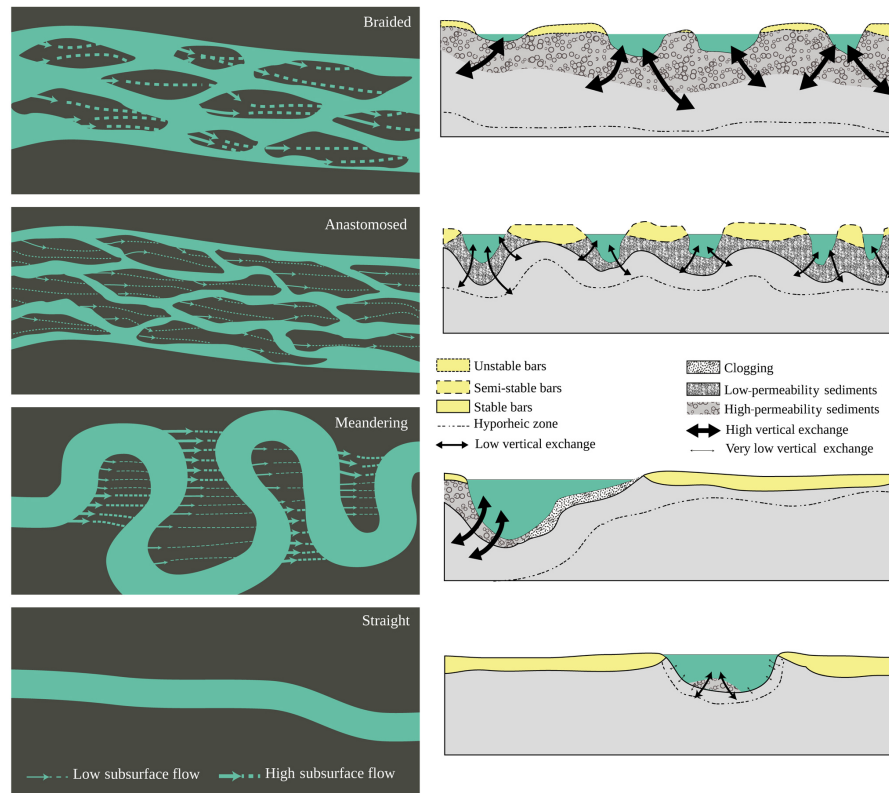
**Table 1.** Expected hyporheic exchange flows in different channel types. Geomorphic unit refers exclusively to in-channel features. Sources: Gurnell et al. (2016); Wondzell and Gooseff (2013); Buffington and Tonina (2009); Nanson and Croke (1992).

Floodplain type	Characteristics of floodplain	Floodplain geomorphic units	Expected HEF floodplain scale	Channel planform type	Channel geomorphic units	Expected in-channel HEF
Confined, steep, narrow valley	High energy, coarse sediment from poorly sorted boulders and gravel with sand and soils, to basal gravels with sand and silt.	Large boulder, levee, deep black channels, scour holes.	Confined HEF which is driven by in-channel geomorphic units. Short residence times.	Colluvial: single-thread or straight sinuous.	Rock-steps, cascades, rapids.	Colluvial channels are usually strongly confined and stable. Very coarse and with limited supply of sediment. Cascade and rock steps would likely allow head variations and near-bed turbulence, which enhances HEF.
Braided confined, partly confined, unconfined	Medium energy. Abundant sediment load from gravel to sand and silt.	Abandoned channels, bars, islands.	Lateral HEF enhanced by alluvium and head variations (hydraulic conductivity). High residence time.	Alluvial: single-thread or straight sinuous.	Small pools, step-pools, bars.	Alluvial channels are relatively stable for a long time (very coarse to coarse material). Broken, fast-flowing turbulent flow. Where step-pool units occur the HEF is enhanced.
Sinuous, meandering	Medium energy. Mostly sand with silt and gravel.	Smooth to undulating, floodplain surface often with areas of vertically accreted fine sediments, backswamps, ponds.	Lateral HEF enhanced by alluvium and head variations (hydraulic conductivity) or limited by fine deposited areas. High residence time.	Alluvial channels. Multi-thread.	Pools, riffles, riffle-pools, laterals bars, mid-channel bars, islands.	Highly unstable vertically and laterally. Sediment supply high. Expected head variations, alluvial volume variations, and hydraulic conductivity variations that likely enhance HEF.
Anabranching	Low energy. Fine sediments from silts and clays to sands.	Flat, floodplains, extensive islands, peat and lakes swamps, splayes, side-levee.	Vertical HEF enhanced or limited by alluvium and head variations.	Single, thread-sinuous or meandering. Multi-thread anabranching.	Pools, riffles, point bars, bars, dunes. Islands, ripples and dunes, abandoned channels.	Relatively unstable and subjected to progressive migration. The instability reflects the geomorphologic units that likely promote HEF. Predominantly stable. Channel variation in sediment alluvium would likely drive vertical HEF.

**Table 2.** Case study about the River Tern, UK (Sect. 8). The table describes the 10 reach sections obtained by dividing the river channel into sinuosity units based on changes in the axis of the overall planimetric course. The units that differed in sinuosity by more than 10 % were considered separate reaches. Surface geology and valley type are evaluated with respect to the extent of lateral hyporheic exchange. The sections are enumerated and described from upstream to downstream. Geology information was extracted from the British Geological Survey website.

Reaches	Underlying geology	In-channel sediment	Description	Channel gradient (%)	Sinuosity
1	Sandstone-conglomerate bedrock of Triassic period. Surficial geology, sedimentary substrate of quaternary period. Alluvial, fluvial, and glacial sediments	Min grain is clay. Max grain is gravel. Mixed argillic and arenaceous grains.	Unconfined valley on both banks. The river is meandering and the riparian vegetation is abundant.	0.001	1.089
2	Mudstone and sandstone bedrock of Triassic period. Surficial geology, sedimentary substrate of quaternary period. Alluvial and glaciofluvial sediments.	Predominant min grain is sand and max grain is gravel. Dominant grain is sand. Arenaceous – rudaceous grains.	Partially confined valley due to industrial plants and homes on the right bank of the river. The river is sinuous, with the presence of a big meander and abundant riparian vegetation	0	0.487
3	Bedrock: mudstone and sandstone interspersed. Sedimentary geology of Triassic period. Dominance of fluvial sediments.	Min grain mud and clay and max grain is gravel. Dominant grains sand and mud. Argillic – rudaceous grains.	Partially confined valley due to homes on the right bank of the river. The river is overall sinuous, with the presence of small meander and very abundant riparian vegetation.	0.052	0.537
4	Bedrock: sandstone. Surficial geology, sedimentary substrate of triassic period. Dominance of fluvial deposits.	Min grain is mud, max grain is gravel. Dominant grain is sand. Arenaceous – grains.	Mostly unconfined valley, presence of homes on the right bank of the river. The river is meandering and there is abundant riparian vegetation.	0.261	1.962
5	Surficial geology of quaternary period. Dominance of glaciofluvial deposit.	Min grain is clay, max grain is gravel. Dominant grain is sand. Arenaceous – rudaceous grains.	Mostly unconfined valley, presence of homes on the left bank of the river. The river is forming small meanders and abundant riparian vegetation.	0.03	0.718
6	Surficial geology of quaternary period. Dominance of glaciofluvial and glacial deposit.	Min grain is clay, max grain is gravel. Dominant grain is sand. Arenaceous – rudaceous grains.	Unconfined valley on both banks. The river is meandering and riparian vegetation is present throughout its length but mostly on the left bank.	0.011	0.6
7	Surficial geology of quaternary period. Dominance of glaciofluvial and glacial deposit.	Min grain is clay, max grain is gravel. Dominance of clay with gravel. Mixed argillic and rudaceous grains.	Unconfined valley on both banks and presence of a small bridge. The river is meandering and riparian vegetation is present throughout its length, albeit more scarce with comparison to previous sections.	0.06	1.87
8	Surficial geology of quaternary period. Dominance of glaciofluvial and alluvial deposit.	Min is clay and max is gravel. Mixed arenaceous and argillic grain.	Mostly unconfined valley, presence of industrial plant on the left bank of the river. On the left bank there are two ponds. The river is forming small meanders, and riparian vegetation is present.	0.05	1.06
9	Surficial geology of quaternary period. Dominance of glaciofluvial and alluvial deposit.	Min is clay and max is gravel. Predominance of sand grains.	Unconfined valley on both banks. The river is meandering and riparian vegetation is present and abundant on the left bank. Presence of pond.	0.003	0.943
10	Surficial geology of quaternary period. Dominance of glaciofluvial and fluvial deposit.	Min grain is clay and max grain is gravel with presence of silt as well. Mix of arenaceous and rudaceous grains with peat and argillic.	Unconfined valley on both banks. The river is mostly sinuous and riparian vegetation is abundant on both banks.	0.012	0.826





**Figure 3.** Representation of channel planforms. Sinuosity influences water exchange within a river segment. Hyporheic exchange increases with sinuosity due to hydraulic gradients in the meander neck (Sect. 4.2.2).

water affect movement of material and energy between rivers and floodplains.

#### 4.2.2 Channel planform

As with valley confinement (Sect. 4.1.2), channel planform is an indicator of lateral HEF interactions with floodplains. Sinuosity is often used as a measure of channel complexity and has been found to be directly correlated with lateral hyporheic exchange in meander bends, and in the paraffluvial zone beneath the streambanks (Kiel and Bayani Cardenas, 2014; Cardenas, 2008; Boano et al., 2006; Wroblicky et al., 1998; Holmes et al., 1996). Sinuosity establishes head gradients across meanders that induce HEF (Boano et al., 2008, 2006) and influences the amount of water exchanged within a river segment (Han and Endreny, 2013; Gomez et al., 2012; Cardenas, 2009; Brunke and Gonsler, 1997).

High-sinuosity rivers (e.g. multi-thread or single/sinuosity meandering) are less prone to a reduction of the hyporheic area with depth, and maintain the HZ under both losing and gaining conditions (Cardenas, 2009) (Table 1). Meander planimetry drives hyporheic flows and influences hyporheic residence times by creating differences in the elevation head of surface water around a meander bend, with spatial and temporal variations as meanders evolve (Stonedahl et al.,

2013; Boano et al., 2008; Revelli et al., 2008; Boano et al., 2006). Naturally forced by the longitudinal head gradient, the hyporheic exchange flows through the meander neck as river water infiltrates into the hyporheic zone at the upstream half of the meander and returns to the river along its downstream half (Kiel and Bayani Cardenas, 2014; Boano et al., 2006; Cardenas et al., 2004). This pattern becomes more complex with the inclusion of floodplain sediment and channel geomorphic features. Lateral hyporheic residence time is short in areas with coarse floodplain sediments and high sediment hydraulic conductivity and increases in meanders with fine-textured sediments (Boano et al., 2006). In multi-thread planforms, simulations have identified the importance of hyporheic flow paths beyond the active channels toward secondary channels and across the floodplain (Kasahara and Wondzell, 2003) (Table 1). Along laterally unconfined valleys, meander creation, extension, and cutoff allow significant river adjustment and river-floodplain interactions, causing both in-stream and off-channel geomorphic features to drive lateral hyporheic exchange (Boano et al., 2006).

In conclusion, studies of valley setting, confinement, and sinuosity suggest that valley topography provides important evidence about disconnection within catchments and can be potentially used as a qualitative and quantitative predictor of HEF. As demonstrated by the above studies, the source of

spatial complexity of HEF is not only the result of single geomorphic structures but of the topographical structure of the valley and of the whole catchment.

#### 4.3 HEF in the catchment topography context

Studies have suggested that catchments with large surface areas have greater hyporheic exchange fluxes (Bergstrom et al., 2016; Laenen and Bencala, 2001; Harvey and Wagner, 2000). Greater variation in water stage correlates on average to greater hyporheic fluxes, but few direct observations are available to support or refute this assumption.

The catchment topographic slope defines the direction of flow by creating discontinuities and localized groundwater flow paths (Jencso and McGlynn, 2011; Jencso et al., 2009; Wörman et al., 2006; Winter, 1998). Emerging upscaling models have started incorporating the information of the catchment area, channel network structure, and head variations of surface topography. These models include (i) the first-order control of water inputs and groundwater head distribution (Caruso et al., 2016; Jencso and McGlynn, 2011; Laudon et al., 2007), (ii) indications of subsurface flow (Caruso et al., 2016; Jencso and McGlynn, 2011; Jencso et al., 2009; Wörman et al., 2006), and (iii) discretizing the catchment into sub-catchments and identifying topographically contributing recharge and discharge areas (Wörman et al., 2007, 2006). These studies indicate that linking topographic complexity to HEF is likely to be an important priority area of research. Patterns of upwelling and downwelling within reaches were observed to occur where the stream profile is concave and convex, respectively, and were used to predict patterns of HEF in high-gradient headwater mountain streams (Anderson et al., 2005). While upwelling zones do not show a significant trend with increasing catchment area, the length of downwelling zones increases with stream size, spacing of channel slope, and decrease of water surface concavity (Anderson et al., 2005).

These findings should encourage interdisciplinary efforts to generate supporting evidence that links HEF across the continuum of headwater, mid-order, and lowland streams as a result of systematic changes in hydro-geomorphological characteristics along the stream network.

## 5 Hydrogeological drivers

Geology affects both the distribution of groundwater in aquifers and HEF flows. In this section hydrogeological effects on HEF are summarized into (i) channel sediment impacts on bedform-induced HEF (Sect. 5.1), (ii) floodplain sediment impacts on GSE between the valley aquifer and the channel (Sect. 5.2), and (iii) bedrock and aquifer type impacts on valley geomorphology (Sect. 5.3).

### 5.1 Channel sediment and bedform-induced HEF

Sedimentological properties strongly control HEF at reach scale. Water flowing through the river bed is affected by sediment grain size, sediment heterogeneity, and depth, promoting spatially diverse hyporheic exchange (Packman et al., 2004). Hyporheic exchange is enhanced in coarser sediments (Packman et al., 2004). As mentioned in Sect. 1, high velocity gradients and turbulence generated at the surface of coarse-sediment beds can also increase diffusion processes, which can produce considerable exchange even when the bed surface is flat and no flows are induced by bed topography (Marion et al., 2008; Packman et al., 2004). The presence of high hydraulic conductivity layers in the streambed increases dispersive mixing between hyporheic water and groundwater (Hester et al., 2013) and creates preferential HEF, either short or long paths, by controlling the ability of the sediment to support advective pumping (Pryshlak et al., 2015; Cardenas, 2009, 2008; Salehin et al., 2004). Dye injections have shown that hyporheic flow patterns are controlled by the spatial relationship of high- and low-permeability regions of the streambed, resulting in faster near-surface transport, shallower penetration, and a shorter mean residence time (Salehin et al., 2004). Furthermore, longer hyporheic flow paths are generated in streams with greater connectivity of sediment strata (Pryshlak et al., 2015), but connectivity can be reduced by the accumulation of fine sediment that clogs pores (Hartwig and Borchardt, 2015; Bardini et al., 2012; Brunke and Gonser, 1997). To date, few studies have addressed the effect of sediment heterogeneity on HEF variability at scales larger than the bedform, although recent works have shown strong impact of sand and gravel deposits on HEF at the reach scale (Zhou et al., 2014) and identified sediment heterogeneity as one of the main drivers of lateral connectivity as well (Pryshlak et al., 2015). In river segments dominated by gravel beds, such as in confined high-energy braided rivers, the hydraulic conductivity is generally high but also highly variable because it depends on the sorting of sediments in the floodplain and on the amount of silt and clay present (Table 1 and Fig. 3). Highly permeable riverbed sediments allow surface water to penetrate easily into the HZ, causing vertical hydraulic gradients to change strongly with local sediment permeability (Packman and MacKay, 2003; Wroblicky et al., 1998; Vaux, 1968).

### 5.2 Hydrogeology in river and floodplain type

Channel planforms respond not only to changes in regional physiography and hydrology (Sect. 4.2) but also to sediment loads (Table 1) (Gurnell et al., 2016; Nanson and Croke, 1992). Differences in particle sizes in river planforms are caused by longitudinal, lateral, spatio-temporal variation of river flows and sediment supply (Bridge, 2009; Baldwin and Mitchell, 2000). Sediment permeability allows varying hyporheic residence time responses according to whether de-

posits are finer or coarser (Hester et al., 2016; Pryshlak et al., 2015; Azinheira et al., 2014; Brunke and Gonser, 1997) (Fig. 3).

Braided channels (Sect. 4.2) occur across a range of valley slopes, depending on the grain size of the bed material in transport, and present either a pool-riffle morphology or a bar-riffle morphology (Gurnell et al., 2016). HEF tends to be very dynamic and spatially varying in these river types; steep head gradients between channels create cross-valley head gradients that control the location and direction of flow paths through the HZ (Fig. 3, Sect. 4.2) (Malard et al., 2002; Ward and Stanford, 1995). This transverse exchange evolves with migration and river sediment transport processes (Stonedahl et al., 2010; Boano et al., 2006; Kasahara and Wondzell, 2003).

In sinuous, medium-energy meandering floodplains, HEF is also usually driven by variations in head gradients (advection processes), which are greater than diffusive transport by 2 or more orders of magnitude (Elliott and Brooks, 1997; Larkin and Sharp, 1992). This type of floodplain typically presents vertically accreted fine sediments (silt and clay). These local low-permeability units and thick sequences of unconsolidated deposits become more compact and less permeable with depth (Winter, 1998); thus, they are characterized by localized groundwater flows and restricted HEF (Angermann et al., 2012; Krause et al., 2012; Stonedahl et al., 2012). In lowland settings with abundant fine sediment load, reduction of groundwater upwelling due to low sediment conductivity layers causes surface water downwelling and induces horizontal hyporheic flow into shallow streambed sediments above low conductivity strata (Angermann et al., 2012; Stonedahl et al., 2012). Spatial variations in the thickness of fluvial–alluvial deposits increase local gradients around clay lenses, and create locally confined conditions (Ellis et al., 2007).

All of these studies indicate that the thickness of superficial deposits controls the extent and rate of hyporheic exchange (Tonina and Buffington, 2011; Buffington and Tonina, 2009; Anderson et al., 2005).

### 5.3 Hydrogeology in the catchment: bedrock and aquifer type

From reach to regional scale, geology affects the distribution of groundwater in aquifers and the spatial variability of GSE and HEF via the aquifer geometry and hydrogeological properties. Lithologic type and structure, weathering history of bedrock, and the type of aquifer impact HEF by altering the distribution of hydraulic conductivities (Fox et al., 2014; Gomez-Velez and Harvey, 2014; Angermann et al., 2012; Krause et al., 2011b; Hiscock, 2007; Woessner, 2000; Morrice et al., 1997; Winter, 1998).

Bedrock exerts vertical and lateral constraints on river forms and processes, by controlling the interaction of GSE and HEF subsurface flows and defining valley confine-

ment (Sect. 4.1.2). Different relationships exist depending on whether the bedrock is consolidated or semi-consolidated and the primary and secondary porosity of rock deposits (i.e. pores and fractures) (Binet et al., 2017; Hoagland et al., 2017; Jencso et al., 2010; Sear et al., 1999). For example, hyporheic studies in chalk catchments have shown the importance of groundwater in supporting GSE at catchment (Lapworth et al., 2009; Grapes et al., 2005), valley, and reach scales (Griffiths et al., 2006; Grapes et al., 2005), although vertical hyporheic exchange in these systems is often restricted by local low-conductivity superficial deposits (Allen et al., 2010; Pretty et al., 2006) (Sect. 5.1). In addition to the characteristics of the bedrock, the degree of confinement of the aquifer due to impermeable layers would prevent or limit GSE and HEF to local interactions (Gurnell et al., 2016).

In confined aquifers, which are separated from the surface by geological strata with low hydraulic conductivities (i.e. aquitards), GSE would likely be prevented (Winter, 1998). HEF would also be prevented by the lack of highly porous alluvium and the low permeability of the bedrock (Buffington and Tonina, 2009; Kasahara and Wondzell, 2003). In confined bedrock, colluvial channels, and confined alluvial channels, GSE and HEF are limited by the local structure of the local sediment (e.g. coarse or fine particles) and the rock structure (e.g. continuous or discontinuous confinement) (Table 7.5 in Gurnell et al., 2016). In unconfined aquifers, generally groundwater is easily conveyed in all directions, leading to high opportunity for both vertical and lateral HEF exchange (Winter, 1998). However, in unconfined alluvial channels, GSE and HEF can be prevented or limited to local interactions depending on local sediment (e.g. coarse or fine particle size) (Table 7.5 in Gurnell et al., 2016).

In conclusion, HEF from reach to catchment scales is highly related to bedrock lithology and superficial sediment. The complexity of geological properties at the catchment scale results in spatio-temporal variations in HEF, in the channel and throughout the river network. A point upstream in the catchment may exhibit HEF dynamics driven by entirely hydrogeological processes compared to the catchment outlet. These differences are especially heightened in catchments with mixed land use and anthropogenic pressures (e.g. dams) for which comprehensive understanding is required of the timescales of water and solute flux with different geologies (Kunz et al., 2017; Sun et al., 2015; Gooseff et al., 2007).

## 6 Ecological drivers

Vegetation has long been known to exert a strong control on land surface hydrology by moderating streamflow and groundwater recharge (Sect. 3.2). By altering hydrological processes on channel banks, floodplains, and the wider catchment, vegetation feeds back on the temporal variability of HEF and likely increases the spatial heterogeneity of this ecological–hydrological relationship. This section describes

in-channel, bank, and floodplain vegetation by focusing on three key types: in-channel vegetation (Sect. 6.1), large in-channel wood (Sect. 6.2), and riparian vegetation (Sect. 6.3).

### 6.1 In-channel vegetation

In-channel vegetation controls HEF directly, through channel-scale flow resistance, and indirectly, through sediment and streambed permeability (Jones et al., 2008). A variety of herbs, shrubs, and trees grow in stream channels, increase bed roughness, and alter flow velocities. They produce a mosaic of hydrodynamic conditions with low-flow velocities in vegetation patches and high flow velocities between patches (Corenblit et al., 2007). Vegetation also alters stage–discharge relationships that affect hyporheic flow, where higher water levels and faster in-channel flows are maintained in mid-summer (Heppell et al., 2009; Harvey et al., 2003). Jones et al. (2008) demonstrated that in-channel vegetation restructures hyporheic flow patterns by creating temporally dynamic deviations of hydraulic gradients. In-channel vegetation increases the friction factor (Harvey et al., 2003) and creates low-flow areas that increase water residence time (Kjellin et al., 2007; Ensign and Doyle, 2005; Wörman and Kronnäs, 2005; Salehin et al., 2003). In particular this aspect has been observed in streams with extensive vegetation where flow can decrease to nearly zero within dense vegetation stands (Ensign and Doyle, 2005; Salehin et al., 2003). Further, the reduction of flow velocity within plant stands leads to increased sediment deposition and the development of plant-mediated sediments that are typically finer-grained than the bed material and have more organic material and lower permeabilities (Corenblit et al., 2007), which also reduce HEF.

In conclusion, both field and laboratory studies have suggested that vegetation shapes transient storage in stream channels, even though there are still difficulties in understanding the feedback of induced HEF at the reach scale. The role of vegetation on patterns of HEF at larger spatial scales is still unexplored. In particular, bank vegetation needs to be considered in terms of hydrological connection between riparian vegetation and the stream (Duke et al., 2007) (Sect. 6.3).

### 6.2 In-channel wood

Within stream channels and valleys, accumulations of wood drive physical complexity of the river network by altering flow resistance, channel–floodplain connectivity, and vertical and lateral accretion of floodplain (Davidson and Eaton, 2013; Wohl, 2013; Phillips, 2012; Jeffries et al., 2003; Mutz, 2000; Sear et al., 1999; Piégay and Gurnell, 1997).

Wood affects channel hydraulics and induces deeper HEF by increasing the variability in vertical head and imposing greater hydraulic resistance (Lautz and Fanelli, 2008; Mutz et al., 2007; Mutz, 2000). Wood generally has a compara-

ble effect to other in-channel structures (Sect. 7.1) and channel roughness elements (Sect. 4.1.2) by driving water into the subsurface, where it travels along short hyporheic flow paths (Boano et al., 2006; Lautz et al., 2006). The impact of wood on HEF varies with valley topographic gradient (lowland and upland), groundwater dynamics (gaining and losing), and sediment transport (Gregory et al., 2003; Jeffries et al., 2003). In lowland rivers, where flow velocity is slow and gradient low, wood induces less HEF and also has less of an effect on spatial patterns of HEF (Krause et al., 2014). Temporally, Wondzell (2006) observed that, although lowland streams are sensitive to changes in wood delivery, and wood decreases HEF at short timescales, large-scale channel adjustments reverse the effect of natural wood removal over longer timescales, causing higher HEF fluxes. Over the long term, wood removal results in longer mean hyporheic residence times, which impacts many hyporheic functions, including temperature, nutrient retention, and oxygen concentrations (Sawyer and Cardenas, 2012; Stoffleth et al., 2008). In upland rivers, wood typically creates steeper head gradients that drive hyporheic flow paths (Krause et al., 2014).

Interactions between flow and wood also produce spatial heterogeneity in deposits of sediments and organic matter (Osei et al., 2015b, a; Sear et al., 2010; Latterell et al., 2006; Naiman et al., 2000; Gregory et al., 1991). Fine and organic-rich sediments are retained, eventually driving higher spatial heterogeneity in HEF (Sects. 5.2 and 7). However, Kasahara and Hill (2006) observed little impact of a large wood-constructed step on oxygen concentrations within the hyporheic zone, presumably due to siltation (Parker et al., 2017; Wohl et al., 2016; Menichino and Hester, 2014).

At the valley scale, wood delivery depends on short- and long-term patterns of land use and geomorphology, often establishing floodplain geomorphology as the dominant control on wood storage in river systems (Benda and Bigelow, 2014). Indeed, one of the variables influencing wood transport and storage is valley geometry. Several studies have documented the importance of woody debris in shaping channel patterns and floodplain evolution in a variety of environments (Collins et al., 2012; Millington and Sear, 2007; Abbe and Montgomery, 2003; Jeffries et al., 2003; Collins et al., 2002; Piégay and Marston, 1998; Sear et al., 2010). However, relatively few studies have examined patterns of wood distribution relative to valley geometry or HEF responses to morphological changes induced by large wood at valley scale (Wohl and Cadol, 2011).

### 6.3 Riparian vegetation

At valley scale, riparian vegetation is well known to shape patterns of GSE and HEF by affecting riverbank filtration and altering water-table elevations via transpiration (Jones et al., 2008; Chen, 2007). Vertical and lateral hyporheic flow patterns are characterized by non-linear spatial variations with both vegetation composition (i.e. species) and evapo-

transpiration (ET) (Larsen et al., 2014; Wondzell et al., 2010; Martinet et al., 2009). The ET from riparian vegetation can increase hyporheic fluxes by 1–2 orders of magnitude at timescales of weeks to months (Larsen et al., 2014).

The effect of ET on HEF is especially significant in low-energy environments, where ET drives the flow of water through sediment into the root, comparable to molecular diffusion and varies at different times of the year (Bergstrom et al., 2016; Larsen et al., 2014; Iturbe and Porporato, 2004; Porporato et al., 2004). Conversely, in high-energy environments where turbulent mixing and bedform-induced pumping are very rapid (Sect. 4.1.1 and Fig. 3), the effect of ET will be lower. On the diurnal timescale, evapotranspiration changes groundwater gradients, with riparian zone vegetation creating the lowest water table in the afternoon, promoting surface water infiltration and hyporheic exchange (Wondzell et al., 2010; Loheide and Lundquist, 2009). Duke et al. (2007) observed a seasonal correlation between transpiration and streamflow with effects on hyporheic gradients. During winter, the correlation is very strong and high water tables and hillslope vegetation lead to negative hyporheic gradients and to high hydraulic head at the bank surface. Conversely, in summer the stream channel has less surface flow and less active exchange within the HZ, and deep flow paths are very important in this period (Duke et al., 2007). At valley scale, the effect of riparian vegetation has been observed to greatly influence water inputs to the stream by controlling channel complexity, resulting in increased retention by increasing residence time and contact between stream water and the hyporheic zone. This hydrological interaction has been studied in arid catchments (i.e. Sycamore Creek, a Sonoran Desert stream; Schade et al., 2005, 2002) where soils are often highly impermeable and the presence of riparian vegetation is dependent on streamflow and shallow groundwater tables (Schade et al., 2005, 2002; Stromberg et al., 1996). Most of these studies have been performed in arid environments, and information on the effects of ET on HEF in humid environments is lacking.

In conclusion, the direct and indirect effects of riparian vegetation on HEF at floodplain or catchment level are poorly studied relative to effects of morphology and groundwater recharge or discharge, although the studies mentioned above provide a foundation for evaluation of groundwater-dependent riparian vegetation on the HZ.

## 7 Anthropogenic drivers

Humans have extensively modified many river systems, and these changes impact the natural factors and processes that control HEF. Alterations to catchments, valleys, and river channels affect the hydrology (e.g. river stage fluctuations), hydraulics (e.g. altering vertical hydraulic gradients), and physiographic setting (e.g. geology, morphology). Effects of three main anthropogenic factors on HEF will be discussed:

(i) river stage fluctuations due to in-channel structures and (ii) valley-spanning dams, and (iii) changes in sediment delivery and channel complexity due to land use and land management.

### 7.1 In-channel structures

Channel structures (e.g. weirs, log dams) that control and change flow conditions by obstructing the flow and dissipating energy have positive and negative impacts on HEF (Daniluk et al., 2013; Hester et al., 2008; Lautz et al., 2006). Upstream of the control structure, a decrease in channel velocities and bedform size, combined with an increase in water depth and channel cross-sectional area, is usually observed and associated with a reduction of turbulent hyporheic exchange in coarser sediments (Blois et al., 2014; Boano et al., 2010; Jin et al., 2009) and advective HEF by ripples, dunes, and bars (D'angelo et al., 1993). Downstream of control structures, a decrease in sediment loads, scour, and turbulent fluxes in coarser sediment are usually observed (Hester et al., 2009). Weirs induce HEF upstream of the obstruction, flow beneath it, and cause upwelling on the downstream side (Jin et al., 2009; Hester and Doyle, 2008). The effect of these structures is complicated and may vary under different flow conditions. Conservative tracer experiments at the reach scale have shown that the cumulative effect of multiple weirs increased the cross-sectional area of the surface stream and of the transient storage zones behind weirs, while HEF decreased (Rana et al., 2017). As a consequence, multiple weirs reduce short and fast HEF while inducing long and slow-moving hydrostatically driven hyporheic flow paths (Rana et al., 2017).

Hence, the evaluation of potential effects of channel-spanning structure on HEF requires rigorous analysis with respect to channel flow variation. The various effects of these measures are complicated and include disruption of downstream flux of sediment, with critical consequences for the alluvial structure and on HEF at streambed or meander scale (Poole and Berman, 2001).

### 7.2 Dams

Large valley-spanning obstructions such as dams can affect HEF by ponding water, disrupting sediment transport, altering vertical hydraulic gradients and varying flow dynamics (Schmadel et al., 2016; Gerech et al., 2011; Fritz and Arntzen, 2007; Arntzen et al., 2006). For example, the daily stage fluctuation from hydroelectric dams regulates the size of the hyporheic zone and the magnitude and frequency of HEF (Sawyer et al., 2012; Gooseff et al., 2006; Lautz et al., 2006; Harvey and Bencala, 1993b). In case of dam-induced water levels changes, a temporal lag occurs between stream stage and aquifer water; HEF is transient and penetrates several metres into the riparian aquifer with residence times of hours (Sawyer et al., 2009). Schmadel et al. (2016) predicted

HEF and residence times from the timing and magnitude of diel fluctuations and valley slope, and found that minimal exchange occurs when the magnitude of stream level fluctuations coincides with the hillslope water table, while maximum exchange occurs when stream stage is out of phase with the hillslope and therefore larger amplitudes in stream and hillslope occur. As a consequence, the effects of dams on HEF vary with channel planform and streambed topography. For example, in river systems characterized by large alluvial channels and unconfined aquifers, the relationship between dam-induced changes in river stage and HEF is characterized by hysteresis (Fritz and Arntzen, 2007). Therefore, HEF is not only dependent on changes in river stage but also on the difference between river and aquifer elevations (Vogt et al., 2010). As river stage varies, there is a fast response of hyporheic flows which rapidly change with the head difference within the HZ, and a slower response of HEF with changes in elevation head of the near aquifer (Fritz and Arntzen, 2007). Additionally, the lower hydraulic conductivity near the surface of the HZ, caused by accumulation of sediment in the alluvial matrix and often characterizing alluvial channels (Sect. 5.2), might restrict the changes in hydraulic pressure over the first centimetre of river sediment (Fritz and Arntzen, 2007). In river systems characterized by small channel sizes and complex streambed morphology, differences in HEF within the subsurface upstream and downstream of dams have been attributed to the overall hydraulic behaviour around the dam and to the changes in topography induced by the dam (Hester et al., 2009; Fanelli and Lautz, 2008). Studies using thermal sensors have reported that upstream and downstream pools created by ponding and channel degradation, respectively, have the potential to drive bedform-scale exchange flow. Temperature results suggest that the highest hyporheic exchange rates occur downstream of dams, while HEF is limited in upstream pools where fine sediment deposits yield low hydraulic conductivities (Fanelli and Lautz, 2008).

### 7.3 Land management and use: impacts on sediment delivery, channel complexity, and hydrological regime

Land cover and management have an impact on HEF through several pathways, as they impact on the quality (i.e. sediment delivery and channel complexity) and quantity (i.e. discharge, infiltration, ET) of groundwater and surface water (Santos et al., 2015; Carrillo-Rivera et al., 2008). The relationship between land use, sediment delivery, and HEF remains an area of active research, but in general both urbanization and agriculture significantly modify channel morphology, streambed sediment size, and hydraulic conductivity by competing effects from increasing fine sediment inputs (which decrease streambed hydraulic conductivity) and stream discharge (which increases advective HEF) (Emanuel

et al., 2014; Ryan et al., 2010; Kasahara and Wondzell, 2003; Morrice et al., 1997; D'angelo et al., 1993).

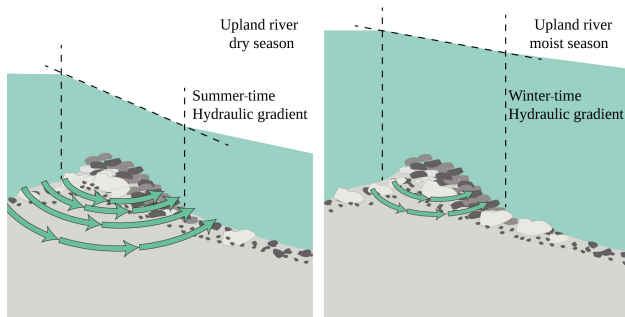
First, decreased porosity and permeability of streambed sediments, e.g. due to increased sediment loads from agriculture, is usually connected to a decrease in in-channel storage and hyporheic exchange flows (Packman and MacKay, 2003; Brunke and Gonser, 1997). Secondly, water abstraction often includes pumping of both stream surface water and groundwater, which can increase groundwater levels and thereby increase groundwater discharge to streams and/or decrease stream water flow to groundwater (Winter, 1998). Lower water tables generally reduce the vertical extent of the HZ by increasing water losses from the stream and reducing the hydraulic gradients that drive HEF (Hancock, 2002). Not only the magnitude but also the length of the hyporheic exchange flows are affected: tracer experiments conducted on several reaches within a single land use type showed a reduction of transient storage as a function of the surrounding land use due to lower geomorphological complexity in agricultural streams, promoting the formation of low-flow zones but reducing HEF (Gooseff et al., 2007). However, little research has been carried out on HEF in urban rivers where low morphological complexity and anthropogenic factors have impacted stream substrates and planforms (Drummond et al., 2017; Gooseff et al., 2007; Grimm et al., 2005; Groffman et al., 2005; Walsh et al., 2005).

## 8 Case study: the River Tern

While previous sections described how individual factors influence HEF, these factors interact across spatial scales to produce a high degree of spatial and temporal heterogeneity in HEF. To illustrate the challenges in resolving hyporheic exchange across scales, we use the River Tern (UK) as a case study. First, we review previously published research on HEF in this stream, and then discuss the multi-scale factors that influence HEF based on the review presented previously in Sects. 3 to 7.

HEF has been studied in great detail at the sub-reach scale in the River Tern (Krause et al., 2013; Angermann et al., 2012; Krause et al., 2011b; Hannah et al., 2009). Results indicate that spatial variations in surficial geology of the floodplain and temporal variations in groundwater levels control local river–aquifer interactions and dictate the rates and patterns of HEF. Strong correlations between rainfall and groundwater levels indicate that the river acted as a recharge boundary, and pumping tests suggest that hydraulic continuity of bedrock with the River Tern is greater at high flows than at low flows (Streetly and Shepley, 2005). At more local scales, Hannah et al. (2009) and Angermann et al. (2012) found that spatial heterogeneity in HEF is controlled by both streambed topography and geological strata. Heat tracer studies identified inhibition of hyporheic flow in peat and clay lenses below the stream (Angermann et al., 2012). Given this

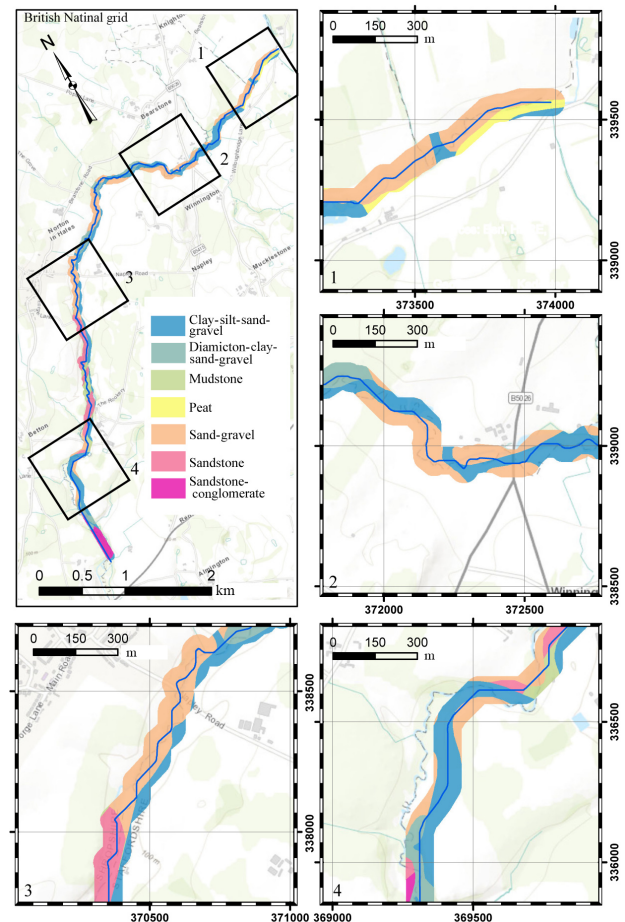




**Figure 4.** Conceptual representation of seasonal variation of hydraulic gradient with water stages in an upland environment. Development of hyporheic exchange in a riffle considering extension and contraction of hyporheic sediment.

structure, hyporheic flow paths in riffles did not coincide with the patterns expected from topography-induced head distributions, and instead seem to be driven by locations of confining peat and clay strata (Angermann et al., 2012). Temperature data indicated that advected surface water or groundwater control heat transport within the hyporheic zone (Hannah et al., 2009). Hannah et al. (2009) and Anibas et al. (2012) showed that the local hydrogeological and geomorphological context explains the observed seasonal thermal differences between riffles: increased downwelling at riffle tails during winter results from greater groundwater influence and high water stage (Fig. 4).

These results highlight the need to integrate interpretations of observed rates and patterns of hyporheic exchange with hydrogeological and geomorphological context. As a starting point, valley type can be used to predict the development and extent of lateral hyporheic exchange. We illustrate the generic nature of valley confinement for the River Tern considering the headwater valley of the Tern at Norton-in-Hales and including the 150 m reach considered in previous studies (Hannah et al., 2009). The catchment is low-lying, with average elevations between 50 and 120 m, and the area is predominantly agricultural, with croplands and pastures accounting for the majority of the land area (Fuller et al., 2002). The valley section has an elevation ranging from 91 to 114 m, a low-channel gradient between 0% and 0.2% and is laterally unconfined. The River Tern and its tributaries are underlain by Permo-Triassic sedimentary rocks (sandstone and conglomerate interbedded), which dominate river–aquifer interactions at regional scale (Allen et al., 1997). This permeable geology supports unconfined highly, moderately productive aquifers characterized by intergranular flows. However, most of the surficial geology of the catchment is from the Pleistocene age, ranging from sand and gravel to diamicton, peat, and clay. The thickness varies spatially across the catchment, with thicker areas in the western part of the catchment comprising up to 30 m of till (Streetly and Shepley, 2005). Throughout the length of the selected section, the river



**Figure 5.** Examples of reaches of the River Tern analysed for HEF (Table 2). The river is subdivided into reaches based on their planform morphology (sinuosity units: when the overall direction of the planimetric course changes) and classified in Table 2. The figure represents for each reach the main river and the surficial and bedrock geology in a buffer area of 50 m from the main channel. Surficial and bedrock geology are represented as greater than the connectivity within sediment strata and higher the HEF. Vertical HEF will be restricted by low permeability units and unconsolidated deposits and lateral HEF by grain size material, river sinuosity, and cross-valley head gradients.

is fringed by wet woodland, predominantly *Alnus glutinosa*. The bedrock is mainly sandstone and mudstone, whereas the superficial geology is sand and gravel with some silt, clay, and diamicton. The valley was divided into reach sections of 850 m and analysed the confinement according to the framework of Fryirs et al. (2016). Some reaches are laterally constrained by anthropogenic structures (roads, houses) on one or both sides (Table 2, Fig. 5). The anthropogenic confinement is most prominent in proximity to the town, where the active floodplain is artificially disconnected by engineered structures. Given that the channel planform is mostly meandering and is not constrained by bedrock (Sect. 4.1.2), lateral

hyporheic flows will likely occur predominately in unconfined areas, where the planform can adjust to its sinuous–meandering shape (i.e. reaches 1, 4, 5, 6, 7, 8, 9, 10 in Table 2). According to the hydrogeology of the area (Sect. 5.1), hydraulic conductivities are expected to be highly variable as a consequence of the sediment sorting and HEF will likely vary within reaches when arenaceous and rudaceous lithologies dominate on argillic and peat sediments (i.e. reaches 2, 4, 5, 6, 8, 9 in Table 2).

Finally, differences along the general gradient of the network (Sect. 4.2 and 4.2.1) are expected where the conjunction of increase in riverbed slope, meander bends, and bedforms (Sect. 4.1) will likely increase hydraulic head gradients and induce HEF (i.e. reaches 4, 5, 7, 8 in Table 2). Previous research suggests that the mosaics of hyporheic exchange in the River Tern are induced by spatial variations in streambed topography and sediment permeability and temporal variations in groundwater recharge. Through the discussion of this case study, we illustrated that assessment of the geological and morphological context for the river channel can help to explain observed patterns in bedform-driven HEF. This work outlines the opportunity to build HEF scaling relationships from basic patterns of channel morphology, valley confinement, and hydrogeological properties.

## 9 Conclusions

Information on the underlying drivers of HEF across space and time and their processes interactions is essential to predicting HEF in river networks. This review assembled, for the first time, studies on drivers of HEF across multiple spatial and temporal scales, to provide a comprehensive overview of the mechanisms by which HEF is generated and modified via interactions between processes. HEF plays such a significant role in mediating physical, chemical, and ecological processes in rivers that considering the HZ in management plans could bring major benefits to re-establish the processes necessary to support the natural ecosystem within a catchment. But, the ability to understand the temporal and spatial dynamics of HEF depends on the holistic perspective suggested here, which considers co-variations between flow, slope, valley confinement, catchment area, sediment size, and river planform and bedform morphology. Direct data on HEF at a larger scale than reaches are severely limited and are required to improve methodological and modelling approaches to HEF and target river management needs (Magliozzi et al., 2018). By summarizing the factors responsible for rates and patterns of HEF in river systems, this review provides a comprehensive framework which supports process-based hydro-ecological knowledge of HEF and the development of transferable approaches to guide river management in including the HZ in their prioritization and planning (Magliozzi et al., 2018).

*Data availability.* For the case study, geological data from the British Geological Survey were used and are available by request at [https://www.bgs.ac.uk/products/digitalmaps/DiGMapGB\\_50.html](https://www.bgs.ac.uk/products/digitalmaps/DiGMapGB_50.html).

*Supplement.* The supplement related to this article is available online at: <https://doi.org/10.5194/hess-22-6163-2018-supplement>.

*Author contributions.* CM developed and prepared the paper with contribution from all co-authors. All authors have approved the final article.

*Competing interests.* The authors declare that they have no conflict of interest.

*Acknowledgements.* This work was supported by the Marie Skłodowska-Curie Action, Horizon2020 within the project HypoTRAIN, grant agreement no. 641939. Aaron I. Packman was also supported by US NSF grant EAR-1344280. We thank the British Geological Survey as data providers. We also thank the two anonymous reviewers for their helpful comments on the paper and the researchers who commented it in the discussion forum.

Edited by: Thom Bogaard

Reviewed by: two anonymous referees

## References

- Abbe, T. B. and Montgomery, D. R.: Patterns and processes of wood debris accumulation in the Queets river basin, Washington, *Geomorphology*, 51, 81–107, 2003.
- Allen, D. J., Brewerton, L. J., Coleby, L. M., Gibbs, B. R., Lewis, M. A., MacDonald, A. M., Wagstaff, S. J., and Williams, A. T.: The physical properties of major aquifers in England and Wales, 1997.
- Allen, D. J., Darling, W. G., Goody, D. C., Lapworth, D. J., Newell, A. J., Williams, A. T., Allen, D., and Abesser, C.: Interaction between groundwater, the hyporheic zone and a Chalk stream: a case study from the River Lambourn, UK, *Hydrogeol. J.*, 18, 1125–1141, 2010.
- Anderson, J. K., Wondzell, S. M., Gooseff, M. N., and Haggerty, R.: Patterns in stream longitudinal profiles and implications for hyporheic exchange flow at the H.J. Andrews Experimental Forest, Oregon, USA, *Hydrol. Proc.*, 19, 2931–2949, 2005.
- Angermann, L., Krause, S., and Lewandowski, J.: Application of heat pulse injections for investigating shallow hyporheic flow in a lowland river, *Water Resour. Res.*, 48, W00P02, <https://doi.org/10.1029/2012WR012564>, 2012.
- Anibas, C., Verbeiren, B., Buis, K., Chormanski, J., De Doncker, L., Okruszko, T., Meire, P., and Batelaan, O.: A hierarchical approach on groundwater-surface water interaction in wetlands along the upper Biebrza River, Poland, *Hydrol. Earth Syst. Sci.*, 16, 2329–2346, <https://doi.org/10.5194/hess-16-2329-2012>, 2012.

- Arntzen, E. V., Geist, D. R., and Dresel, P. E.: Effects of fluctuating river flow on groundwater/surface water mixing in the hyporheic zone of a regulated, large cobble bed river, *River Res. Appl.*, 22, 937–946, 2006.
- Azinheira, D. L., Scott, D. T., Hession, W., and Hester, E. T.: Comparison of effects of inset floodplains and hyporheic exchange induced by in-stream structures on solute retention, *Water Resour. Res.*, 50, 6168–6190, 2014.
- Bachmair, S. and Weiler, M.: Hillslope characteristics as controls of subsurface flow variability, *Hydrol. Earth Syst. Sci.*, 16, 3699–3715, <https://doi.org/10.5194/hess-16-3699-2012>, 2012.
- Baldwin, D. S. and Mitchell, A.: The effects of drying and re-flooding on the sediment and soil nutrient dynamics of lowland river-floodplain systems: a synthesis, *River Res. Appl.*, 16, 457–467, 2000.
- Bardini, L., Boano, F., Cardenas, M., Revelli, R., and Ridolfi, L.: Nutrient cycling in bedform induced hyporheic zones, *Geochim. Cosmochim. Ac.*, 84, 47–61, 2012.
- Benda, L. and Bigelow, P.: On the patterns and processes of wood in northern California streams, *Geomorphology*, 209, 79–97, 2014.
- Bergstrom, A., Jencso, K., and McGlynn, B.: Spatiotemporal processes that contribute to hydrologic exchange between hillslopes, valley bottoms, and streams, *Water Resour. Res.*, 52, 4628–4645, 2016.
- Bhaskar, A. S., Harvey, J. W., and Henry, E. J.: Resolving hyporheic and groundwater components of streambed water flux using heat as a tracer, *Water Resour. Res.*, 48, <https://doi.org/10.1029/2011WR011784>, 2012.
- Binet, S., Joigneaux, E., Pauwels, H., Albéric, P., Fléhoc, C., and Bruand, A.: Water exchange, mixing and transient storage between a saturated karstic conduit and the surrounding aquifer: Groundwater flow modeling and inputs from stable water isotopes, *J. Hydrol.*, 544, 278–289, 2017.
- Blois, G., Best, J. L., Sambrook Smith, G. H., and Hardy, R. J.: Effect of bed permeability and hyporheic flow on turbulent flow over bed forms, *Geophys. Res. Lett.*, 41, 6435–6442, 2014.
- Boano, F., Camporeale, C., Revelli, R., and Ridolfi, L.: Sinuosity-driven hyporheic exchange in meandering rivers, *Geophys. Res. Lett.*, 33, 1–4, 2006.
- Boano, F., Revelli, R., and Ridolfi, L.: Reduction of the hyporheic zone volume due to the stream-aquifer interaction, *Geophys. Res. Lett.*, 35, 1–5, 2008.
- Boano, F., Revelli, R., and Ridolfi, L.: Effect of streamflow stochasticity on bedform-driven hyporheic exchange, *Adv. Water Res.*, 33, 1367–1374, 2010.
- Boano, F., Harvey, J. W., Marion, A., Packman, A. I., Revelli, R., Ridolfi, L., and Wörman, A.: Hyporheic flow and transport processes: Mechanisms, models, and biogeochemical implications, *Rev. Geophys.*, 52, 603–679, 2014.
- Boulton, A. J., Findlay, S., Marmonier, P., Stanley, E. H., and Valett, H. M.: The functional significance of the hyporheic zone in streams and rivers, *Ann. Rev. Eco. Syst.*, 59–81, 1998.
- Bridge, J. S.: Rivers and floodplains: forms, processes, and sedimentary record, John Wiley & Sons, 2009.
- Brunke, M. and Gonser, T.: The ecological significance of exchange processes between rivers and groundwater, *Freshwater Biol.*, 37, 1–33, 1997.
- Buffington, J. M. and Tonina, D.: Hyporheic exchange in mountain rivers II: effects of channel morphology on mechanics, scales, and rates of exchange, *Geography Compass*, 3, 1038–1062, 2009.
- Cardenas, B. M. and Wilson, J. L.: The influence of ambient groundwater discharge on exchange zones induced by current-bedform interactions, *J. Hydrol.*, 331, 103–109, 2006.
- Cardenas, M. B.: Surface water-groundwater interface geomorphology leads to scaling of residence times, *Geophys. Res. Lett.*, 35, <https://doi.org/10.1029/2008GL033753>, 2008.
- Cardenas, M. B.: A model for lateral hyporheic flow based on valley slope and channel sinuosity, *Water Resour. Res.*, 45, 1–5, 2009.
- Cardenas, M. B. and Wilson, J. L.: Effects of current-bed form induced fluid flow on the thermal regime of sediments, *Water Resour. Res.*, 43, <https://doi.org/10.1029/2006WR005343>, 2007.
- Cardenas, M. B., Wilson, J., and Zlotnik, V. A.: Impact of heterogeneity, bed forms, and stream curvature on sub-channel hyporheic exchange, *Water Resour. Res.*, 40, <https://doi.org/10.1029/2004WR003008>, 2004.
- Carrillo-Rivera, J. J., Cardona, A., Huizar-Alvarez, R., and Graniel, E.: Response of the interaction between groundwater and other components of the environment in Mexico, *Environ. Geol.*, 55, 303–319, 2008.
- Caruso, A., Ridolfi, L., and Boano, F.: Impact of watershed topography on hyporheic exchange, *Adv. Water Res.*, 94, 400–411, 2016.
- Chen, X.: Hydrologic connections of a stream-aquifer-vegetation zone in south-central Platte River valley, Nebraska, *J. Hydrol.*, 333, 554–568, 2007.
- Collins, B. D., Montgomery, D. R., and Haas, A. D.: Historical changes in the distribution and functions of large wood in Puget Lowland rivers, *Can. J. Fish. Aquat. Sci.*, 59, 66–76, 2002.
- Collins, B. D., Montgomery, D. R., Fetherston, K. L., and Abbe, T. B.: The floodplain large-wood cycle hypothesis: A mechanism for the physical and biotic structuring of temperate forested alluvial valleys in the North Pacific coastal ecoregion, *Geomorphology*, 139–140, 460–470, 2012.
- Corenblit, D., Tabacchi, E., Steiger, J., and Gurnell, A. M.: Reciprocal interactions and adjustments between fluvial landforms and vegetation dynamics in river corridors: a review of complementary approaches, *Earth-Sci. Rev.*, 84, 56–86, 2007.
- Cranswick, R. H. and Cook, P. G.: Scales and magnitude of hyporheic, river-aquifer and bank storage exchange fluxes, *Hydrol. Proc.*, 29, 3084–3097, 2015.
- D’angelo, D., Webster, J., Gregory, S., and Meyer, J.: Transient storage in Appalachian and Cascade mountain streams as related to hydraulic characteristics, *J. N. Am. Benthol. Soc.*, 12, 223–235, 1993.
- Daniluk, T. L., Lautz, L. K., Gordon, R. P., and Endreny, T. A.: Surface water-groundwater interaction at restored streams and associated reference reaches, *Hydrol. Proc.*, 27, 3730–3746, 2013.
- Datry, T., Boulton, A. J., Bonada, N., Fritz, K., Leigh, C., Sauquet, E., Tockner, K., Hugué, B., and Dahm, C. N.: Flow intermittence and ecosystem services in rivers of the Anthropocene, *J. Appl. Ecol.*, 55, 353–364, <https://doi.org/10.1111/1365-2664.1294>, 2017.
- Davidson, S. L. and Eaton, B. C.: Modeling channel morphodynamic response to variations in large wood: Implications for stream rehabilitation in degraded watersheds, *Geomorphology*, 202, 59–73, 2013.

- Dent, C. L., Grimm, N. B., and Fisher, S. G.: Multiscale effects of surface-subsurface exchange on stream water nutrient concentrations, *J. N. Am. Benthol. Soc.*, 20, 162–181, 2001.
- Drummond, J., Larsen, L., González-Pinzón, R., Packman, A., and Harvey, J.: Fine particle retention within stream storage areas at baseflow and in response to a storm event, *Water Resour. Res.*, 53, 5690–5705, <https://doi.org/10.1002/2016WR020202>, 2017.
- Dudley-Southern, M. and Binley, A.: Temporal responses of groundwater-surface water exchange to successive storm events, *Water Resour. Res.*, 51, 1112–1126, 2015.
- Duke, J. R., White, J., Allen, P. M., and Muttiah, R.: Riparian influence on hyporheic-zone formation downstream of a small dam in the Blackland Prairie region of Texas, *Hydrol. Proc.*, 21, 141–150, 2007.
- Elliott, A. H. and Brooks, N. H.: Transfer of nonsorbing solutes to a streambed with bed forms: Theory, *Water Resour. Res.*, 33, 123–136, 1997.
- Ellis, P. A., Mackay, R., and Rivett, M. O.: Quantifying urban river-aquifer fluid exchange processes: A multi-scale problem, *J. Contam. Hydrol.*, 91, 58–80, <https://doi.org/10.1016/j.jconhyd.2006.08.014>, 2007.
- Emanuel, R. E., Hazen, A. G., McGlynn, B. L., and Jencso, K. G.: Vegetation and topographic influences on the connectivity of shallow groundwater between hillslopes and streams, *Ecology*, 7, 887–895, 2014.
- Ensign, S. H. and Doyle, M. W.: In-channel transient storage and associated nutrient retention: Evidence from experimental manipulations, *Limnol. Ocean.*, 50, 1740–1751, 2005.
- Fanelli, R. M. and Lautz, L. K.: Patterns of water, heat, and solute flux through streambeds around small dams, *Groundwater*, 46, 671–687, 2008.
- Fox, A., Boano, F., and Arnon, S.: Impact of losing and gaining streamflow conditions on hyporheic exchange fluxes induced by dune-shaped bed forms, *Water Resour. Res.*, 50, 1895–1907, 2014.
- Fox, A., Laube, G., Schmidt, C., Fleckenstein, J. H., and Arnon, S.: The effect of losing and gaining flow conditions on hyporheic exchange in heterogeneous streambeds, *Water Resour. Res.*, 52, 7460–7477, 2016.
- Freer, J., McDonnell, J. J., Beven, K. J., Peters, N. E., Burns, D. A., Hooper, R. P., Aulenbach, B., and Kendall, C.: The role of bedrock topography on subsurface storm flow, *Water Resour. Res.*, 38, 5–1, <https://doi.org/10.1029/2001WR000872>, 2002.
- Fritz, B. G. and Arntzen, E. V.: Effect of rapidly changing river stage on uranium flux through the hyporheic zone, *Groundwater*, 45, 753–760, 2007.
- Fryirs, K. A., Wheaton, J. M., and Brierley, G. J.: An approach for measuring confinement and assessing the influence of valley setting on river forms and processes, *Earth Surf. Proc. Land.*, 41, 701–710, 2016.
- Fuller, R. M., Smith, G. M., Sanderson, J. M., Hill, R. A., Thomson, A. G., Cox, R., Brown, N. J., Clarke, R. T., Rothery, P., and Gerard, F. F.: Countryside Survey 2000 Module 7. Land Cover Map 2000, Final Report, 2002.
- Gariglio, F. P., Tonina, D., and Luce, C. H.: Spatiotemporal variability of hyporheic exchange through a pool-riffle-pool sequence, *Water Resour. Res.*, 49, 7185–7204, 2013.
- Gerecht, K. E., Cardenas, M. B., Guswa, A. J., Sawyer, A. H., Nowinski, J. D., and Swanson, T. E.: Dynamics of hyporheic flow and heat transport across a bed-to-bank continuum in a large regulated river, *Water Resour. Res.*, 47, <https://doi.org/10.1029/2010WR009794>, 2011.
- Godsey, S. E.: Dynamic, discontinuous stream networks: hydrologically driven variations in active drainage density, flowing channels and stream order, *Hydrol. Proc.*, 5803, 5791–5803, 2014.
- Gomez, J. D., Wilson, J. L., and Cardenas, M. B.: Residence time distributions in sinuosity-driven hyporheic zones and their biogeochemical effects, *Water Resour. Res.*, 48, <https://doi.org/10.1029/2012WR012180>, 2012.
- Gomez-Velez, J. D. and Harvey, J. W.: A hydrogeomorphic river network model predicts where and why hyporheic exchange is important in large basins, *Geophys. Res. Lett.*, 41, 6403–6412, 2014.
- Gomez-Velez, J. D., Harvey, J. W., Cardenas, M. B., and Kiel, B.: Denitrification in the Mississippi River network controlled by flow through river bedforms, *Nat. Geosci.*, 8, 941–945, 2015.
- Gomi, T., Sidle, R. C., and Richardson, J. S.: Understanding Processes and Downstream Linkages of Headwater Systems, *BioScience*, 52, 905, [https://doi.org/10.1641/0006-3568\(2002\)052\[0905:UPADLO\]2.0.CO;2](https://doi.org/10.1641/0006-3568(2002)052[0905:UPADLO]2.0.CO;2), 2002.
- Gooseff, M. N., Anderson, J. K., Wondzell, S. M., LaNier, J., and Haggerty, R.: A modelling study of hyporheic exchange pattern and the sequence, size, and spacing of stream bedforms in mountain stream networks, Oregon, USA, *Hydrol. Proc.*, 20, 2443–2457, 2006.
- Gooseff, M. N., Hall, R. O., and Tank, J. L.: Relating transient storage to channel complexity in streams of varying land use in Jackson Hole, Wyoming, *Water Resour. Res.*, 43, W01417, <https://doi.org/10.1029/2005WR004626>, 2007.
- Gordon, R. P., Lautz, L. K., and Daniluk, T. L.: Spatial patterns of hyporheic exchange and biogeochemical cycling around cross-vane restoration structures: Implications for stream restoration design, *Water Resour. Res.*, 49, 2040–2055, 2013.
- Graham, C. B., Van Verseveld, W., Barnard, H. R., and McDonnell, J. J.: Estimating the deep seepage component of the hillslope and catchment water balance within a measurement uncertainty framework, *Hydrol. Proc.*, 24, 3631–3647, 2010.
- Grapes, T. R., Bradley, C., and Pettis, G. E.: Dynamics of river-aquifer interactions along a chalk stream: the River Lambourn, UK, *Hydrol. Proc.*, 19, 2035–2053, 2005.
- Gregory, S., Boyer, K. L., Gurnell, A. M., et al.: The ecology and management of wood in world rivers, American Fisheries Society Bethesda, Maryland, 2003.
- Gregory, S. V., Swanson, F. J., McKee, W. A., and Cummins, K. W.: An ecosystem perspective of riparian zones, *BioScience*, 41, 540–551, 1991.
- Griffiths, J., Binley, A., Crook, N., Nutter, J., Young, A., and Fletcher, S.: Streamflow generation in the Pang and Lambourn catchments, Berkshire, UK, *J. Hydrol.*, 330, 71–83, 2006.
- Grimm, N. B., Sheibley, R. W., Crenshaw, C. L., Dahm, C. N., John, W., Zeglin, L. H., Roach, W. J., and Zeglin, L. H.: N retention and transformation in urban streams, *J. N. Am. Benthol. Soc.*, 24, 626–642, 2005.
- Groffman, P. M., Dorsey, A. M., and Mayer, P. M.: N processing within geomorphic structures in urban streams, *J. N. Am. Benthol. Soc.*, 24, 613, <https://doi.org/10.1899/04-026.1>, 2005.

- Gurnell, A. M., Rinaldi, M., Belletti, B., Bizzi, S., Blamauer, B., Braca, G., Buijse, A., Bussettini, M., Camenen, B., Comiti, F., et al.: A multi-scale hierarchical framework for developing understanding of river behaviour to support river management, *Aquat. Sci.*, 78, 1–16, 2016.
- Han, B. and Endreny, T. A.: Spatial and temporal intensification of lateral hyporheic flux in narrowing intra-meander zones, *Hydrol. Proc.*, 27, 989–994, 2013.
- Hancock, P. J.: Human impacts on the stream–groundwater exchange zone, *Environ. Manage.*, 29, 763–781, 2002.
- Hannah, D. M., Malcolm, I. A., and Bradley, C.: Seasonal hyporheic temperature dynamics over riffle bedforms, *Hydrol. Proc.*, 23, 2178–2194, 2009.
- Hartwig, M. and Borchardt, D.: Alteration of key hyporheic functions through biological and physical clogging along a nutrient and fine-sediment gradient, *Ecohydrology*, 8, 961–975, 2015.
- Harvey, J. and Gooseff, M.: River corridor science: Hydrologic exchange and ecological consequences from bedforms to basins, *Water Resour. Res.*, 51, 6893–6922, 2015.
- Harvey, J. W. and Bencala, K. E.: The effect of streambed topography on surface–subsurface water exchange in mountain catchments, *Water Resour. Res.*, 29, 89–98, 1993a.
- Harvey, J. W. and Bencala, K. E.: The effect of streambed topography on surface–subsurface water exchange in mountain catchments, *Water Resour. Res.*, 29, 89–98, 1993b.
- Harvey, J. W. and Wagner, B. J.: Quantifying hydrologic interactions between streams and their subsurface hyporheic zones, Vol. Streams an, 3–44, Academic Press, 2000.
- Harvey, J. W., Conklin, M. H., and Koelsch, R. S.: Predicting changes in hydrologic retention in an evolving semi-arid alluvial stream, *Adv. Water Res.*, 26, 939–950, 2003.
- Hassan, M. A., Tonina, D., Beckie, R. D., and Kinnear, M.: The effects of discharge and slope on hyporheic flow in step-pool morphologies, *Hydrol. Proc.*, 29, 419–433, 2015.
- Heppell, C. M., Wharton, G., Cotton, J., Bass, J., and Roberts, S.: Sediment storage in the shallow hyporheic of lowland vegetated river reaches, *Hydrol. Proc.*, 23, 2239–2251, 2009.
- Hester, E. T. and Doyle, M. W.: In-stream geomorphic structures as drivers of hyporheic exchange, *Water Resour. Res.*, 44, <https://doi.org/10.1029/2006WR005810>, 2008.
- Hester, E. T., Doyle, M. W., and Piehler, M. F.: Impact of Geomorphic Structures on Hyporheic Exchange, Temperature, and Ecological Processes in Streams, Population (English Edition), 2008.
- Hester, E. T., Doyle, M. W., and Poole, G. C.: The influence of in-stream structures on summer water temperatures via induced hyporheic exchange, *Limnol. Oceanogr.*, 54, 355–367, 2009.
- Hester, E. T., Young, K. I., and Widdowson, M. A.: Mixing of surface and groundwater induced by riverbed dunes: Implications for hyporheic zone definitions and pollutant reactions, *Water Resour. Res.*, 49, 5221–5237, 2013.
- Hester, E. T., Hammond, B., and Scott, D. T.: Effects of inset floodplains and hyporheic exchange induced by in-stream structures on nitrate removal in a headwater stream, *Ecol. Eng.*, 97, 452–464, 2016.
- Hiscock, K.: *Hydrogeology: Principles and Practice*, Blackwell publishing, Oxford, 2007.
- Hoagland, B., Russo, T. A., Gu, X., Hill, L., Kaye, J., Forsythe, B., and Brantley, S. L.: Hyporheic zone influences on concentration–discharge relationships in a headwater sandstone stream, *Water Resour. Res.*, <https://doi.org/10.1002/2016WR019717>, 2017.
- Holmes, R. M., Jones, J. B., Fisher, S. G., and Grimm, N. B.: Denitrification in a nitrogen-limited stream ecosystem, *Biogeochemistry*, 33, 125–146, 1996.
- Ibrahim, T. G., Thornton, S. F., and Wainwright, J.: Interplay of geomorphic and hydrogeologic features at reach- and channel unit-scales on riverbed hydrology and hydrochemistry: a conceptual model in the Lower Coal Measures, South Yorkshire, UK, *Hydrogeol. J.*, 18, 1391–1411, 2010.
- Irvine, D. J., Cranswick, R. H., Simmons, C. T., Shanafield, M. A., and Lautz, L. K.: The effect of streambed heterogeneity on groundwater–surface water exchange fluxes inferred from temperature time series, *Water Resour. Res.*, 2108–2123, <https://doi.org/10.1002/2014WR015769>, 2014.
- Iturbe, I. R. and Porporato, A.: *Ecohydrology of Water-controlled Ecosystems: Soil Moisture and Plant Dynamics*, Cambridge University Press, 2004.
- Janssen, F., Cardenas, M. B., Sawyer, A. H., Dammrich, T., Krietsch, J., and Beer, D.: A comparative experimental and multiphysics computational fluid dynamics study of coupled surface–subsurface flow in bed forms, *Water Resour. Res.*, 48, <https://doi.org/10.1029/2012WR011982>, 2012.
- Jasechko, S., Kirchner, J. W., Welker, J. M., and McDonnell, J. J.: Substantial proportion of global streamflow less than three months old, *Nat. Geosci.*, 9, 126–129, 2016.
- Jeffries, R., Darby, S. E., and Sear, D. A.: The influence of vegetation and organic debris on flood-plain sediment dynamics: case study of a low-order stream in the New Forest, England, *Geomorphology*, 51, 61–80, 2003.
- Jencso, K. G. and McGlynn, B. L.: Hierarchical controls on runoff generation: Topographically driven hydrologic connectivity, geology, and vegetation, *Water Resour. Res.*, 47, <https://doi.org/10.1029/2011WR010666>, 2011.
- Jencso, K. G., McGlynn, B. L., Gooseff, M. N., Wondzell, S. M., Bencala, K. E., and Marshall, L. a.: Hydrologic connectivity between landscapes and streams: Transferring reach- and plot-scale understanding to the catchment scale, *Water Resour. Res.*, 45, 1–16, 2009.
- Jencso, K. G., McGlynn, B. L., Gooseff, M. N., Bencala, K. E., and Wondzell, S. M.: Hillslope hydrologic connectivity controls riparian groundwater turnover: Implications of catchment structure for riparian buffering and stream water sources, *Water Resour. Res.*, 46, <https://doi.org/10.1029/2009WR008818>, 2010.
- Jin, L., Siegel, D. I., Lautz, L. K., and Otz, M. H.: Transient storage and downstream solute transport in nested stream reaches affected by beaver dams, *Hydrol. Proc.*, 23, 2438–2449, 2009.
- Jones, K. L., Poole, G. C., Woessner, W. W., Vitale, M. V., Boer, B. R., O’Daniel, S. J., Thomas, S. A., and Geffen, B. A.: Geomorphology, hydrology, and aquatic vegetation drive seasonal hyporheic flow patterns across a gravel-dominated floodplain, *Hydrol. Proc.*, 22, 2105–2113, 2008.
- Kasahara, T. and Hill, A. R.: Hyporheic exchange flows induced by constructed riffles and steps in lowland streams in southern Ontario, Canada, *Hydrol. Proc.*, 20, 4287–4305, 2006.
- Kasahara, T. and Wondzell, S. M.: Geomorphic controls on hyporheic exchange flow in mountain streams, *Water Resour. Res.*, 39, <https://doi.org/10.1029/2002WR001386>, 2003.

- Kiel, B. a. and Bayani Cardenas, M.: Lateral hyporheic exchange throughout the Mississippi River network, *Nat. Geosci.*, 7, 413–417, 2014.
- Kjellin, J., Hallin, S., and Wörman, A.: Spatial variations in denitrification activity in wetland sediments explained by hydrology and denitrifying community structure, *Water Res.*, 41, 4710–4720, 2007.
- Krause, S., Hannah, D., Fleckenstein, J., Heppell, C., Kaeser, D., Pickup, R., Pinay, G., Robertson, A., and Wood, P.: Interdisciplinary perspectives on processes in the hyporheic zone, *Ecohydrology*, 4, 481–499, 2011a.
- Krause, S., Hannah, D. M., and Blume, T.: Interstitial pore-water temperature dynamics across a pool-riffle-pool sequence, *Ecohydrology*, 4, 549–563, 2011b.
- Krause, S., Munz, M., Tecklenburg, C., and Binley, A.: The effect of groundwater forcing on hyporheic exchange: Reply to comment on “Reducing monitoring gaps at the aquifer-river interface by modelling groundwater-surfacewater exchange flow patterns” edited by: Munz, M., Krause, S., Tecklenburg, C., and Binley, A., *Hydrol. Proc.*, 26, 1589–1592, 2012.
- Krause, S., Tecklenburg, C., Munz, M., and Naden, E.: Streambed nitrogen cycling beyond the hyporheic zone: Flow controls on horizontal patterns and depth distribution of nitrate and dissolved oxygen in the upwelling groundwater of a lowland river, *J. Geophys. Res.-Biogeo.*, 118, 54–67, 2013.
- Krause, S., Klaar, M., Hannah, D., Mant, J., Bridgeman, J., Trimmer, M., and Manning-Jones, S.: The potential of large woody debris to alter biogeochemical processes and ecosystem services in lowland rivers, *Wiley Interdisciplinary Reviews: Water*, 1, 263–275, 2014.
- Kunz, J. V., Annable, M. D., Rao, S., Rode, M., and Borchardt, D.: Hyporheic passive flux meters reveal inverse vertical zonation and high seasonality of nitrogen processing in an anthropogenically modified stream (Holtemme, Germany), *Water Resour. Res.*, 53, 10155–10172, 2017.
- Laenen, A. and Bencala, K. E.: Transient storage assessments of dye-tracer injections in rivers of the Willamette Basin, Oregon, *J. Am. Water Resour. Assoc.*, 37, 367–377, 2001.
- Lapworth, D. J., Goody, D. C., Allen, D., and Old, G. H.: Understanding groundwater, surface water, and hyporheic zone biogeochemical processes in a Chalk catchment using fluorescence properties of dissolved and colloidal organic matter, *J. Geophys. Res.-Biogeo.*, 114, <https://doi.org/10.1029/2009JG000921>, 2009.
- Larkin, R. G. and Sharp, J. M.: On the relationship between river-basin geomorphology, aquifer hydraulics, and ground-water flow direction in alluvial aquifers, *Geol. Soc. Am. Bull.*, 104, 1608–1620, 1992.
- Larsen, L. G., Harvey, J. W., and Maglio, M. M.: Dynamic hyporheic exchange at intermediate timescales: Testing the relative importance of evapotranspiration and flood pulses, *Water Resour. Res.*, 50, 318–335, 2014.
- Latterell, J. J., Scott Bechtold, J., O’KEEFE, T. C., Pelt, R., and Naiman, R. J.: Dynamic patch mosaics and channel movement in an unconfined river valley of the Olympic Mountains, *Freshwater Biol.*, 51, 523–544, 2006.
- Laudon, H., Sjöblom, V., Buffam, I., Seibert, J., and Mörth, M.: The role of catchment scale and landscape characteristics for runoff generation of boreal streams, *J. Hydrol.*, 344, 198–209, 2007.
- Lautz, L. K. and Fanelli, R. M.: Seasonal biogeochemical hotspots in the streambed around restoration structures, *Biogeochemistry*, 91, 85–104, 2008.
- Lautz, L. K., Siegel, D. I., and Bauer, R. L.: Impact of debris dams on hyporheic interaction along a semi-arid stream, *Hydrol. Proc.*, 20, 183–196, 2006.
- Loheide, S. P. and Lundquist, J. D.: Snowmelt-induced diel fluxes through the hyporheic zone, *Water Resour. Res.*, 45, <https://doi.org/10.1029/2008WR007329>, 2009.
- Magliozzi, C., Coro, G., Grabowski, R., Packman, A. I., and Krause, S.: A multiscale statistical method to identify potential areas of hyporheic exchange for river restoration planning, *Environmental Modelling & Software*, 2018.
- Malard, F., Tockner, K., Dole-Olivier, M.-J., and Ward, J. V.: A landscape perspective of surface–subsurface hydrological exchanges in river corridors, *Freshwater Biol.*, 47, 621–640, 2002.
- Malcolm, I., Soulsby, C., Youngson, F., and Hannah, D. M.: Catchment-scale controls on groundwater-surface water interactions in the hyporheic zone: Implications for salmon embryo survival, *River Res. Appl.*, 21, 977–989, 2005.
- Malcolm, I. A., Soulsby, C., Youngson, A. F., Hannah, D. M., McLaren, I. S., and Thorne, A.: Hydrological influences on hyporheic water quality: implications for salmon egg survival, *Hydrol. Proc.*, 18, 1543–1560, 2004.
- Malzone, J. M., Anseeuw, S. K., Lowry, C. S., and Allen-King, R.: Temporal Hyporheic Zone Response to Water Table Fluctuations, *Groundwater*, 54, 274–285, 2015.
- Malzone, J. M., Lowry, C., and Ward, A. S.: Response of the hyporheic zone to transient groundwater fluctuations on the annual and storm event time scales, *Water Resour. Res.*, 52, 5301–5321, 2016.
- Marion, A., Bellinello, M., Guymer, I., and Packman, A.: Effect of bed form geometry on the penetration of nonreactive solutes into a streambed, *Water Resour. Res.*, 38, 27-1, <https://doi.org/10.1029/2001WR000264>, 2002.
- Marion, A., Zaramella, M., and Bottacin-Busolin, A.: Solute transport in rivers with multiple storage zones: The STIR model, *Water Resour. Res.*, 44, <https://doi.org/10.1029/2008WR007037>, 2008.
- Marklund, L., Wörman, A., Geier, J., Simic, E., and Dverstorp, B.: Impact of landscape topography and Quaternary overburden on the performance of a geological repository of nuclear waste, *Nuclear Technol.*, 163, 165–179, 2008.
- Martinet, M. C., Vivoni, E. R., Cleverly, J. R., Thibault, J. R., Schuetz, J. F., and Dahm, C. N.: On groundwater fluctuations, evapotranspiration, and understory removal in riparian corridors, *Water Resour. Res.*, 45, <https://doi.org/10.1029/2008WR007152>, 2009.
- Marzadri, A., Tonina, D., Bellin, A., Vignoli, G., and Tubino, M.: Semianalytical analysis of hyporheic flow induced by alternate bars, *Water Resour. Res.*, 46, <https://doi.org/10.1029/2009WR008285>, 2010.
- McDonnell, J. J., Freer, J., Hooper, R., Kendall, C., Burns, D., Beven, K., and Peters, J.: New method developed for studying flow on hillslopes, EOS, *Transactions American Geophysical Union*, 77, 465–472, 1996.
- McDonnell, J. J., Woods, R., and Rowe, L.: Comment on “The changing spatial variability of subsurface flow across a hillside” by Ross Woods and Lindsay Rowe, *J. Hydrol.*, 36, 97–100, 1997.



- Menichino, G. T. and Hester, E. T.: Hydraulic and thermal effects of in-stream structure-induced hyporheic exchange across a range of hydraulic conductivities, *Water Resour. Res.*, 50, 4643–4661, 2014.
- Merill, L. and Tonjes, D. J.: A Review of the Hyporheic Zone, Stream Restoration, and Means to Enhance Denitrification, *Crit. Rev. Environ. Sci. Technol.*, 44, 2337–2379, 2014.
- Millington, C. E. and Sear, D. A.: Impacts of river restoration on small-wood dynamics in a low-gradient headwater stream, *Earth Surf. Proc. Landf.*, 32, 1204–1218, 2007.
- Minshall, G. W., Cummins, K. W., Petersen, R. C., Cushing, C. E., Bruns, D. A., Sedell, J. R., and Vannote, R. L.: Developments in stream ecosystem theory, *Can. J. Fish. Aquat. Sci.*, 42, 1045–1055, 1985.
- Moninix, S., Termes, P., and Tromp, G.: Management discharge peaks necessary to avoid problems with the Overijsselse Vecht, H<sub>2</sub>O, in Dutch, 23, 44–47, 2006.
- Morrice, J. A., Valett, H. M., Dahm, C. N., and Campana, M. E.: Alluvial Characteristics, Groundwater–Surface Water Exchange and Hydrological Retention in Headwater Streams, *Hydrol. Proc.*, 11, 253–267, 1997.
- Mutz, M.: Influences of woody debris on flow patterns and channel morphology in a low energy, sand-bed stream reach, *International Review of Hydrobiology*, 85, 107–121, 2000.
- Mutz, M., Kalbus, E., and Meinecke, S.: Effect of instream wood on vertical water flux in low-energy sand bed flume experiments, *Water Resour. Res.*, 43, 1–10, 2007.
- Naiman, R. J., Bilby, R. E., and Bisson, P. a.: Riparian Ecology and Management in the Pacific Coastal Rain Forest, *BioScience*, 50, 996–1011, [https://doi.org/10.1641/0006-3568\(2000\)050\[0996:REAMIT\]2.0.CO;2](https://doi.org/10.1641/0006-3568(2000)050[0996:REAMIT]2.0.CO;2), 2000.
- Nanson, G. C. and Croke, J. C.: A genetic classification of floodplains, *Geomorphology*, 4, 459–486, 1992.
- Newbold, J. D., Elwood, J. W., O'Neill, R. V., and Winkle, W. V.: Measuring nutrient spiralling in streams, *Can. J. Fish. Aquat. Sci.*, 38, 860–863, 1981.
- Newbold, J. D., O'Neill, R. V., Elwood, J. W., and Van Winkle, W.: Nutrient spiralling in streams: implications for nutrient limitation and invertebrate activity, *The American Naturalist*, 120, 628–652, 1982.
- Nippen, F., McGlynn, B. L., and Emanuel, R. E.: The spatial and temporal evolution of contributing areas, *Water Resour. Res.*, 51, 4550–4573, 2015.
- Orghidan, T.: Ein neuer Lebensraum des unterirdischen Wassers: der hyporheische Biotop, *Arch. Hydrobiol.*, 55, 392–414, 1959.
- Osei, N. A., Gurnell, A. M., and Harvey, G. L.: The role of large wood in retaining fine sediment, organic matter and plant propagules in a small, single-thread forest river, *Geomorphology*, 235, 77–87, 2015a.
- Osei, N. A., Harvey, G. L., and Gurnell, A. M.: The early impact of large wood introduction on the morphology and sediment characteristics of a lowland river, *Limnologia-Ecology and Management of Inland Waters*, 54, 33–43, 2015b.
- Oxtobee, J. P. a. and Novakowski, K.: A field investigation of groundwater/surface water interaction in a fractured bedrock environment, *J. Hydrol.*, 269, 169–193, 2002.
- Packman, A. I. and MacKay, J. S.: Interplay of stream-subsurface exchange, clay particle deposition, and streambed evolution, *Water Resour. Res.*, 39, <https://doi.org/10.1029/2002WR001432>, 2003.
- Packman, A. I., Salehin, M., and Zaramella, M.: Hyporheic Exchange with Gravel Beds: Basic Hydrodynamic Interactions and Bedform-Induced Advective Flows, *J. Hydraul. Eng.*, 130, 647–656, 2004.
- Parker, C., Henshaw, A. J., Harvey, G. L., and Sayer, C. D.: Reintroduced large wood modifies fine sediment transport and storage in a lowland river channel, *Earth Surf. Proc. Landf.*, 42, 1693–1703, 2017.
- Penna, D., van Meerveld, H. J., Zuecco, G., Dalla Fontana, G., and Borga, M.: Hydrological response of an Alpine catchment to rainfall and snowmelt events, *J. Hydrol.*, 537, 382–397, 2016.
- Peralta-Maraver, I., Reiss, J., and Robertson, A. L.: Interplay of hydrology, community ecology and pollutant attenuation in the hyporheic zone, *Sci. Tot. Environ.*, 610–611, 267–275, 2018.
- Phillips, J. D.: Log-jams and avulsions in the San Antonio River Delta, Texas, *Earth Surf. Proc. Landf.*, 37, 936–950, 2012.
- Piégay, H. and Gurnell, A.: Large woody debris and river geomorphological pattern: examples from SE France and S. England, *Geomorphology*, 19, 99–116, 1997.
- Piégay, H. and Marston, R. A.: Distribution of large woody debris along the outer bend of meanders in the Ain River, France, *Phys. Geogr.*, 19, 318–340, 1998.
- Pinder, G. F. and Sauer, S. P.: Numerical simulation of flood wave modification due to bank storage effects, *Water Resour. Res.*, 7, 63–70, 1971.
- Poole, G. C. and Berman, C. H.: An Ecological Perspective on In-Stream Temperature: Natural Heat Dynamics and Mechanisms of Human-Caused Thermal Degradation, *Environ. Manage.*, 27, 787–802, 2001.
- Porporato, A., Daly, E., and Rodriguez-Iturbe, I.: Soil water balance and ecosystem response to climate change, *The American Naturalist*, 164, 625–632, 2004.
- Pretty, J. L., Hildrew, A. G., and Trimmer, M.: Nutrient dynamics in relation to surface-subsurface hydrological exchange in a groundwater fed chalk stream, *J. Hydrol.*, 330, 84–100, 2006.
- Pryshlak, T. T., Sawyer, A. H., Stonedahl, S. H., and Soltanian, M. R.: Multiscale hyporheic exchange through strongly heterogeneous sediments, *Water Resour. Res.*, 51, 9127–9140, 2015.
- Rana, S. M., Scott, D. T., and Hester, E. T.: Effects of in-stream structures and channel flow rate variation on transient storage, *J. Hydrol.*, 548, 157–169, 2017.
- Revelli, R., Boano, F., Camporeale, C., and Ridolfi, L.: Intra-meander hyporheic flow in alluvial rivers, *Water Resour. Res.*, 44, 1–10, 2008.
- Rinderer, M., Meerveld, I., Stähli, M., and Seibert, J.: Is groundwater response timing in a pre-alpine catchment controlled more by topography or by rainfall?, *Hydrol. Proc.*, 30, 1036–1051, 2016.
- Ryan, R. J., Welty, C., and Larson, P. C.: Variation in surface water-groundwater exchange with land use in an urban stream, *J. Hydrol.*, 392, 1–11, 2010.
- Salehin, M., Packman, A. I., and Wörman, A.: Comparison of transient storage in vegetated and unvegetated reaches of a small agricultural stream in Sweden: seasonal variation and anthropogenic manipulation, *Adv. Water Res.*, 26, 951–964, 2003.
- Salehin, M., Packman, A. I., and Paradis, M.: Hyporheic exchange with heterogeneous streambeds: Laboratory ex-

- periments and modeling, *Water Resour. Res.*, W11504, <https://doi.org/10.1029/2003WR002567>, 2004.
- Santos, R. G., Sturaro, J. R., Marques, M. L., and de Faria, T. T.: GIS Applied to the Mapping of Land Use, Land Cover and Vulnerability in the Outcrop Zone of the Guarani Aquifer System, *Proc. Earth Planet. Sci.*, 15, 553–559, 2015.
- Sawyer, A. H. and Cardenas, M. B.: Hyporheic flow and residence time distributions in heterogeneous cross-bedded sediment, *Water Resour. Res.*, 45, 2009.
- Sawyer, A. H. and Cardenas, M. B.: Effect of experimental wood addition on hyporheic exchange and thermal dynamics in a losing meadow stream, *Water Resour. Res.*, 48, 1–11, 2012.
- Sawyer, A. H., Cardenas, M. B., Bomar, A., and Mackey, M.: Impact of dam operations on hyporheic exchange in the riparian zone of a regulated river, *Hydrol. Proc.*, 23, 2129–2137, 2009.
- Sawyer, A. H., Bayani Cardenas, M., and Buttle, J.: Hyporheic temperature dynamics and heat exchange near channel-spanning logs, *Water Resour. Res.*, 48, <https://doi.org/10.1029/2011WR011200>, 2012.
- Schade, J. D., Marti, E., Welter, J. R., Fisher, S. G., and Grimm, N. B.: Sources of nitrogen to the riparian zone of a desert stream: implications for riparian vegetation and nitrogen retention, *Ecosystems*, 5, 68–79, 2002.
- Schade, J. D., Welter, J. R., Marti, E., and Grimm, N.: Hydrologic exchange and N uptake by riparian vegetation in an arid-land stream, *J. N. Am. Benthol. Soc.*, 24, 19–28, 2005.
- Schmadel, N. M., Ward, A. S., Lowry, C. S., and Malzone, J. M.: Hyporheic exchange controlled by dynamic hydrologic boundary conditions, *Geophys. Res. Lett.*, 1–10, <https://doi.org/10.1002/2016GL068286>, 2016.
- Schmadel, N. M., Ward, A. S., and Wondzell, S. M.: Hydrologic controls on hyporheic exchange in a headwater mountain stream, *Water Resour. Res.*, 6260–6278, <https://doi.org/10.1002/2017WR020576>, 2017.
- Sear, D., Armitage, P., and Dawson, F.: Groundwater dominated rivers, *Hydrol. Proc.*, 13, 255–276, 1999.
- Sear, D. a., Millington, C. E., Kitts, D. R., and Jeffries, R.: Log-jam controls on channel:floodplain interactions in wooded catchments and their role in the formation of multi-channel patterns, *Geomorphology*, 116, 305–319, 2010.
- Stanford, J. A. and Ward, J. V.: An Ecosystem Perspective of Alluvial Rivers: Connectivity and the Hyporheic Corridor, *J. N. Am. Benthol. Soc.*, 12, 48–60, 1993.
- Stofleth, J., Shields, D. J., and Fox, G.: Hyporheic and total transient storage in small, sand-bed streams, *Hydrol. Proc.*, 22, 1885–1894, 2008.
- Stonedahl, S. H., Harvey, J. W., Wörman, A., Salehin, M., and Packman, A. I.: A multiscale model for integrating hyporheic exchange from ripples to meanders, *Water Resour. Res.*, 46, <https://doi.org/10.1029/2009WR008865>, 2010.
- Stonedahl, S. H., Harvey, J. W., Detty, J., Aubeneau, A., and Packman, A. I.: Physical controls and predictability of stream hyporheic flow evaluated with a multiscale model, *Water Resour. Res.*, 48, 1–15, 2012.
- Stonedahl, S. H., Harvey, J. W., and Packman, A. I.: Interactions between hyporheic flow produced by stream meanders, bars, and dunes, *Water Resour. Res.*, 49, 5450–5461, 2013.
- Stonedahl, S. H., Roche, K. R., Stonedahl, F., and Packman, A. I.: Visualizing Hyporheic Flow Through Bedforms Using Dye Experiments and Simulation, *J. Visual. Exp.*, 1–10, 2015.
- Stonedahl, S. H., Sawyer, A. H., Stonedahl, F., Reiter, C., and Gibson, C.: Effect of Heterogeneous Sediment Distributions on Hyporheic Flow in Physical and Numerical Models, *Groundwater*, 2018.
- Storey, R. G., Howard, K. W. F., and Williams, D. D.: Factors controlling riffle-scale hyporheic exchange flows and their seasonal changes in a gaining stream: A three-dimensional groundwater flow model, *Water Resour. Res.*, 39, <https://doi.org/10.1029/2002WR001367>, 2003.
- Streetly, M. and Shepley, M. G.: Final report, East Shropshire Permo-Triassic sandstone groundwater modelling project-task 8, Report of the Environment Agency of England and Wales, 2005.
- Stromberg, J. C., Tiller, R., and Richter, B.: Effects of groundwater decline on riparian vegetation of semiarid regions: the San Pedro, Arizona, *Ecol. Appl.*, 6, 113–131, 1996.
- Sun, N., Yearsley, J., Voisin, N., and Lettenmaier, D. P.: A spatially distributed model for the assessment of land use impacts on stream temperature in small urban watersheds, *Hydrol. Proc.*, 29, 2331–2345, 2015.
- Swanson, T. E. and Cardenas, M. B.: Diel heat transport within the hyporheic zone of a pool-riffle-pool sequence of a losing stream and evaluation of models for fluid flux estimation using heat, *Limnol. Oceanogr.*, 55, 1741–1754, 2010.
- Tonina, D. and Buffington, J. M.: Hyporheic exchange in gravel bed rivers with pool-riffle morphology: Laboratory experiments and three-dimensional modeling, *Water Resour. Res.*, 43, 1–16, 2007.
- Tonina, D. and Buffington, J. M.: Hyporheic exchange in mountain rivers I: Mechanics and environmental effects, *Geogr. Compass*, 3, 1063–1086, 2009.
- Tonina, D. and Buffington, J. M.: Effects of stream discharge, alluvial depth and bar amplitude on hyporheic flow in pool-riffle channels, *Water Resour. Res.*, W08508, <https://doi.org/10.1029/2010WR009140>, 2011.
- Torres, M. A., West, A. J., and Clark, K. E.: Geomorphic regime modulates hydrologic control of chemical weathering in the Andes–Amazon, *Geochim. Cosmochim. Ac.*, 166, 105–128, 2015.
- Toth, J.: Cross-formational gravity-flow of groundwater: a mechanism of the transport and accumulation of petroleum (the generalized hydraulic theory of petroleum migration), 1980.
- Trauth, N., Schmidt, C., Vieweg, M., Maier, U., and Fleckenstein, J. H.: Hyporheic transport and biogeochemical reactions in pool-riffle systems under varying ambient groundwater flow conditions, *J. Geophys. Res.-Biogeo.*, 119, 910–928, 2014.
- Trauth, N., Schmidt, C., Vieweg, M., Oswald, S. E., and Fleckenstein, J. H.: Hydraulic controls of in-stream gravel bar hyporheic exchange and reactions, *Water Resour. Res.*, 51, 2243–2263, 2015.
- Vaux, W. G.: Intragravel flow and interchange of water in a streambed, *Fish. Bull.*, 66, 479–489, 1968.
- Vogt, T., Hoehn, E., Schneider, P., Freund, A., Schirmer, M., and Cirpka, O. A.: Fluctuations of electrical conductivity as a natural tracer for bank filtration in a losing stream, *Adv. Water Res.*, 33, 1296–1308, 2010.
- Walsh, C. J., Roy, A. H., Feminella, J. W., Cottingham, P. D., Groffman, P. M., and Morgan, R. P.: The urban stream syndrome: cur-

- rent knowledge and the search for a cure, *J. N. Am. Benthol. Soc.*, 24, 706–723, 2005.
- Ward, A. S.: The evolution and state of interdisciplinary hyporheic research, *Wiley Interdisciplinary Reviews: Water*, 3, 83–103, 2016.
- Ward, A. S., Fitzgerald, M., Gooseff, M. N., Voltz, T. J., Binley, A. M., and Singha, K.: Hydrologic and geomorphic controls on hyporheic exchange during base flow recession in a headwater mountain stream, *Water Resour. Res.*, 48, <https://doi.org/10.1029/2011WR011461>, 2012.
- Ward, A. S., Gooseff, M. N., Voltz, T. J., Fitzgerald, M., Singha, K., and Zarnetske, J. P.: How does rapidly changing discharge during storm events affect transient storage and channel water balance in a headwater mountain stream?, *Water Resour. Res.*, 49, 5473–5486, 2013.
- Ward, J. V. and Stanford, J. A.: The serial discontinuity concept: extending the model to floodplain rivers, *River Res. Appl.*, 10, 159–168, 1995.
- Winter, T. C.: Ground water and surface water: a single resource, DIANE Publishing Inc., 1998.
- Woessner, W. W.: Stream and fluvial plain ground water interactions: rescaling hydrogeologic thought, *Groundwater*, 38, 423–429, 2000.
- Wohl, E.: Floodplains and wood, *Earth-Sci. Rev.*, 123, 194–212, 2013.
- Wohl, E. and Cadol, D.: Neighborhood matters: patterns and controls on wood distribution in old-growth forest streams of the Colorado Front Range, USA, *Geomorphology*, 125, 132–146, 2011.
- Wohl, E., Bledsoe, B. P., Fausch, K. D., Kramer, N., Bestgen, K. R., and Gooseff, M. N.: Management of large wood in streams: an overview and proposed framework for hazard evaluation, *JAWRA Journal of the American Water Resources Association*, 52, 315–335, 2016.
- Wondzell, S. M.: Effect of morphology and discharge on hyporheic exchange flows in two small streams in the Cascade Mountains of Oregon, USA, *Hydrol. Proc.*, 20, 267–287, 2006.
- Wondzell, S. M.: The role of the hyporheic zone across stream networks, *Hydrol. Proc.*, 25, 3525–3532, 2011.
- Wondzell, S. M.: Hyporheic Zones in Mountain Streams: Physical Processes and Ecosystem Functions, *Stream Notes*, January–April, 11, 2012.
- Wondzell, S. M. and Gooseff, M. N.: Geomorphic Controls on Hyporheic Exchange Across Scales: Watersheds to Particles, *Treatise on Geomorphology*, 9, 203–218, 2013.
- Wondzell, S. M. and Swanson, F. J.: Seasonal and storm dynamics of the hyporheic zone of a 4th-order mountain stream. I: Hydrologic processes, *J. N. Am. Benthol. Soc.*, 15, 3–19, 1996.
- Wondzell, S. M., Gooseff, M. N., and McGlynn, B. L.: Flow velocity and the hydrologic behavior of streams during baseflow, *Geophys. Res. Lett.*, 34, <https://doi.org/10.1029/2007GL031256>, 2007.
- Wondzell, S. M., Gooseff, M. N., and McGlynn, B. L.: An analysis of alternative conceptual models relating hyporheic exchange flow to diel fluctuations in discharge during baseflow recession, *Hydrol. Proc.*, 24, 686–694, 2010.
- Woods, R., Sivapalan, M., and Duncan, M.: Investigating the representative elementary area concept: An approach based on field data, *Hydrol. Proc.*, 9, 291–312, 1995.
- Wörman, A. and Kronnäs, V.: Effect of pond shape and vegetation heterogeneity on flow and treatment performance of constructed wetlands, *J. Hydrol.*, 301, 123–138, 2005.
- Wörman, A., Packman, A. I., Marklund, L., Harvey, J. W., and Stone, S. H.: Exact three-dimensional spectral solution to surface-groundwater interactions with arbitrary surface topography, *Geophys. Res. Lett.*, 33, <https://doi.org/10.1029/2006GL025747>, 2006.
- Wörman, A., Packman, A. I., Marklund, L., Harvey, J. W., and Stone, S. H.: Fractal topography and subsurface water flows from fluvial bedforms to the continental shield, *Geophys. Res. Lett.*, 34, <https://doi.org/10.1029/2007GL029426>, 2007.
- Wright, K. K., Baxter, C. V., and Li, J. L.: Restricted hyporheic exchange in an alluvial river system: implications for theory and management, *Journal of the North American Benthol. Soc.*, 24, 447–460, 2005.
- Wroblicky, G. J., Campana, M. E., Valett, H. M., and Dahm, C. N.: Seasonal variation in surface-subsurface water exchange and lateral hyporheic area of two stream-aquifer systems, *Water Resour. Res.*, 34, 317–328, <https://doi.org/10.1029/97WR03285>, 1998.
- Zhou, S., Yuan, X., Peng, S., Yue, J., Wang, X., Liu, H., and Williams, D. D.: Groundwater-surface water interactions in the hyporheic zone under climate change scenarios., *Environ. Sci. Pollut. Res.*, 21, 13943–13955, 2014.
- Zimmer, M. A. and Lautz, L. K.: Temporal and spatial response of hyporheic zone geochemistry to a storm event, *Hydrol. Proc.*, 28, 2324–2337, 2014.

# Toward a conceptual framework of hyporheic exchange across spatial scales

Magliozzi, Chiara

2018-11-30

Attribution 4.0 International

---

Magliozzi C, Grabowski R, Packman AI, Krause S. (2018) Toward a conceptual framework of hyporheic exchange across spatial scales. *Hydrology and Earth System Sciences*, Volume 22, Issue 12, 2018, pp. 6163-6185

<https://doi.org/10.5194/hess-22-6163-2018>

*Downloaded from CERES Research Repository, Cranfield University*