

PUBLISHED BY

INTECH

open science | open minds

World's largest Science,
Technology & Medicine
Open Access book publisher



3,250+
OPEN ACCESS BOOKS



106,000+
INTERNATIONAL
AUTHORS AND EDITORS



111+ MILLION
DOWNLOADS



BOOKS
DELIVERED TO
151 COUNTRIES

AUTHORS AMONG

TOP 1%
MOST CITED SCIENTIST



12.2%
AUTHORS AND EDITORS
FROM TOP 500 UNIVERSITIES



Selection of our books indexed in the
Book Citation Index in Web of Science™
Core Collection (BKCI)

WEB OF SCIENCE™

Chapter from the book *Advances in Air Navigation Services*

Downloaded from: <http://www.intechopen.com/books/advances-in-air-navigation-services>

Interested in publishing with InTechOpen?
Contact us at book.department@intechopen.com

1 Probability of Potential Collision for Aircraft 2 Encounters in High Density Airspaces

3 R. Arnaldo, F.J. Sáez, E. Garcia and Y. Portillo

4 Additional information is available at the end of the chapter

5 <http://dx.doi.org/10.5772/48685>

6 1. Introduction

7 Collision risk estimation in airspace and mathematical modeling of mid-air collisions have
8 been carried out for over more than 40 years [1]. During this period there has been a
9 development of mathematical models for processes leading to possible collisions of aircraft
10 flying nearby in order to estimate the risk of collision.

11 B. L. Marks [2] developed the principles in which a collision risk model could be developed
12 in the early 1960s. Marks' work was modified and enhanced by P. Reich [3] and that model,
13 later called the Reich model, has been the basis for many of the important developments in
14 this field.

15 The Reich model uses information related to the probabilistic distributions of aircraft's
16 lateral and vertical position, traffic flows of the routes, aircraft's relative velocities and
17 aircraft dimensions to generate estimation of collision risk. However, this model does not
18 cover adequately situations where ground controllers monitor the air traffic through radar
19 surveillance and provide tactical instructions to the aircraft crews. Furthermore, the problem
20 of collision risk modeling in the analysis of "high traffic density" ATC scenarios is different
21 to that of "procedural scenarios", which have been developed by Reich [4] and Brooker [5],
22 amongst others. This is mainly due to the active role of Controllers in the first case. In this
23 case positive control is used extensively to modify the planned aircraft route. This requires
24 the inclusion in the model of "human factor response" behavior.

25 These "collision risk models" were initially applied in the 60s to determine safe separation
26 standards between pairs of aircraft flying at the same altitude on parallel courses over the
27 North Atlantic Ocean [6]. Since then, new models have been developed and continually
28 refined and improved. They have been applied for different geographic regions (USA [7],
29 European airspace [8]), for oceanic or radar [9] environments, and different flight regimes

1 (for example, high-altitude cruise and landing on close [10,11,12] and ultra close spaced
2 runways [13,14]), for specific flight phases [15] (focused for example on the separation
3 between aircraft on final approach and landing, when flight risks are greater than during
4 any other phase of flight), for different types of separation (vertical, longitudinal and lateral)
5 and also for current and future operational concepts [16], such as free flight [17], airborne
6 self separation [18],....

7 Most of these models, amongst them the formula proposed by Brooker [19] for mid-air
8 collision risk, involve the aggregation of terms comprising different factors related to: initiating
9 events which produce defective flight paths; the probability of safety defenses correcting these
10 defective flight plans; and traffic and kinematic scalars. But, as he indicates: "it does no more
11 than spell out the mechanisms by which collisions logically have to occur. The hard problem is
12 how to populate the parameters in the formulation with sensible numbers".

13 Risk models have also been developed for the estimation of conflict probability (understood
14 as the probability that the distance between a pair of aircraft becomes smaller than some
15 specified minimum separation value). Paielli and Erzberger's [20,21] emphasis was on the
16 development of algorithms to numerically evaluate approximations of conflict probabilities.
17 Prandini et al. [22,23] emphasized the analysis of the problem and distinguished three sub-
18 problems of evaluating conflict probability.

19 The main point of conflict probability is its clear relation to a well known safety criterion in
20 civil aviation: the separation minimum, which puts a requirement on the air traffic
21 management system; not to let aircraft come closer to each other than a certain minimum
22 distance. In addition to minimum separation values, ICAO (International Civil Aviation
23 Organization) has also defined limiting criteria for acceptable risk levels of fatal accident,
24 and in particular, for the risk of mid air collision [24]. The allowed probability values for
25 such events are of the order of one mid-air collision or physical crossing per 10^9 flight hour.

26 Furthermore , some effort has been also devoted to the problem of aircraft conflict detection.
27 An excellent survey of the different conflict detection and resolution schemes has been
28 carried out by Kuchar [25,26], where the conflict detection schemes are classified according
29 to the modeling method used for projecting the aircraft position in the future.

30 According to Brooker [9], mid-air collisions derived from radar inaccuracies are very rare, so
31 to estimate their frequency, it is necessary to model the factors that might lead to such
32 events. But this extremely low value makes it difficult to obtain reliable empirical results
33 from reasonably computational amount of data.

34 As collisions are very unlikely events most of the previous approaches to estimate collision
35 risk were centered on simulations techniques applicable to rare event estimations such as
36 Montecarlo simulations [27,28]. Nevertheless, simulations are not enough, as the
37 components of the collision models have to be verifiable, i.e. match reality, and cautious.
38 'Verifiable' in the present context means that the model description can be demonstrated to
39 match what happens in practice, and that most of the parameters in the model can be
40 measured directly by analyzing air traffic patterns.

1 Some authors, like Dr. L. Burt [29], have formulated expressions that attempt to estimate
2 P_a , distinguishing four different aircraft encounters geometries. The mathematical
3 formulas are customized for these geometries so they are only applicable for circumstances
4 that they have been developed for. They barely provide an estimate of the average
5 conditional probability of collision P_a but they do not provide an individual value of P_a for
6 each encounter. Therefore, this approach does not assess the severity of each individual
7 potential encounter.

8 Other authors, such as Campos [30] have calculated the probability of coincidence for
9 aircraft on arbitrary straight flight paths (either climbing, descending, or in level flight)
10 with constant speed as an upper bound for the probability of collision. Although in this
11 approach the time and distance of closest approach are used to calculate the position for
12 maximum probability of coincidence. In reference [31] same authors illustrate the
13 relationship between the aircraft RMS (Root Mean Square) position error and the
14 minimum separation distance for achieving a certain Target Level of Safety (TLS) for low
15 probability of collision.

16 Nevertheless, most of the researches on this field have just worked in the estimation of
17 probabilities of conflict (before deliberate actions are taken to solve the conflicts) and how
18 these probabilities depend on aircraft separation standards. Different current and future Air
19 Traffic Management operational concepts have been studied under this perspective in an
20 attempt to reduce aircraft separation standards [32,33] or with the aim of designing proper
21 avoidance maneuvers in order to maintain the prescribed minimum separation standards
22 among aircraft [34,35].

23 The previous considerations give an idea of the complexity of using stored aircraft tracks,
24 within a given scenario and time frame, to infer safety level, collision risk probability and
25 associated system weaknesses. In most high density airspace scenarios recorded tracks can
26 be obtained for all aircraft flying in it, for example, from Radar Data Processing systems
27 (RDP). In fact, this provides us with a robust data source, which could be used for safety
28 analysis. This could include indirect information which is closely related to the "human
29 factor response". Despite its importance not much effort have been devoted to the
30 development of risk and collision models based upon the analysis of the stored aircraft
31 tracks.

32 Furthermore, it has to be considered that the distribution of aircraft position errors over
33 their intended tracks is one of the most important factors in determining route safety, and
34 consequently it has been broadly studied. Reference [36], for instance, presents a modeling
35 technique to compute the probability density function of position errors as the aircraft
36 proceed along the route taking into account not only the time dependence, but also all the
37 factors influencing an aircraft's position errors, e.g., surveillance and navigation errors,
38 surveillance fix rate, and air traffic control procedures.

39 Following the research line initiated on [31,37,38] by the mentioned previous work, the
40 authors are developing a more detailed mathematical model for both components of
41 probability of collision in a radar ATC (Air Traffic Control) environment.

2. Fundamentals behind probability of collision estimation

Jaroslav Krystul [39] defines the risk as the probability of a particular adverse event occurring during a stated period of time. Usually, this is an event occurring when the system reaches a particular critical state. These events with a very small probability of occurrence are called rare events. Applying this definition to an ATC scenario, it is accepted that risk is closely related to those situations in which two aircraft are on conflict course and would not only pass closer than the prescribed horizontal and vertical separation minima but which would, in fact, collide.

The work presented here was originally inspired by the principle stated in [2] by B. L. Marks: "... the task of relating collision risk to a traffic configuration can be taken in two parts:

parts:

1. Determining the frequency with which aircraft are exposed to risk by passing close together; and
2. Determining what chance of collision is inherent in the passing".

According to this idea, the probability of aircraft collision can be expressed as:

$$P(\text{collision}) = FeR * P(\text{pot.coll} / \text{pot.conf}) * P(\text{coll} / \text{pot.coll}). \quad (1)$$

where:

- **FeR**, Frequency of exposition to Risk, here is considered as the relative frequency that an aircraft would potentially violate the separation standards defined for the particular situation, here referred to as potential conflict. It is easily seen that this value increases with the traffic density.
- **P(pot.coll/pot.conf)** is the conditional probability of a potential collision (pot.coll) between two aircraft that have previously violated the separation standards (pot. conf). Its value depends on the encounter kinematics and uncertainties associated to predicted positions. It represents the intrinsic severity of the encounter and it is independent of the traffic density.
- **P(coll/pot.coll)** is the conditional probability of collision among potential collisions having failed all the safety barriers (ATC, TCAS) which are in place to mitigate the risk.

A time horizon is established within which all aircraft positions are projected to explore existence of "potential conflicts". In the following discussion 10 minutes look ahead time has been considered. Accordingly, the relative frequency of potential collisions among potential conflicts $F(\text{pot.coll} / \text{pot.conf})$ could be expressed as:

$$F(\text{pot.coll} / \text{pot.conf}) = \frac{\text{Num. of pot. collisions}}{\text{Num. of pot. conflicts}} \approx E[P_a]. \quad (2)$$

where Num.pot.collisions is the number of aircraft that are about to collide (and will do if all safety barriers fail).

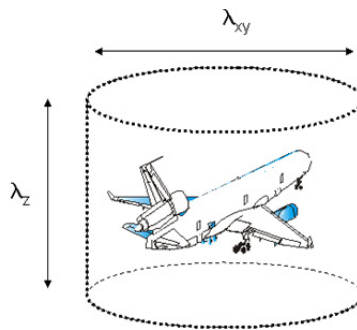
1 An initial expectation for probability of potential collision among potential conflicts, $E(P_a)$,
2 could be obtained as the relative frequency that two aircraft, on a conflict course, would not
3 only pass closer than the prescribed horizontal and vertical separation minima, but would in
4 fact collide. This expression provides an expected, or global, value and does not assess the
5 severity of each individual potential encounter itself. This chapter proposes an approach to
6 estimate the severity of the encounter using the conditional probability of a potential
7 collision P_a for each particular aircraft encounter. This proposed approach aims at
8 improving the previous works by:

- 9 • Providing an individual probability of collision for each individual encounter based
10 on the: (1) geometry and kinematics of the encounter, (2) the minimum predicted
11 lateral separation at the CPA, and (3) the minimum predicted vertical separation at
12 the CPA.
- 13 • Taking into consideration the radar data errors and the segmentation errors.

14 2.1. Consideration of aircraft protection zones

15 As stated by Ennis [41], a protected zone represents a region around a given aircraft that no
16 other aircraft should penetrate.

17 A simplification of the Bellantoni [42] approach for the definition of a collision surface can
18 be made by modelling the aircraft as a cylinder of diameter λ_{xy} and height λ_z as indicated in
19 figure 1.

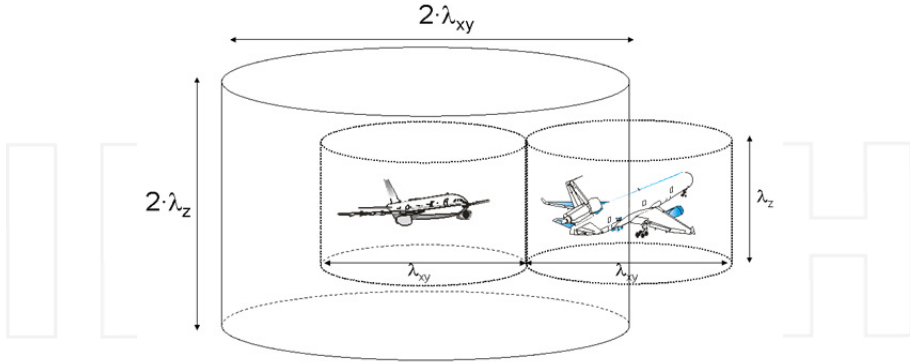


20
21 **Figure 1.** Aircraft representation

22 Two aircraft are taken as colliding if their cylinders touch. With this bounded and closed
23 airspace region representing the aircraft, a “collision cylinder” can be defined as a larger
24 cylinder of twice the dimensions represented in figure 1, and defined by height $2\lambda_z$ and
25 radius $2\lambda_{xy}$ (see figure 2).

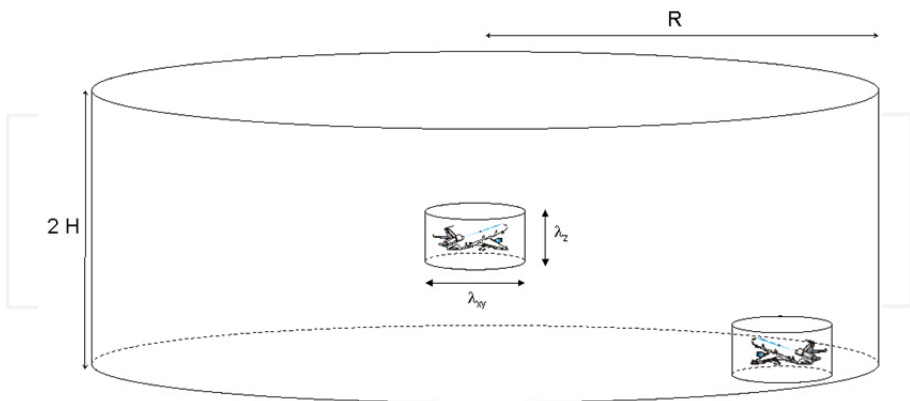
26 On the other hand, all high density traffic ATC scenarios have established minimum
27 separation standards defined by two values, the minimum horizontal (R) and vertical (H)
28 separations. When two aircraft are closer than these distances the ATC system is considered
29 to have failed. These values (R, H) allow us to use another cylinder shaped protection model

1 for all aircraft which should be free of any other aircraft to fulfil this separation minima (see
 2 figure 3). This volume will be called the “conflict cylinder” as it is considered that two
 3 aircraft potentially violating these separations are exposed to risk.



4
 5 **Figure 2.** Collision cylinder definition

6 During the en route phase of flight, for example, the conflict cylinder would be 5 nm in radius
 7 and 2,000 ft in height. However, these current minimum separation standards were
 8 determined many years ago and the method by which they were calculated is not well
 9 documented. Recently, Reynolds & Hansman [42] identified factors involved in defining the
 10 aircraft separation standards and discussed the importance of accurate state information for
 11 controllers in maintaining them. Ennis & Zhao [43] examined the physical compositions of the
 12 protected zone and presented a formal approach to the analysis of minimum separation
 13 standards.



14
 15 **Figure 3.** Conflict cylinder definition.

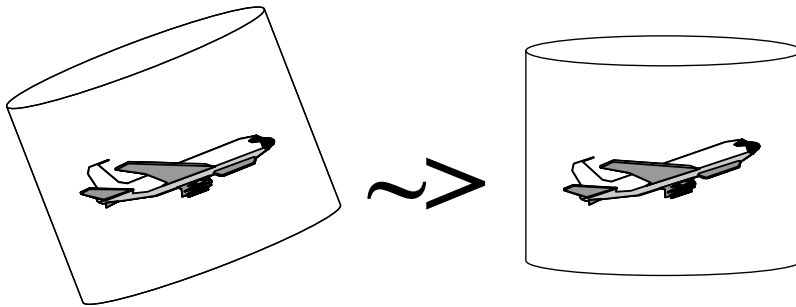
16 A summary of the modelling cylinders defined so far is presented in the following
 17 table.

1 When civil aircraft are climbing or descending, it is considered that pitch angles are small
 2 and so, vertical and horizontal dimensions have small changes. Therefore, all the “modelling
 3 cylinders” will be considered as horizontal, as indicated on figure 4.

4 As all the cylinders are considered parallel, the longitudes and surfaces ratios among them
 5 will be constant when they are projected onto any plane.
 6

Cylinder	Diameter	Height
Aircraft representation	λ_{xy}	λ_z
Collision	$2 \lambda_{xy}$	$2 \lambda_z$
Conflict	2R	2H

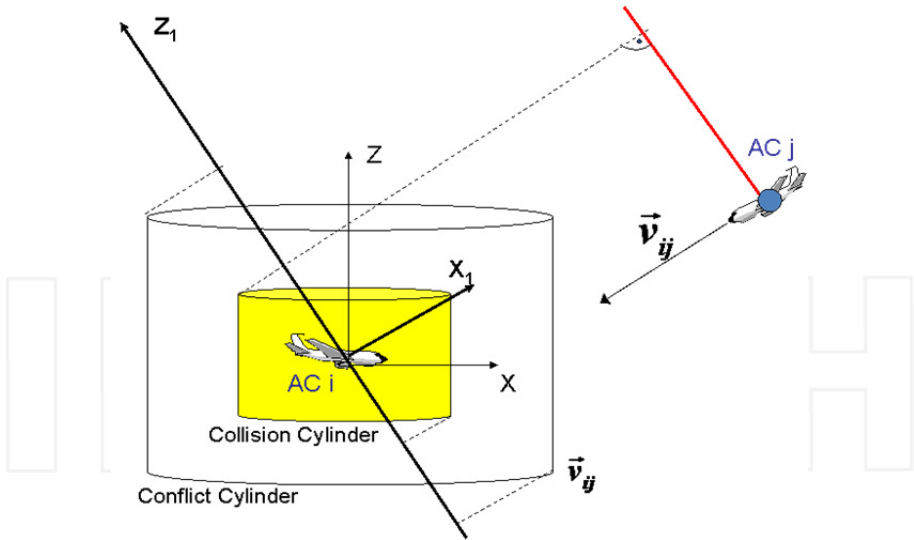
7 **Table 1.** Modelling cylinders definition.
 8
 9



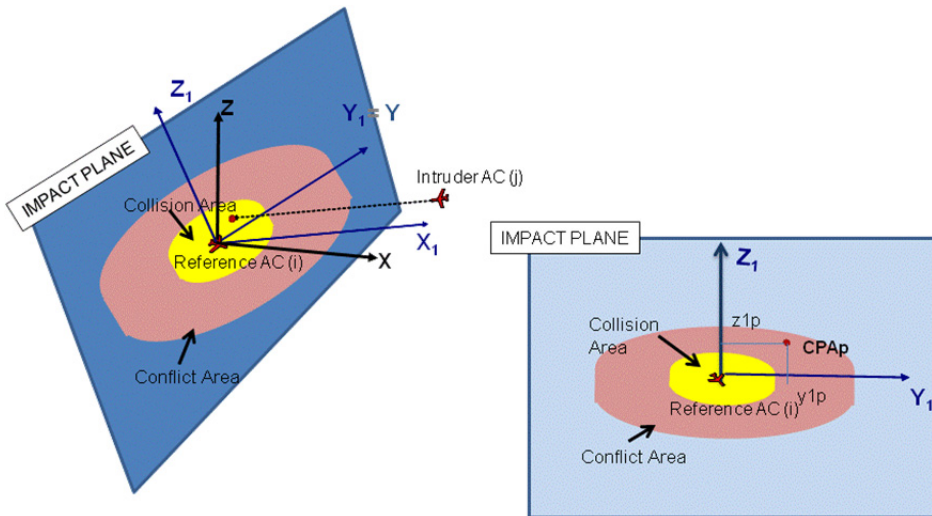
10
 11 **Figure 4.** Modelling Cylinders Orientation

12 **3. Derivation of a general expression for probability of** 13 **collision (Pa)**

14 In order to obtain a general expression of Pa an impact plane is defined as a generic
 15 projection plane containing the centre of reference aircraft AC_i (assumed as static) and
 16 perpendicular to \vec{v}_{ji} (relative velocity vector between the two aircraft i and j involved in the
 17 proximity event). Additionally, the collision area is defined as the projection, over the
 18 impact plane, of the collision cylinder ($2 \lambda_{xy}, 2 \lambda_z$). If the conflict cylinder is settled in AC_i,
 19 where its centroid is the one of the cylinder as well, the conflict area could also be defined as
 20 the projection of the conflict cylinder (2R, 2H). The CPAP (Closest Point Of Approach
 21 Projection) is a point with coordinates y_{1p} and z_{1p} obtained by projecting intruder aircraft.
 22 Figure 5 shows that a conflict will occur if AC_j encounters the stationary conflict area, that is,
 23 if the CPAP coordinates (y_{1p}, z_{1p}) are inside the conflict area. In the same way, a collision
 24 will occur if AC_j encounters the stationary collision area, that is, if the CPAP coordinates are
 25 inside the collision area.



1
2 **Figure 5.** Impact Plane ,Conflict and Collision cylinder.



3
4 **Figure 6.** Impact Plane, Collision Area, Conflict Area and Projected CPA definition.

5 Considering the changes in the CPA coordinates due to radar and radar data segmentation
6 errors, the probability of potential collision for an intruder aircraft that has violated the
7 separation standards and whose projection consequently hits within the conflict area can be
8 calculated as:

9

$$P_a(y_{1p}, z_{1p}) = \int_{S_{PCF}} dP_1 P_2 \approx S_{PCOL} \cdot \int_{S_{PCF}} f_1(y'_{1p} - y_{1p}, z'_{1p} - z_{1p}) \cdot f_2(-y'_{1p} - z'_{1p}) dy'_1 dz'_1 \quad (3)$$

1 This equation provides an individual probability of collision based on:

- 2 • geometry and kinematics of the encounter (S_{PCOL}),
 3 • the predicted minimum lateral separation at the CPA (y_{1p}), and
 4 • the predicted minimum vertical separation at the CPA (z_{1p}).

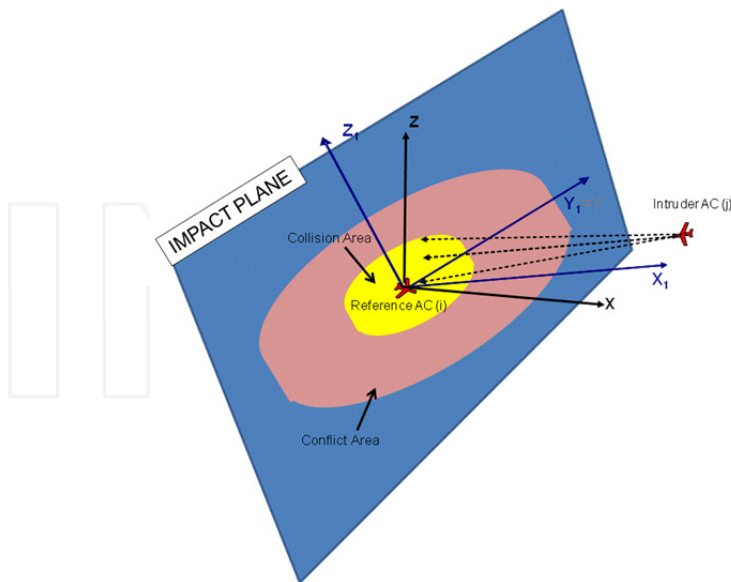
5 This takes into consideration the two probability density functions stating segmentation
 6 lateral and vertical errors and the projection lateral and vertical errors characterization.

7 As a result, the bi-dimensional probability density function of the CPAs can be derived
 8 from previous equation as:

$$9 \quad f_a(y_{1p}, z_{1p}) = \int_{S_{PCF}} f_1(y'_{1p} - y_{1p}, z'_{1p} - z_{1p}) f_2(-y'_{1p} - z'_{1p}) dy'_1 dz'_1 \quad (4)$$

10 Where:

- 11 • f_a is the bi-dimensional probability density function of the CPAs,
 12 • y_{1p} is the minimum predicted lateral separation at the CPA,
 13 • z_{1p} is the minimum predicted vertical separation at the CPA,
 14 • S_{PCF} is the conflict area
 15 • $f_2(y_1, z_1)$ is the probability density function, representing the distribution of y_{1p} and z_{1p}
 16 coordinates errors due to the errors in the segmentation process, and
 17 • $f_1(y'_{1p}, z'_{1p})$ is the statistically determined bi-dimensional probability density function
 18 (pdf) of the CPA $'_p$ coordinates (y'_{1p}, z'_{1p}) for each projected segment associated to an
 19 individual encounter.



20

21 **Figure 7.** Changes in the CPA coordinates due to projecting errors..

1 Both expressions estimate the probability of potential collision, having a potential separation
 2 violation (potential conflict), for each aircraft encounter, provided that uncertainties in the
 3 projection of segmented trajectories and in the segmentation process have been
 4 characterised by associated pdfs, f_1 and f_2 , respectively.

5 **4. Results and discussion**

6 The previous mathematical formulation is supported by the previously mentioned ad-hoc
 7 software, which has been developed by the authors for Eurocontrol in the framework of
 8 the 3D-CRM programme. This software is intended to measure the collision risk in high
 9 density ATC en route airspace, based on an analysis of the stored aircraft tracks that have
 10 flown in it within a given time frame.

11 With the purpose of evaluating the mathematical expressions to estimate the probability of
 12 collisions, the previously mentioned software tool has been applied to a radar data sample from
 13 the Maastricht Upper Area Control Centre (MUAC). EUROCONTROL's Maastricht Upper Area
 14 Control Centre (MUAC) is a regional air traffic control centre providing seamless air navigation
 15 services in the upper airspace (above 24,500ft) for a large (approximately 700,000 square
 16 kilometres) multinational airspace in Europe. An advanced and complex ATC automated system
 17 named MADAP (Maastricht Automated Data Processing and Display System) is the technical
 18 enabler responsible for managing, processing and presenting in real time information relating to
 19 the air traffic flows in the whole area. MADAP performs centralized multi-radar tracking using
 20 the information provided by a large number of radars and computes a high quality air traffic
 21 situation. In MUAC, a unique horizontal separation standard of 5 NM is used throughout the
 22 total area of responsibility. The vertical separation minimum of 1000 ft. is used.

23 **4.1. Empirical estimation for P_a**

24 The general expression of expected P_a is calculated numerically from the relative frequency
 25 of potential collisions among all potential conflicts using the following equation:

$$26 \quad E[P(\text{pot. coll} / \text{pot. conf})] = E[P_a] \approx \frac{\text{Num. of pot. collisions}}{\text{Num. of pot. conflicts}} = \frac{19}{35166} = 5.4 * 10^{-4} \quad (5)$$

27 Figure 8 illustrates the obtained bi-dimensional histogram of the projected horizontal and
 28 vertical separations at the CPA for the whole data period analysed. As it is shown, the
 29 number of potential conflicts are higher when encounters are between aircraft established at
 30 the same flight level (0ft vertical separation) and, as well, between aircraft having 2.5 and
 31 5NM of lateral separation. It could also be noticed that the number of encounters having
 32 1000ft separation is higher than for any other vertical separation except the 0ft. This is easily
 33 understood when taking into account that within the en-route airspace most of the time
 34 aircraft are in level flight (namely always 1000ft apart between contiguous flight levels). If
 35 safety barriers have not been applied the number of collisions to happen would have been
 36 19. The area used to compute the number of potential collisions is shown circled by a red
 37 dotted circle.

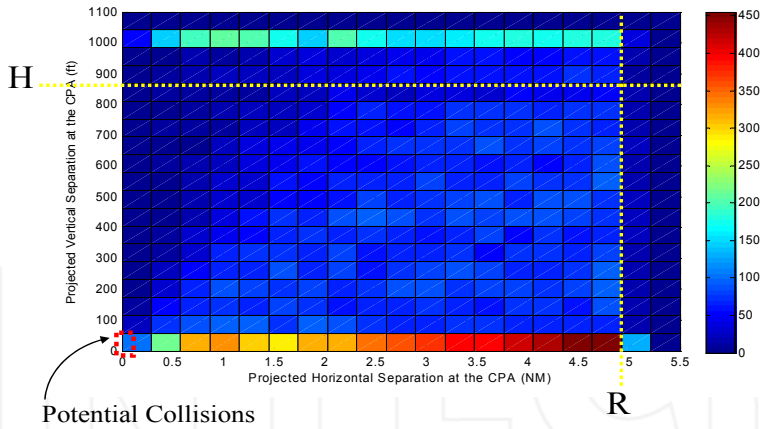


Figure 8. 2D histogram of projected horizontal and vertical separations at the CPA (31 days of radar data)

4.2. Pa estimation for each aircraft encounter

Once the empirical general or expected value for Pa has been obtained, Pa was estimated for each particular encounter by the next expression.

$$\begin{aligned}
 P_a(y_p, z_p) &= 4\lambda_{xy}\lambda_z \cdot \frac{v_x}{\sqrt{v_x^2 + v_z^2}} \left[1 + \frac{\pi}{4} \cdot \frac{\lambda_{xy}}{\lambda_z} \cdot \frac{v_z}{v_x} \right] \cdot f_2^*(-y_p, -z_p) = \\
 &= 2\lambda_{xy} \cdot f_{2y}(-y_p) \cdot 2\lambda_z \cdot \lambda_{2z}(-z_p) \cdot \frac{v_x}{\sqrt{v_x^2 + v_z^2}} \left[1 + \frac{\pi}{4} \cdot \frac{\lambda_{xy}}{\lambda_z} \cdot \frac{v_z}{v_x} \right]
 \end{aligned} \tag{6}$$

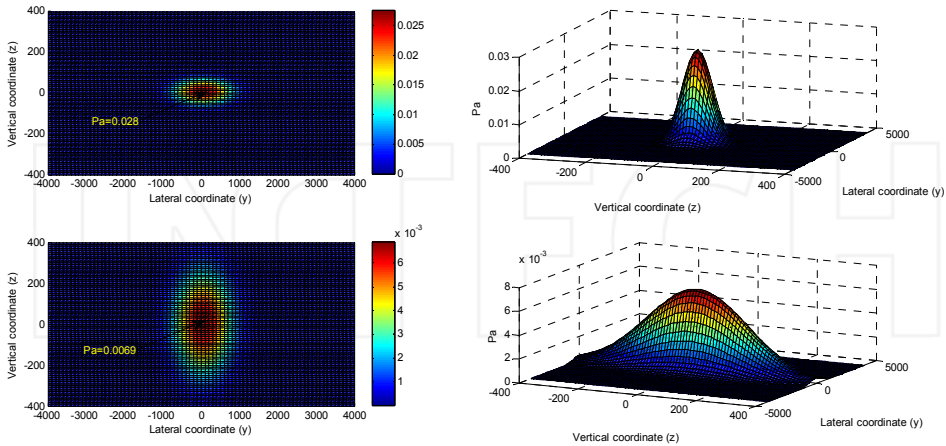
This equation provides an individual probability of collision based on:

- kinematics of the encounter (ratio v_z/v_x),
- the predicted minimum lateral separation at the CPA (y_p), and
- the predicted minimum vertical separation at the CPA (z_p).

It also takes into consideration the segmentation of lateral and vertical errors (f_{2y} and f_{2z}).

A result for Pa estimation for leveled flight encounter is shown in the upper part of figure 8. In this case when CPA coordinates (y_p, z_p) are very close to the reference aircraft (ACi), Pa estimated value reaches $3 \cdot 10^{-2}$. This value has a magnitude of two orders higher than the empirical expected result ($5.4 \cdot 10^{-4}$), but strongly decreases when predicted CPA lays apart from ACi, resulting in values much lower than the empirical one. In the lower part of this figure, the graphs show when one or both aircraft are climbing/descending but having v_z/v_r ratio close to zero, it could be seen that regardless the decrease of the maximum value of Pa ($7 \cdot 10^{-3}$), it is still greater than the empirical expected result for Pa. Furthermore, the probability of collision for CPA for which y_p coordinates close to zero but z_p coordinates

1 separated from the ACi remains significant. Pa estimation for encounters having two
 2 different aircraft climbing/descending (v_z / v_x) ratios is shown in figure 9.



3
 4 **Figure 9.** Pa estimation for different CPAp . Aircraft established at a defined flight level or v_z equals to
 5 zero (upper) and aircraft with v_z close to zero (lower).

6 Despite the fact that the shape of both functions for Pa are similar to the one obtained in the
 7 lower part of figure 10 (aircraft climbing/descending and v_z/v_x close to zero), the maximum
 8 values for Pa are different in both cases ($9 \cdot 10^{-3}$ for $v_z/v_x=0.1$, and $2 \cdot 10^{-2}$ for $v_z/v_x=20$),
 9 showing that Pa maximum values for CPAp close to reference aircraft (ACi) has a
 10 decreasing trend when v_z/v_r ratio increases. The following table summarises the results
 11 obtained from empirical and estimated Pa for the worst case, that is to say Pa for predicted
 12 CPAp=(0,0).

13 The results clearly shows that it is unrealistic to assign the same probability for potential
 14 collisions to all potential conflicts, independently of the predicted coordinates for CPA, no
 15 matter how these coordinates have been derived.

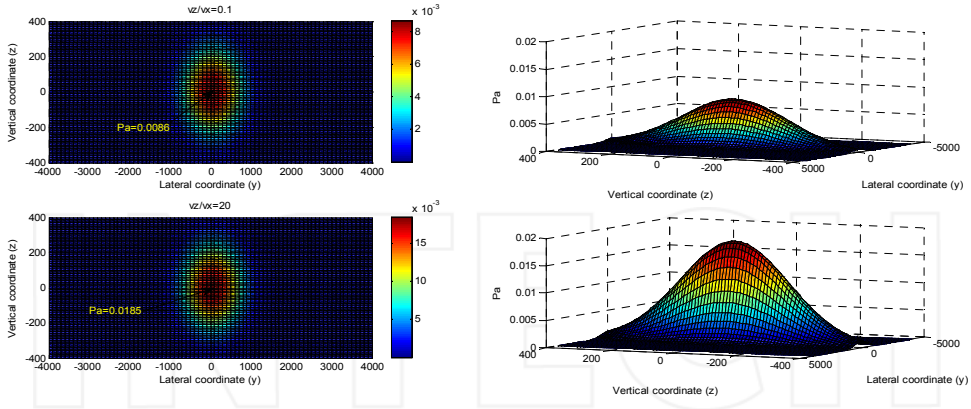
16
 17
 18
 19
 20
 21

Empirical result for expected P_a , $E[P_a]$	$5.4 \cdot 10^{-4}$
Estimated P_a for CPAp=(0,0) and level flight	$3 \cdot 10^{-2}$
Estimated P_a for CPAp=(0,0) and $v_z/v_x \approx 0$	$7 \cdot 10^{-3}$
Estimated P_a for CPAp=(0,0) and $v_z/v_x = 0.1$	$9 \cdot 10^{-3}$
Estimated P_a for CPAp=(0,0) and $v_z/v_x = 20$	$2 \cdot 10^{-2}$

22

23 **Table 2.** Worst case Pa estimation

1



2

3

4 **Figure 10.** Pa estimation for different CPAp . Aircraft climbing/descending and different vz / vx ratios.
 5 vz / vx=0.1(upper), vz / vx=20 (lower)

6 4.3. Expected Pa estimation for a given scenario and traffic sample

7 When a collision risk analysis is applied to a representative aircraft population, using
 8 segmentation of their stored radar tracks, a 2D histogram of projected horizontal and
 9 vertical separations at the CPA can be obtained, as it is shown in figure 8. This histogram
 10 provides a first approach for expected Pa using equation (4), which is the way we used to
 11 obtain $E[Pa] = 5.4 \cdot 10^{-4}$, (this value can taken as reference value for Pa) . If the histogram
 12 exhibits a close to uniform distribution, it can be understood that any “generic” potential
 13 conflict would became a potential collision with the same probability. It is also possible
 14 to propose a different approach to establish the expected value for Pa in a given scenario
 15 and for a given aircraft population, discussed below.

16

$$\begin{aligned}
 E[Pa] &= \frac{1}{N} \sum_{ji} P_a(y_{ji}, z_{ji}, r_{ji}) = \frac{\lambda_{xy} \lambda_z}{N} \sum_{ji} \left[1 + \frac{\pi}{4} \cdot \frac{\lambda_{xy}}{\lambda_z} \cdot r_{ji} \right] f_{2y}(y_{ji}) \cdot f_{2z}(z_{ji}) = \\
 &= \frac{\lambda_{xy} \lambda_z}{N} \sum_{ji} \left[1 + \frac{\pi}{4} \cdot \frac{\lambda_{xy}}{\lambda_z} \cdot r_{ji} \right] f_{2y}(y_{ji}) \cdot f_{2zji}(z_{ji})
 \end{aligned} \tag{7}$$

17 Where $Pa(y_{ji}, z_{ji}, r_{ji})$ is the individual probability of each potential collision where:

- 18 • $r_{ji} = vz/vx$ the between vertical and horizontal relative speeds,
 19 • f_{2zji} the probability density function applied to each aircraft encounter (between each
 20 pair of aircraft, i and j).

21 When this equation is applied to previous MUAC data sample, expected value for Pa results
 22 $8.2 \cdot 10^{-4}$, which is slightly higher than the empirical results.

1 4. Conclusions

2 This chapter analyse in detail the inherent collision risk involved for each aircraft proximity
3 event by assessing the conditional probability P_a of a potential collision between aircraft
4 that are exposed to risk, that is to say, they are potentially going to violate the separation
5 standards defined for a specific airspace if no corrective action is taken. The proposed
6 approach allows the determination of the severity of each aircraft encounter as the
7 probability of potential collision for each individual aircraft encounter in high density ATC
8 en route airspace, based on an analysis of the stored aircraft tracks that have flown within a
9 given time frame. The authors propose a mathematical formulation to characterise the
10 severity of each aircraft proximity event using the convolution of the bi-dimensional
11 probability density function of the predicted Closest Point of Approach between the aircraft
12 involved and the distribution of lateral and vertical error in the projected position of the
13 aircraft. The presented work aims to provide an individual probability of collision based on
14 the geometry and kinematics of the encounter and the minimum lateral separation and the
15 minimum vertical separation at the predicted Closest Point of Approach or CPA. The
16 formula takes into consideration uncertainties introduced by the radar data error and the
17 segmentation error. The results of this chapter shows that there is not the same severity for
18 all the proximity events on which aircraft pass closer than the prescribed horizontal and
19 vertical separation minima, and also that the expected severity for given a scenario and
20 traffic sample can also vary depending on the kinematic characteristics of aircraft involved
21 within this scenario. It is also considered that collision risk for high density of air traffic can
22 be analysed from the estimation of three different factors:

- 23 • Relative frequency of exposition to risk (FeR). The value of this factor can be easily
24 obtained from any radar data sample and strongly depends on the minimum applied
25 horizontal and vertical separations standard and increases with air traffic density,
- 26 • Expected severity $E(P_a)$. This value can be directly derived from individual
27 probabilities of potential collision (P_a). Furthermore, having individual severities, it
28 also permits additional assessment on safety (hot spots identification, etc.).
- 29 • Expected probability of failure of safety barriers (ATC, TCAS, etc.)

30 As the two first factors can be derived from the stored tracks of the traffic sample, using the
31 software tool developed by the authors [38], further work is now devoted to develop the
32 probability of failure of the ATM safety barriers. Once the probability of failure were stated
33 and validated, it will be possible to estimate the collision risk for individual encounters,
34 scenarios and air traffic samples. Results obtained for MUAC, with data sample used in
35 previous discussion, exhibits a rounded value for frequency of exposition to risk of $FeR=0.3$.
36 Probability of potential collision among encounters exposed to risk, P_a or its expected value
37 $E(P_a)$ for the same sample, oscillates between $8.2 \cdot 10^{-4}$ (expected) and $2 \cdot 10^{-2}$ (worst case).
38 Previous results demand a probability of "safety barrier failure" lower than $0.4 \cdot 10^{-5}$ and
39 $1.7 \cdot 10^{-7}$ respectively, to reach the ATM en route target level of safety of $TLS=10^{-9}$. This last
40 value is normally the one used as TLS. For instance, in reference (Eurocontrol, 2006) mid-air

1 collision given as accident frequency (per flight) is $5.4 \cdot 10^{-9}$, specifying that, among them,
2 the frequency of fatal accident, directly caused by ATC (per flight), is $3.5 \cdot 10^{-9}$.

3 **Author details**

4 R. Arnaldo, F.J. Sáez, E. Garcia and Y. Portillo
5 *Universidad Politecnica de Madrid, Madrid, Spain*

6 **5. References**

- 7 [1] Machol, R. E. (1995): "Thirty Years of Modelling Midair Collisions", *Interfaces* 25: 5
8 September -October 1995 (151-172)
- 9 [2] B. L. Marks (1963) Air traffic control separation standards and collision risk. Royal.
10 Aircraft Establishment Technical Note No. 91, February, 1963
- 11 [3] Reich, P.G. (1964), A theory of safe separation standards for Air Traffic Control,
12 Technical Report 64041, Royal Aircraft Establishment, UK
- 13 [4] Reich, P. G. (1966). Analysis of Long-range Air Traffic Systems: Separation Standards.
14 *Journal of the Institute of Navigation*, (19), 88, 169 and 331 (in three parts).
- 15 [5] Peter Brooker. Longitudinal Collision Risk for ATC Track Systems: A Hazardous Event
16 Model. *Journal of Navigation*, 2006, Vol. 59 No. 1. pag. 55-70.
- 17 [6] ICAO (1988), Review of the General Concept of Separation Panel, 6th meeting, Doc 9536,
18 Volume 1, ICAO, Montreal, December 1988.
- 19 [7] H. D. Sherali C. Smith . Dr. A.A. Trani S. Sale.Q. Chuanwen. Analysis of Aircraft
20 Separations and Collision Risk Modeling. NEXTOR - National Center of Excellence for
21 Aviation Operations Research 1998.
- 22 [8] Burt L , October 2000, 3-D Mathematical Model for ECAC Upper Airspace, Final Report
- 23 [9] Peter Brooker (Cranfield University). Radar Inaccuracies and Mid-Air Collision Risk: Part
24 2 En Route Radar Separation Minima *The Journal of Navigation* (2004).
- 25 [10] Carpenter, Brenda D., MIT, Cambridge, MA; Kuchar, James K., MIT, Cambridge, MA.
26 Probability-based collision alerting logic for closely-spaced parallel approach. AIAA-
27 1997-222 Aerospace Sciences Meeting and Exhibit, 35th, Reno, NV, Jan. 6-9. 1997.
- 28 [11] Kuchar, James K., MIT, Cambridge, MA; Winder, Lee F., MIT, Cambridge. Generalized
29 philosophy of alerting with applications to parallel approach collision prevention. MA
30 AIAA-2001-4052 AIAA Guidance, Navigation, and Control Conference and Exhibit,
31 Montreal, Canada, Aug. 6-9, 2001.
- 32 [12] Lee F. Winder, ; James K. Kuchar. Evaluation of Collision Avoidance Maneuvers for
33 Parallel Approach . *Journal of Guidance, Control, and Dynamics* 0731-5090 vol.22 no.6
34 (801-807)doi: 10.2514/2.4481, 1999
- 35 [13] Powell, J. David, Stanford Univ., CA; Houck, Sharon, Stanford Univ., CA Assessment of
36 the possibility of a midair collision during an ultra closely spaced parallel approach. .
37 AIAA-2001-4205 AIAA Guidance, Navigation, and Control Conference and Exhibit,
38 Montreal, Canada, Aug. 6-9, 2001.

- 1 [14] Sharon W. Houck, J. David Powell, Probability of Midair Collision During Ultra
2 Closely Spaced Parallel Approaches. *Journal of Guidance, Control, and Dynamics*, 0731-
3 5090 vol.26 no.5 (702-710) do: 10.2514/2.5124. 2003.
- 4 [15] Shepherd, Roger, Rannoch Corp., Alexandria, VA; Cassell, Rick. A reduced aircraft
5 separation risk assessment model, VA AIAA-1997-3735 AIAA Guidance, Navigation,
6 and Control Conference, New Orleans, LA, Aug. 11-13, Collection of Technical Papers.
7 Pt. 3 (A97-37001 10-63). 1997.
- 8 [16] Blom, H.A.P., Bakker, G.J., Blanker, P.J.G., Daams, J., Everdij, M.H.C., and Klompstra,
9 M.B. "Accident Risk Assessment for Advanced ATM," In: *Air Transportation Systems
10 Engineering*, G.L. Donohue and A.G. Zellweger (Eds.), AIAA, 2001, pp. 463-480. 2001.
- 11 [17] H. Blom, GJ Bakker, B. Klein Obbink and MB Klompstra. Free Flight safety risk
12 modeling and simulation. *Proceedings of 2nd International Conference on Research in
13 Air Transportation ICRAT 2006*, at Beograd, Serbia, June 24-28, 2006.
- 14 [18] H. Blom,; B. Klein Obbink, B. Bakker, National Aerospace Laboratory NLR. Safety Risk
15 Simulation of an Airborne Self Separation Concept of Operation. AIAA-2007-7729 7th
16 AIAA ATIO Conf, 2nd CEIAT Int'l Conf on Innov and Integr in Aero Sciences, 17th LTA
17 Systems Tech Conf; followed by 2nd TEOS Forum, Belfast, Northern Ireland, Sep. 18-20,
18 2007.
- 19 [19] Peter Brooker. Air Traffic Management accident risk. Part 1: The limits of realistic
20 modeling. *Safety Science* 44, 419-450. 2006.
- 21 [20] Paielli, R.A. and H. Erzberger, "Conflict probability estimation for free flight", *AIAA J.
22 of Guidance, Control and Dynamics*, Vol. 20, pp.588-596. 1997.
- 23 [21] Paielli, R.A. and H. Erzberger, "Conflict Probability Estimation Generalised to Non-
24 Level Flight", *Air Traffic Control Quarterly*, Vol. 7, pp.195-222, 1999.
- 25 [22] Prandini, M., J. Hu, J. Lygeros and S. Sastry, A probabilistic approach to aircraft conflict
26 detection, *IEEE Tr. on Intelligent Transportation Systems*, Vol. 1, No. 4, pp. 199-220.
27 2000.
- 28 [23] M. Prandini, J. Lygeros, A. Nilim, and S. Sastry, "A Probabilistic Framework for Aircraft
29 Conflict Detection", AIAA-99-4144, in *Proc. AIAA Guidance, Navigation, and Control
30 Conf.*, Portland, OR, August 9-11, pp. 1047-1057. 1999.
- 31 [24] ICAO, Annex 11 - Air Traffic Services, 12th edition, incorporating amendments 1-38,
32 July 1998, Green pages, attachment B, paragraph 3.2.1.
- 33 [25] Kuchar, J. and Yang, L., "A Review of Conflict Detection and Resolution Modelling
34 Methods," *IEEE Transactions on Intelligent Transportation Systems*, Vol. 1, No. 4, pp.
35 179-189. December 2000.
- 36 [26] Kuchar and L. Yang, "Survey of Conflict Detection and Resolution Modelling
37 Methods", AIAA-97-3732, in *Proc. AIAA Guidance, Navigation, and Control Conf.*,
38 New Orleans, LA, August 11-13, 1997.
- 39 [27] Henk A.P. Blom, Bart Klein Obbink, G.J. (Bert) Bakker. Safety risk simulation of an
40 airborne self separation concept of operation, 7th AIAA Aviation Technology,
41 Integration and Operations Conference (ATIO) 2nd C 18 - 20, Belfast, Northern
42 Ireland AIAA 2007-7729. September 2007.

- 1 [28] Lee Yang*, Ji Hyun Yang†, James Kuchar‡, Eric Feron§ Massachusetts Institute of
2 Technology, Cambridge, MA. A Real-Time Monte Carlo Implementation for
3 Computing Probability of Conflict. AIAA Guidance, Navigation, and Control
4 Conference and Exhibit 16 - 19, Providence, Rhode Island. August 2004.
- 5 [29] Burt L , October 2000, 3-D Mathematical Model for ECAC Upper Airspace, Final Report.
- 6 [30] Campos L. M. B. C. ; Marques J. M. G. On the probability of collision between climbing
7 and descending aircraft , ; Journal of aircraft ISSN 0021-8669 CODEN JAIRAM / vol.
8 44, no2, pp. 550-557. 2007.
- 9 [31] Campos L. M. B. C.. Probability of collision of aircraft with dissimilar position errors , ;
10 Journal of aircraft ISSN 0021-8669 CODEN JAIRAM , vol. 38, no4, pp. 593-599. 2001.
- 11 [32] Leonard A. Wojcik The MITRE Corporation, McLean, VA 22102 U.S. Probabilistic
12 Aircraft Conflict Analysis for a Vision of the Future Air Traffic Management System.
13 AIAA 5th Aviation, Technology, Integration, and Operations Conference (ATIO) 26 -
14 28, Arlington, Virginia. September 2005.
- 15 [33] Leonard A.Wojcik* The MITRE Corporation, McLean. Probabilistic Aircraft Conflict
16 Analysis for a Future Air Traffic Management System. VA 22102 DOI: 10.2514/1.22850
17 Journal of Aerospace Computing, Information, and Communication Vol. 6, June 2009
- 18 [34] Rachele L. Ennis¹ and Yiyuan J. Zhao² University of Minnesota, Mpls, MN. Defining
19 Appropriate Inter-Aircraft Separation Requirements. AIAA 4th Aviation Technology,
20 Integration and Operations (ATIO) Forum 20 - 22, Chicago, Illinois. September 2004.
- 21 [35] Jerry Dingy Claire Tomlinz. A Dynamic Programming Approach for Aircraft Conflict
22 Detection. AIAA Guidance, Navigation, and Control Conference, 10 - 13, Chicago,
23 Illinois . August 2009.
- 24 [36] D. E. Stepner. Modelling of Aircraft Position Errors with Independent Surveillance.
25 VOL. 11, NO. 9, AIAA Journal 1273. September 1973.
- 26 [27] Eduardo José García González, INECO, Madrid, Spain, Francisco Javier Sáez Nieto,
27 Polytechnic University of Madrid, Madrid, Spain, Maria Isabel Izquierdo,
28 EUROCONTROL, Brussels, Bélgica . Identification and analysis of proximate events in
29 high density en route airspaces Paper N° 63]. 7th USA – EUROPE ATM R&D Seminar
30 July 02-05, Barcelona. 2007
- 31 [38] Saez F, Arnaldo R, Garcia E, McAuley G, Izquierdo M. Development of a three
32 dimensional collision risk model tool to asses safety in high density en-route airspaces.
33 DOI:10.1243/09544100JAERO704
- 34 [39] Jaroslav Krystul.Modelling of stochastic hybrid systems with applications to accident
35 risk assessment. 6 September 2006
- 36 [40] Rachele L. Ennis† and Yiyuan J. Zhao‡ University of Minnesota, Minneapolis,
37 Minnesota. Characterization of Aircraft Protected Zones. AIAA's 3rd Annual Aviation
38 Technology, Integration, and Operations (ATIO) Tech 17 – 19, Denver, Colorado.
39 November 2003,
- 40 [41] J. F. Bellantoni. The Calculation of Aircraft Collision Probabilities DOT-TSC-FAA-71-27,
41 October'1971.
- 42 [42] Reynolds T.G., Hansman R.J., Analysis of Aircraft Separation Minima Using a
43 Surveillance State Vector Approach, MIT, 2001

- 1 [43] Ennis, R. L.; Zhao, Y.J., Defining Appropriate Inter-Aircraft Separation Requirements,
- 2 AIAA's 4th Annual Aviation Technology Integrations and Operations (ATIO) Forum #
- 3 AIAA2004-6203, September 20-22, 2004

INTECH

INTECH

2012-08-01

Probability of potential collision for aircraft encounters in high density airspaces

Arnaldo, R

INTECH

Arnaldo R, Sáez Nieto FJ, Garcia E, Portillo Y, Probability of potential collision for aircraft encounters in high density airspaces, In *Advances in Air Navigation Services*, 2012

<http://dx.doi.org/10.5772/51119>

Downloaded from Cranfield Library Services E-Repository